

TXT (Add New Rearrange, Conditional Area and Pattern)

Alex Pearce - 2024-03-18 - Comments (0) - Lاسernet Form Editor 9 - XLS, CSV and TXT Input

Lاسernet

Doing the current exercise, you are proposed to add a new rearrange and a new pattern, as well as define a conditional area to the input of the TXT format.

The **Rearrange** tool is one of the most important functions in Lاسernet Form Editor. It is used to define variables in the input data files and map them to the output form fields.

Using the **Conditional Area** function, it is possible to define areas in the input files to include them to the print when certain conditions are satisfied. This can be used to recognize invoice or order lines in the corresponding documents.

Patterns are used within conditional areas to recognize specific line items. For example, a pattern is used to identify various data elements contained in an invoice or order line.

Exercise

Download and import the attached configuration called **04. TXT (Add New Rearrange, Conditional Area and Pattern)** in Lاسernet Developer 9. Afterwards, go to the **Forms** section and open the **Sample** form.

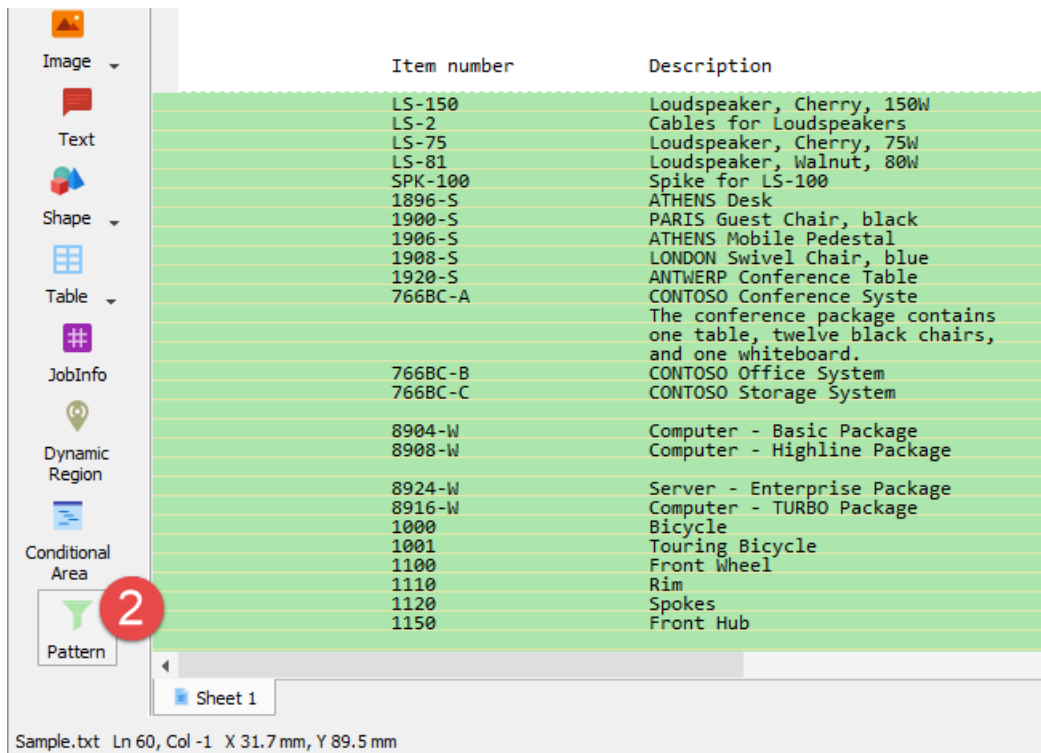
Once you are done, follow the steps listed below:

1. Add a conditional area. To this end, click the **Conditional Area** tool on the Developer toolbar. When a pointer becomes a cross, mark the desired area of the input data file.

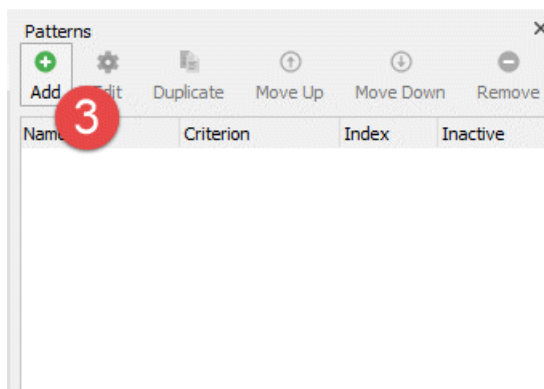
At the mouse release, the conditional area is added and highlighted in the input.

Continue with adding patterns to the conditional area. Patterns are used within conditional areas to recognize specific line items. For example, you are proposed to add a pattern to identify elements containing invoice items. To this end, follow the steps listed below.

2. On the Developer toolbar, click **Pattern**.



3. In the **Pattern** mode, a panel is shown on the right-hand side. Click the **Add** button to add a pattern.



4. Open the pattern for editing. To this end, select a pattern, and then click the **Edit** button. Otherwise, right-click the selected pattern, and then click **Edit** on the context menu that appears, or just double-click the pattern.

5. In the **Pattern Properties** dialog, type a new name (Pattern 1) for the pattern, and then click **OK** to save changes and close the dialog.

6. Click **Line Criterion** to set a criterion for the pattern you have just added.

7. Once a pointer becomes a cross, draw a rectangle around the first element in the **Unit price** column, taking 1 symbol before a decimal separator and 2 symbols after it.

8. At the mouse release, the **Pattern Criterion** dialog opens.

9. In the **Match** field, type **9,99**, where each 9 indicates a number from 0-9. It is a wildcard.

8 Pattern Criterion

Row: 1 Start col: 141 End col: 144

Match: **9,99** **9**

☐ Regular expression

☒ Case sensitive

Ok Cancel

As a result, you can see only lines containing invoice items are highlighted in green in the input.

Sample - Lasernet Form Editor 9

File Edit Form Sheet Tools View Help

Save Preview Cut Copy Paste Undo Redo Styles Format Painter Guides

Sample.txt x

Select

Line Criterion

Back

Item number	Description	Posted Shipment Date	Quantity
LS-150	Loudspeaker, Cherry, 150W	19-01-18	1
LS-2	Cables for Loudspeakers	19-01-18	10
LS-75	Loudspeaker, Cherry, 75W	19-01-18	1
LS-81	Loudspeaker, Walnut, 80W	19-01-18	1
SPK-100	Spike for LS-100	19-01-18	160
1896-S	ATHENS Desk	19-01-18	10
1900-S	PARIS Guest Chair, black	19-01-18	1
1906-S	ATHENS Mobile Pedestal	19-01-18	1
1908-S	LONDON Swivel Chair, blue	19-01-18	1
1920-S	ANTWERP Conference Table	19-01-18	1
766BC-A	CONTOSO Conference System	19-01-18	5
The conference package contains one table, twelve black chairs, and one whiteboard.			
766BC-B	CONTOSO Office System	19-01-18	1
766BC-C	CONTOSO Storage System	19-01-18	1
8904-W	Computer - Basic Package	19-01-18	2
8908-W	Computer - Highline Package	19-01-18	2
8924-W	Server - Enterprise Package	19-01-18	5
8916-W	Computer - TURBO Package	19-01-18	3
1000	Bicycle	19-01-18	2
1001	Touring Bicycle	19-01-18	2
1100	Front Wheel	19-01-18	2
1110	Rim	19-01-18	2
1120	Spokes	19-01-18	2
1150	Front Hub	19-01-18	2
1151	Axle Front wheel	19-01-18	1
1155	Socket Front	19-01-18	1
1160	Tire	19-01-18	1
1170	Tube	19-01-18	10
1200	Back Wheel	19-01-18	1
1250	Back Hub	19-01-18	1
1251	Axle Back Wheel	19-01-18	1
1255	Socket Back	19-01-18	1
1300	Chain Assy	19-01-18	2

Sheet 1

Sample.txt Ln 28, Col 113 X: 6.0 mm, Y: 27.0 mm

Patterns

Add Edit Duplicate Move Up Move Down Remove

Name	Criterion	Index	Inactive
Pattern 2	No criteria	1	
Pattern 1	A=9,99 [A]	2	

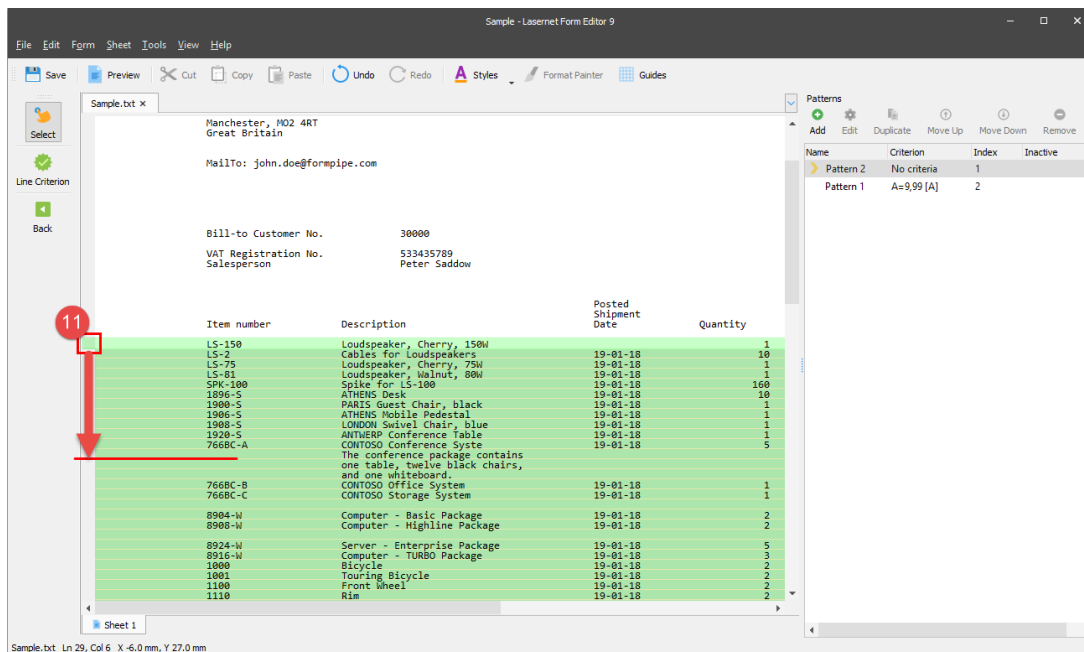
10. On the **Pattern** panel, add one more pattern with the **Pattern 2** name.

Patterns

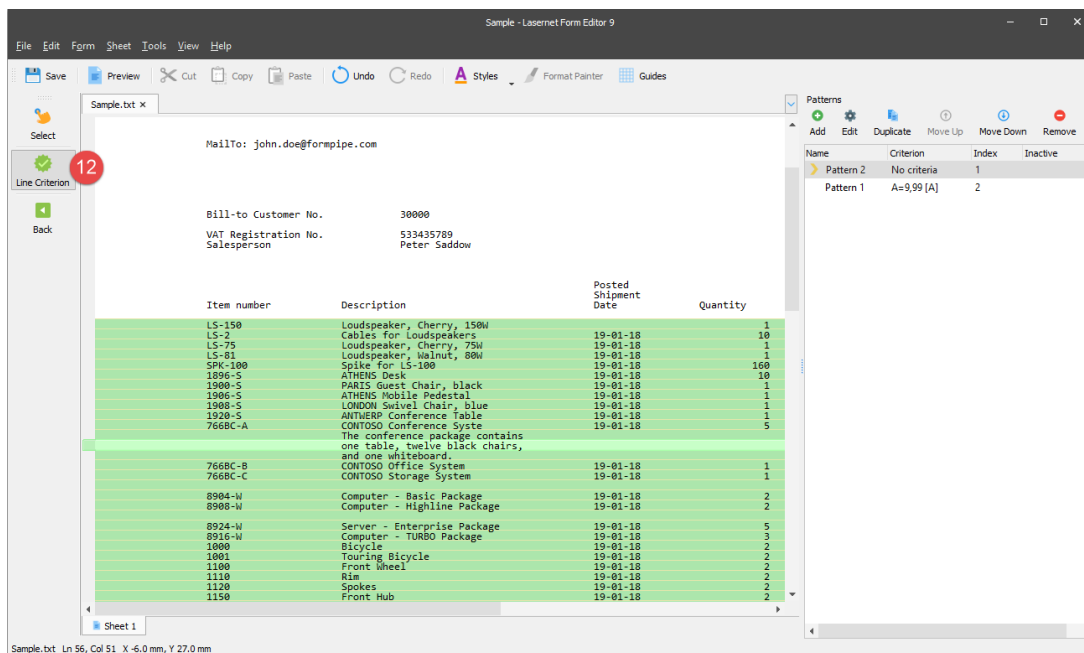
Add Edit Duplicate Move Up Move Down Remove

Name	Criterion	Index	Inactive
Pattern 2	No criteria	1	
Pattern 1	A=9,99 [A]	2	

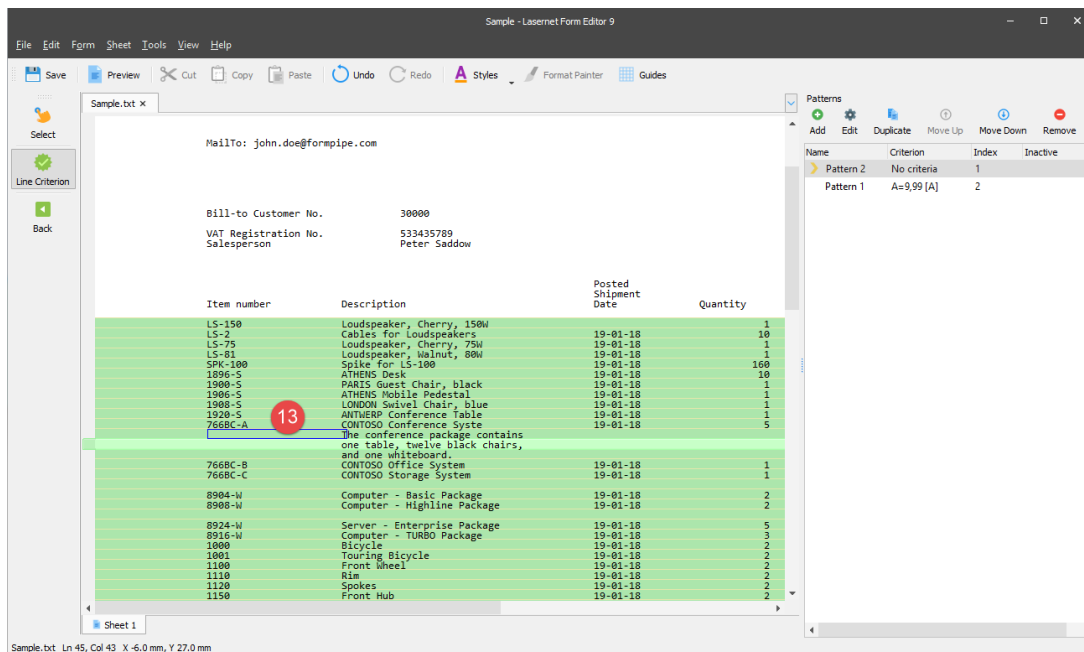
11. On the left side of the input, click a light green pattern marker. The pattern marker is used as a guideline while defining a pattern. Drag the marker till the second line which does not contain invoice items, so you can include the first empty line to the selected area.



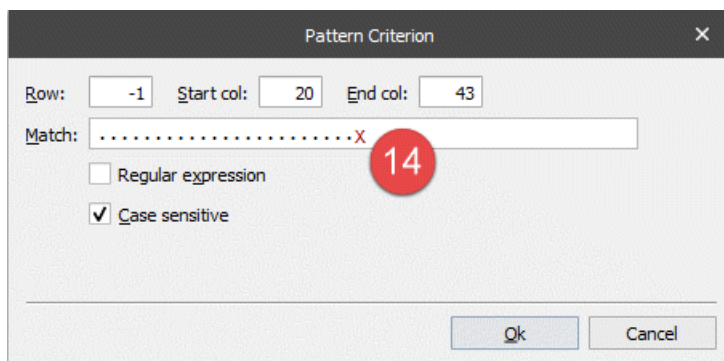
12. Click **Line Criterion**.



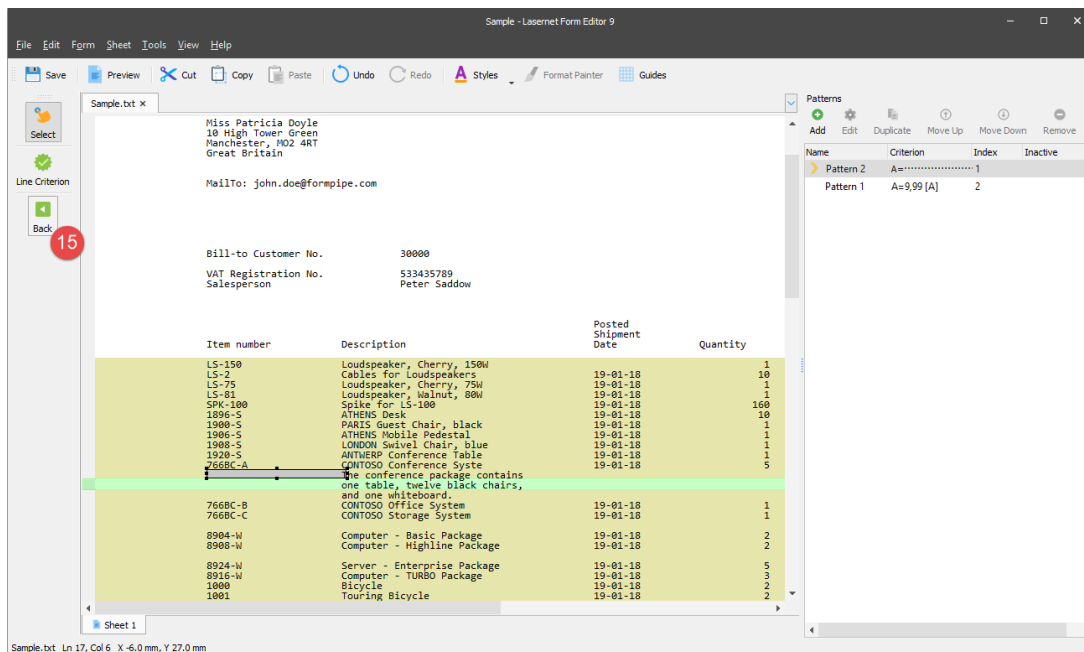
13. Once a pointer becomes a cross, draw a rectangle around the first empty elements in the line, including the 1st symbol of the 1st word.



14. At the mouse release, the **Pattern Criterion** dialog opens. In the **Match** field, type **X** after space symbols, where X indicates a letter, not numbers and spaces. It is also a wildcard.



15. Once you are done adding and editing patterns, click the **Back** button to exit the **Pattern** mode.



It is the right time now to add rearranges: both absolute and conditional. The latter is added to the pattern.

16. On the Developer toolbar, click **Rearrange**.

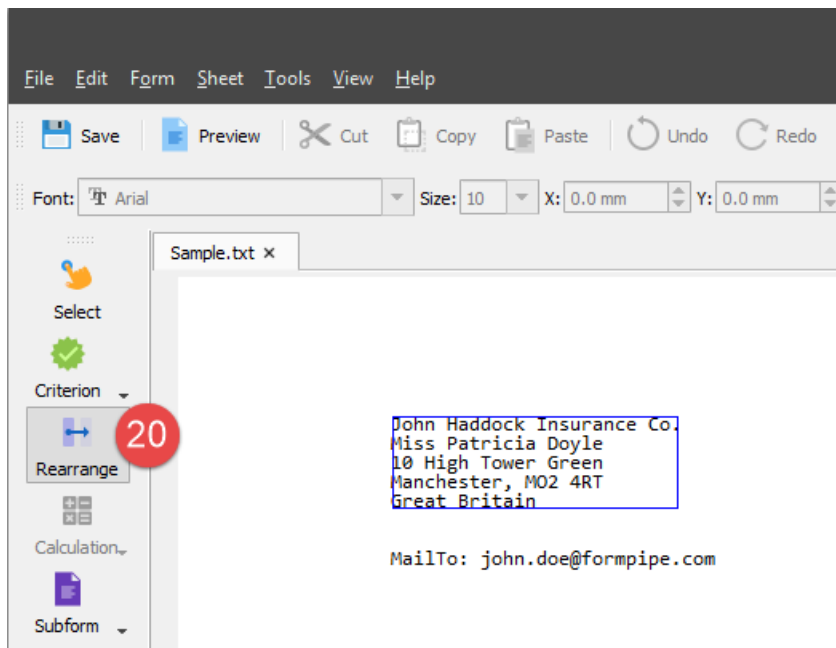
17. Once a pointer becomes a cross, draw a rectangle around the first element in the **Item number** column.

18. At the mouse release, all the elements of the **Item number** column are selected within the pattern. Click the selection. As a result, the rearrange is shown in the output.

19. Set the **X** position of the rearrange added to the output to **15 mm**. To this end, open the **Edit Rearrange** dialog on the **Position** tab. Otherwise, you can drag the rearrange to the required position.

Afterwards, add more rearranges (Description, Quantity, Unit price and Amount) belonging to the same pattern, and locate them in the output as shown on the picture below.

20. On the Developer toolbar, click **Rearrange**. Once a pointer becomes a cross, draw a rectangle around the first five lines in the input as it is shown on the picture below.



As you can see, lines do not belong to any pattern meaning you are adding an absolute rearrange. At the mouse release, the rearrange is added to the output.

21. Open the **Edit Rearrange** dialog on the **Position** tab, and set the position properties as shown on the picture below.

Edit Rearrange

General Objects Criteria Fonts Formats **Position** Border

Absolute

☒ First ☐ Middle ☐ Last ☒ Single

Position

Size type: Auto XY

X: 15.0 mm Y: 20.0 mm

Width: 45.4 mm Height: 20.0 mm

Rotation: 0 °

Relative

Relative to: Top of page

Box horizontal alignment

☒ Left ☐ Center ☐ Right

Box vertical alignment

☒ Top ☐ Middle ☐ Bottom

Text horizontal alignment

☒ Left ☐ Center ☐ Right ☐ Justified

Text vertical alignment

☒ Top ☐ Middle ☐ Bottom

Line height

☐ Absolute 10.0 mm

☒ Relative 100 %

☐ Use empty line height 4.0 mm

Overflow

☐ Force line break

☒ Overflow

☐ Truncate

☐ No word wrapping

Whitespace on edges

Before After

Trim ☒ ☒

Pad ☐ ☐

Keep ☐ ☐

Ok Cancel Preview

You have used the input of the TXT format to define a conditional area, add 2 patterns to it as well as several conditional rearranges belonging to a pattern. In addition, you have added an absolute rearrange and defined an absolute and X-Y positions for it. As a result, your output looks as follows:

Attachments

- [04.-TXT-Add-New-Rearrange-Conditional-Area-and-Pattern.Inconfigr \(54.31 KB\)](#)