

## TXT (Add New Form with Criteria)

Alex Pearce - 2024-03-18 - Comments (0) - Lاسernet Form Editor 9 - XLS, CSV and TXT Input

# Lاسernet

In this exercise, you can learn how to add a new TXT form. You are also proposed to set up a criterion to recognize the form.

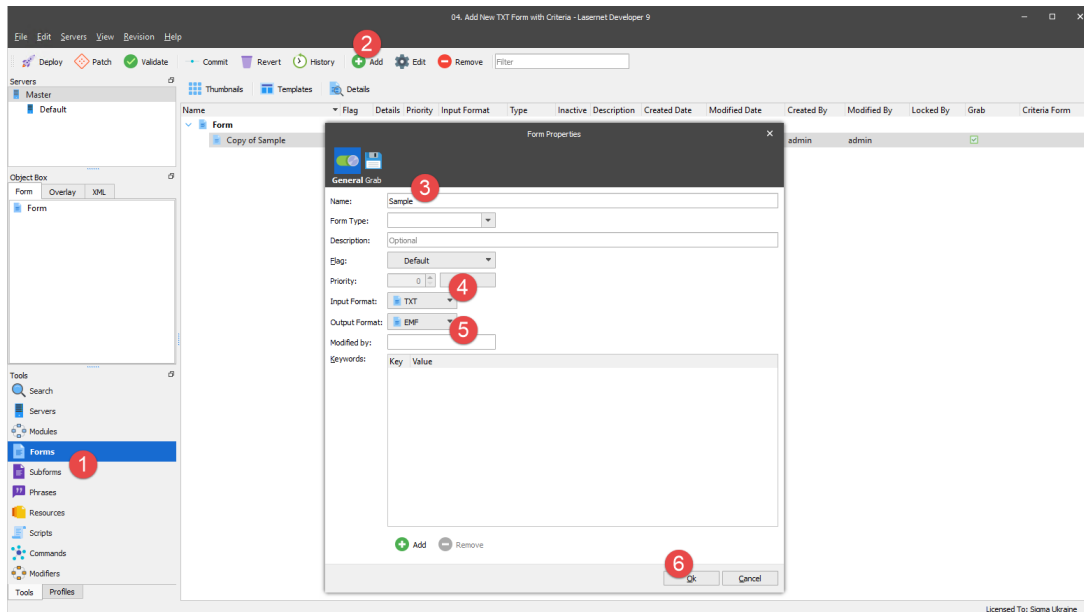
The form criterion is used by the Form Engine to look for the key data in specific locations in the input data and recognize a form in the form list.

**Note:** If no criteria are specified for a form, such a form is not processed.

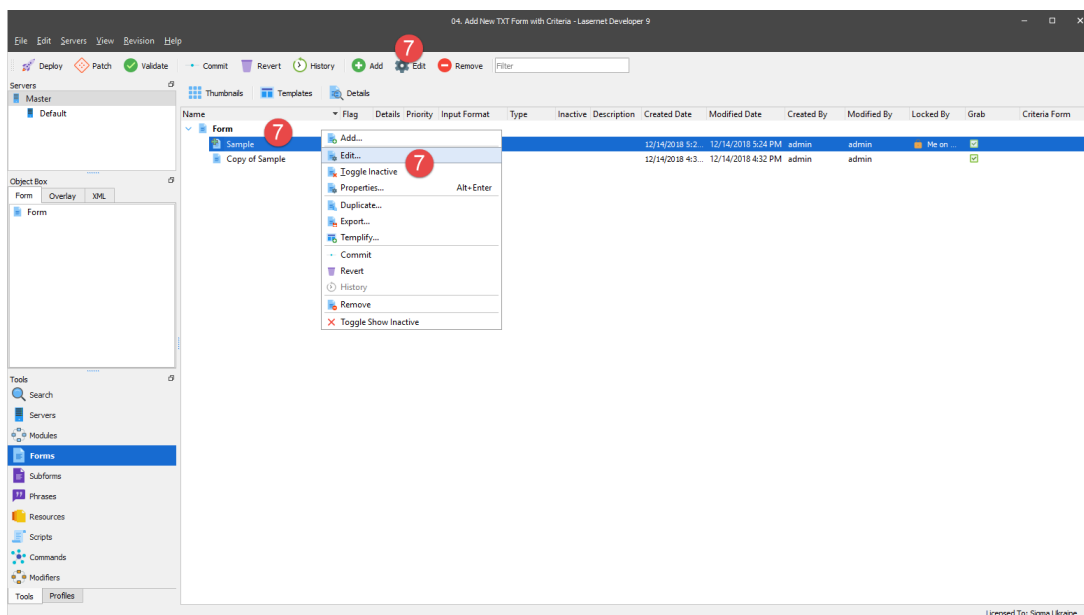
### Exercise

Download and import the attached configuration called **03. TXT (Add New Form with Criteria)** in **Lاسernet Developer 9**. Afterwards, follow the steps listed below:

1. On the **Tools** panel, click **Forms** to open a form area.
2. Click the **Add** button on the top toolbar. Otherwise, you can drag the **Form** item to the form area. As one more alternative, you can right-click in the form area, and then click **Add** in the context menu that appears.
3. Enter a name of the new form (Sample) in the **Name** field.
4. Select **TXT** as an input format.
5. Select **EMF** as an output format.
6. Once you are done, click **Ok** to confirm changes.

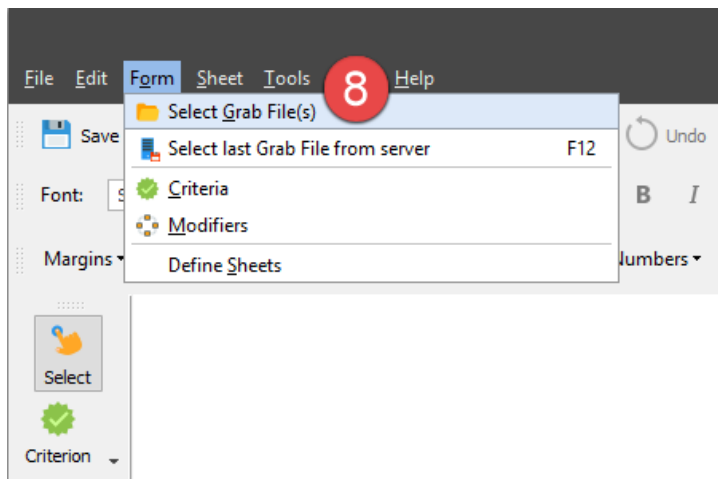


7. Open the **Sample** form you have just added for editing. To this end, select it, and then click the **Edit** button on the toolbar. Otherwise, you can right-click the form, and then select **Edit** on the context menu that appears, or just double-click the form.

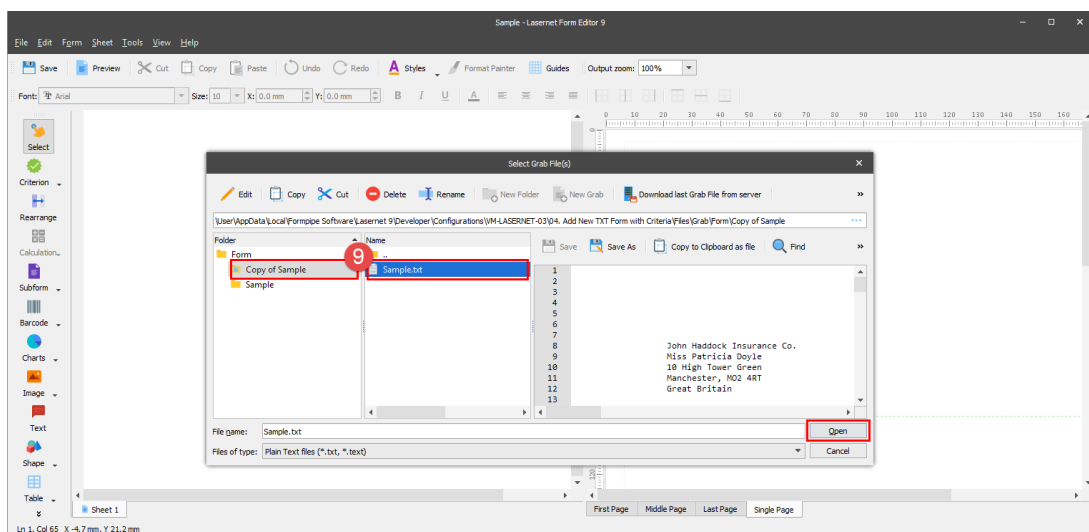


Before you can set up a new form, a you are to open a grab file which shows in the input window of **Lasernet Form Editor**. A grab file contains the output data as delivered from the application for which you want to create a report.

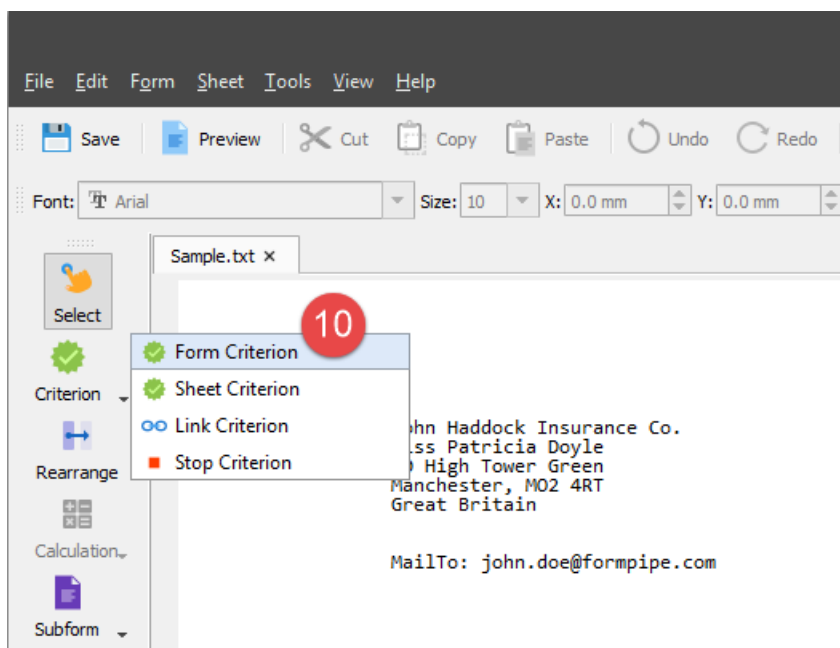
8. On the **Form** menu, click **Select Grab File(s)**.



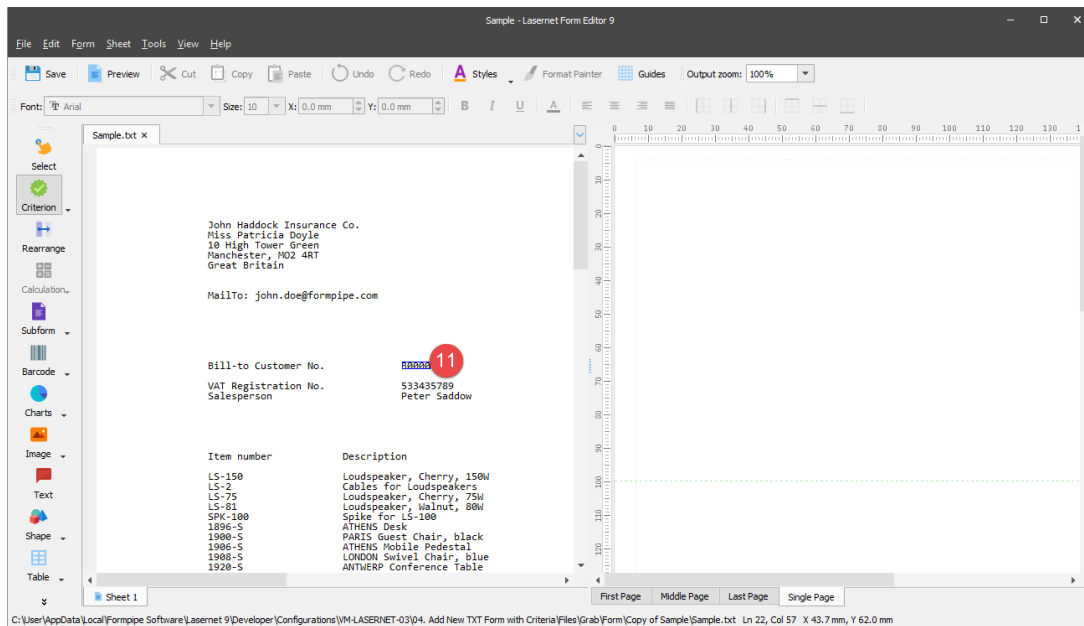
9. In the **Select Grab File(s)** dialog that opens, select the **Copy of Sample** folder, then select the **Sample** file, and then click **Open**.



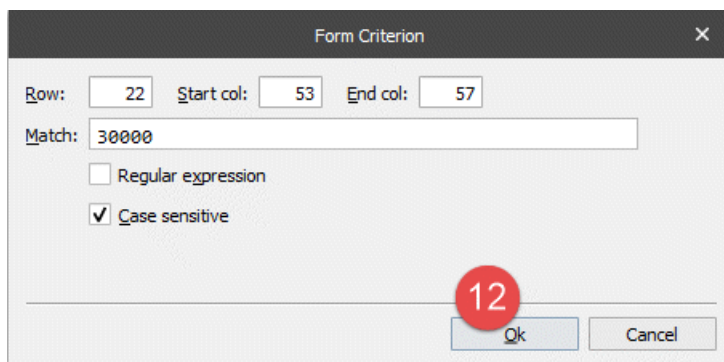
10. On the Developer toolbar, click **Criterion**, and then click **Form Criterion**.



11. Move the cursor to the **30000** item in the input and select it.



12. Once you release a mouse button, the **Form Criterion** dialog opens. Accept the settings for the selected item by clicking **Ok** twice.



As a result, the input view shows an object which is dark-grey highlighted illustrating that the form contains a criterion to recognize the XML data.

Sample.txt x

John Haddock Insurance Co.  
Miss Patricia Doyle  
10 High Tower Green  
Manchester, M02 4RT  
Great Britain

MailTo: john.doe@formpipe.com

Bill-to Customer No. 30000

VAT Registration No. 533435789  
Salesperson Peter Sadow

Item number	Description
LS-150	Loudspeaker, Cherry, 150W
LS-2	Cables for Loudspeakers
LS-75	Loudspeaker, Cherry, 75W
LS-81	Loudspeaker, Walnut, 80W
SPK-100	Spike for LS-100
1896-S	ATHENS Desk
1900-S	PARIS Guest Chair, black
1906-S	ATHENS Mobile Pedestal
1908-S	LONDON Swivel Chair, blue
1920-S	ANTWERP Conference Table

Sheet 1

## Attachments

- [03.-TXT-Add-New-Form-with-Criteria.Inconfigx \(16.62 KB\)](#)