

## Tables (End of Cond. Area)

Alex Pearce - 2024-03-18 - Comments (0) - Lasetnet Form Editor 9 - Designing Forms

# Lasetnet

In the table settings, you can use the **Relative to** and **Vertical lines to** options to manage the table style as well as a position of headers and footer relative to the body.

### Exercise

Download and import the attached configuration called **22. Tables (End of Cond. Area)** in **Lasetnet Developer 9**. Afterwards, go to the **Forms** section and open the **Sample** form.

1. In the output, switch to the **Last Page** tab.
2. Right-click the table and open the **Table Properties** dialog.

0 10 20 30 40 50 60 70 80 90 100 110 120 130 140 150 160 170 180 190 200

0 10 20 30 40 50 60 70 80 90 100 110 120 130 140 150 160 170 180 190 200 210 220 230 240 250 260 270 280 290

# Lasernet by Formpipe

**Sparrow Wholesales**  
123 Purple Road  
Arvada, CO 80005  
United States of America

**Sample**  
Number.....: 123456  
Date.....: 20-11-2014  
Account.....: 1201  
Reference.....: John Doe  
Page.....: [Page X of Y:%1 / %2]

Article	Description	Quantity	Price	Amount
80211	Transfer from previous page Quietkey Keyboard			[scrip] 145,00
80220	Screw on Mount CD/Tape Driv			2.500,00
1898-S	ATHENS Desk			618,93
1900-S	PARIS Guest Chair, black			118,84
	Freight			1.889,20

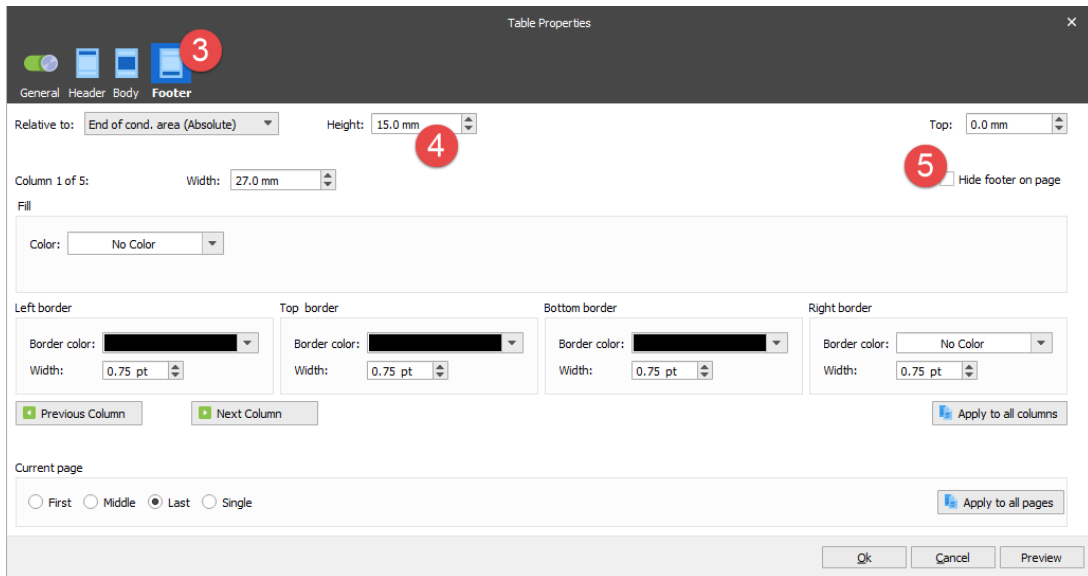
**Table Properties** 2

- Paste
- General
- Criteria
- Combining
- Destinations
- Pre JobInfos
- Post JobInfos
- Modifiers
- Format
- Printer Profiles
- Overlay Files
- Page Setup
- Master Sheet
- Advanced
- Conditional Area
- Delete Table
- Lock

1

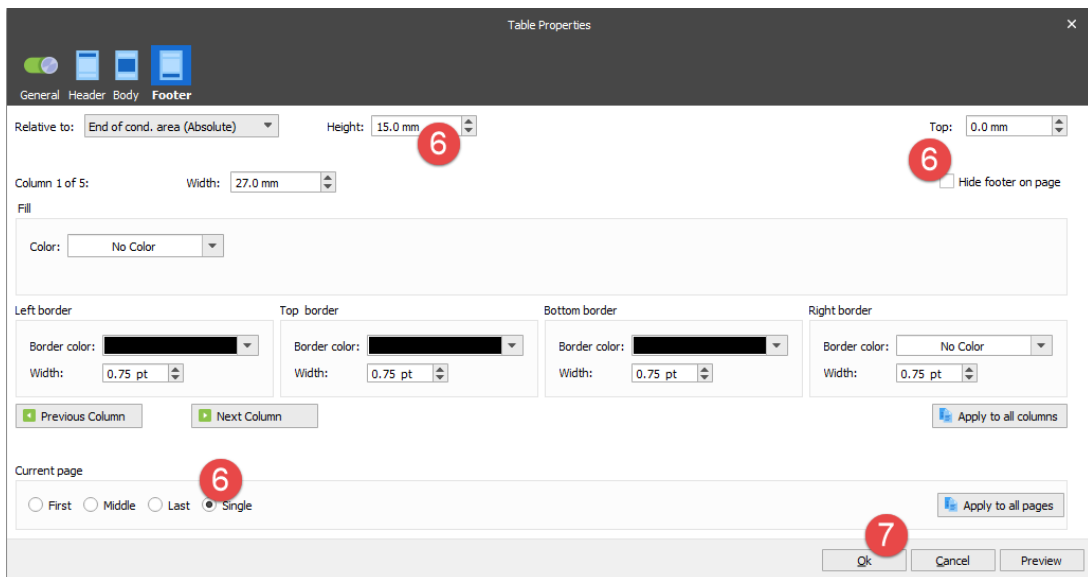
First Page Middle Page Last Page Single Page

3. Switch to the **Footer** tab.
4. Set **Height** to **15 mm**.
5. Clear the **Hide footer on page** check box.

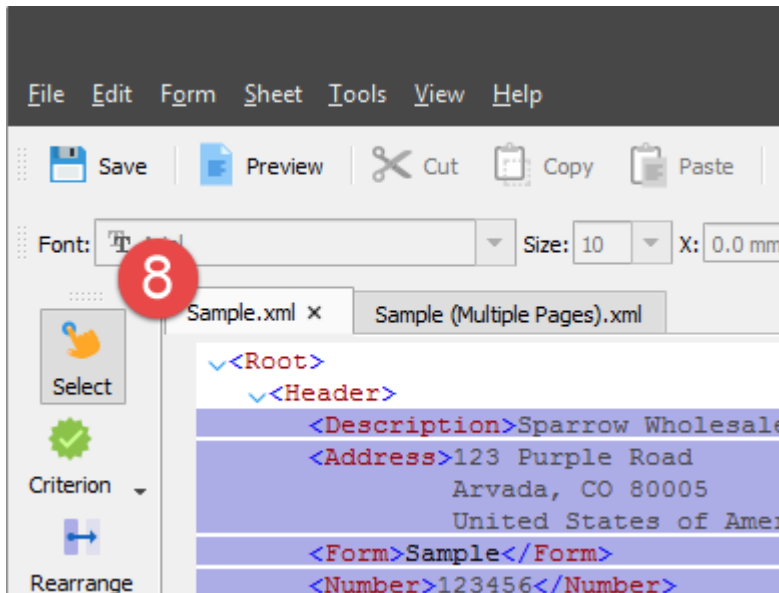


6. Select the **Single Page** radio button in the **Current Page** group box and make the same changes as for the last page.

7. Click **Ok** to confirm changes.

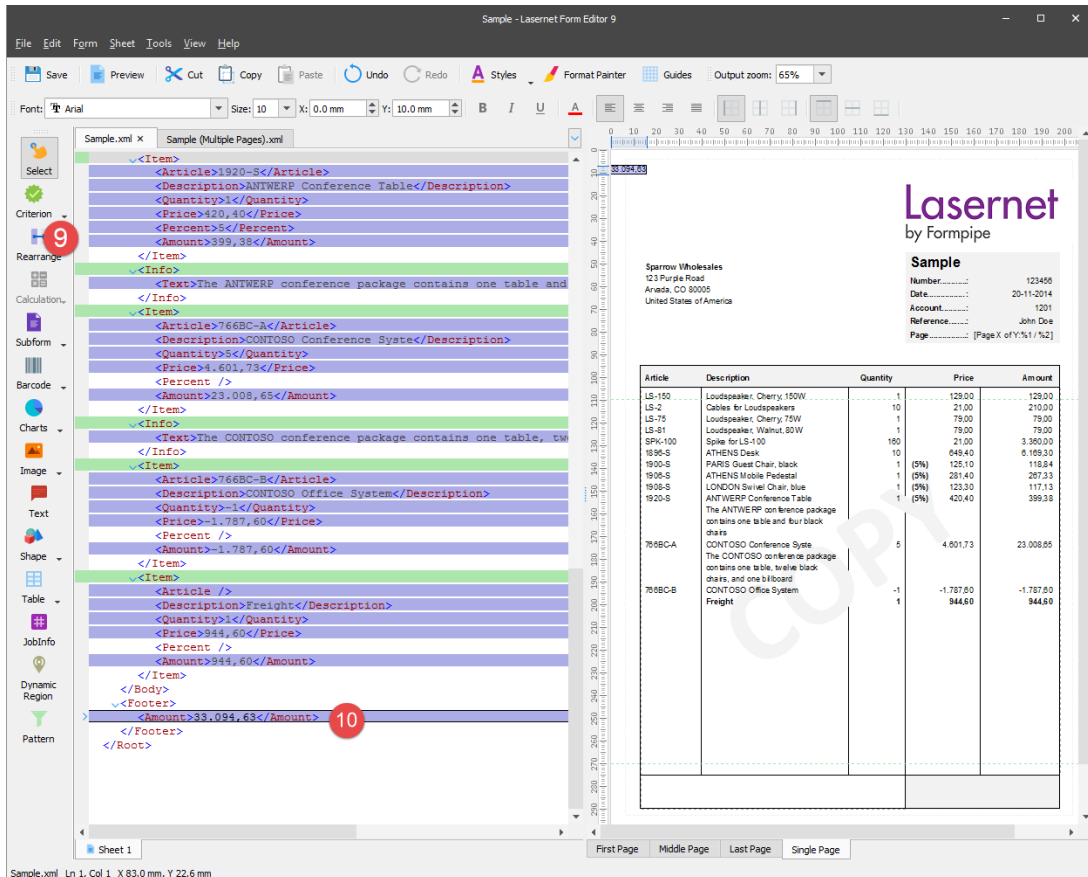


8. Switch to the tab of the **Sample.xml** grab file.



9. On the Developer toolbar, click the **Rearrange** tool.

10. In the input, click the **/Root/Footer/Amount** node.

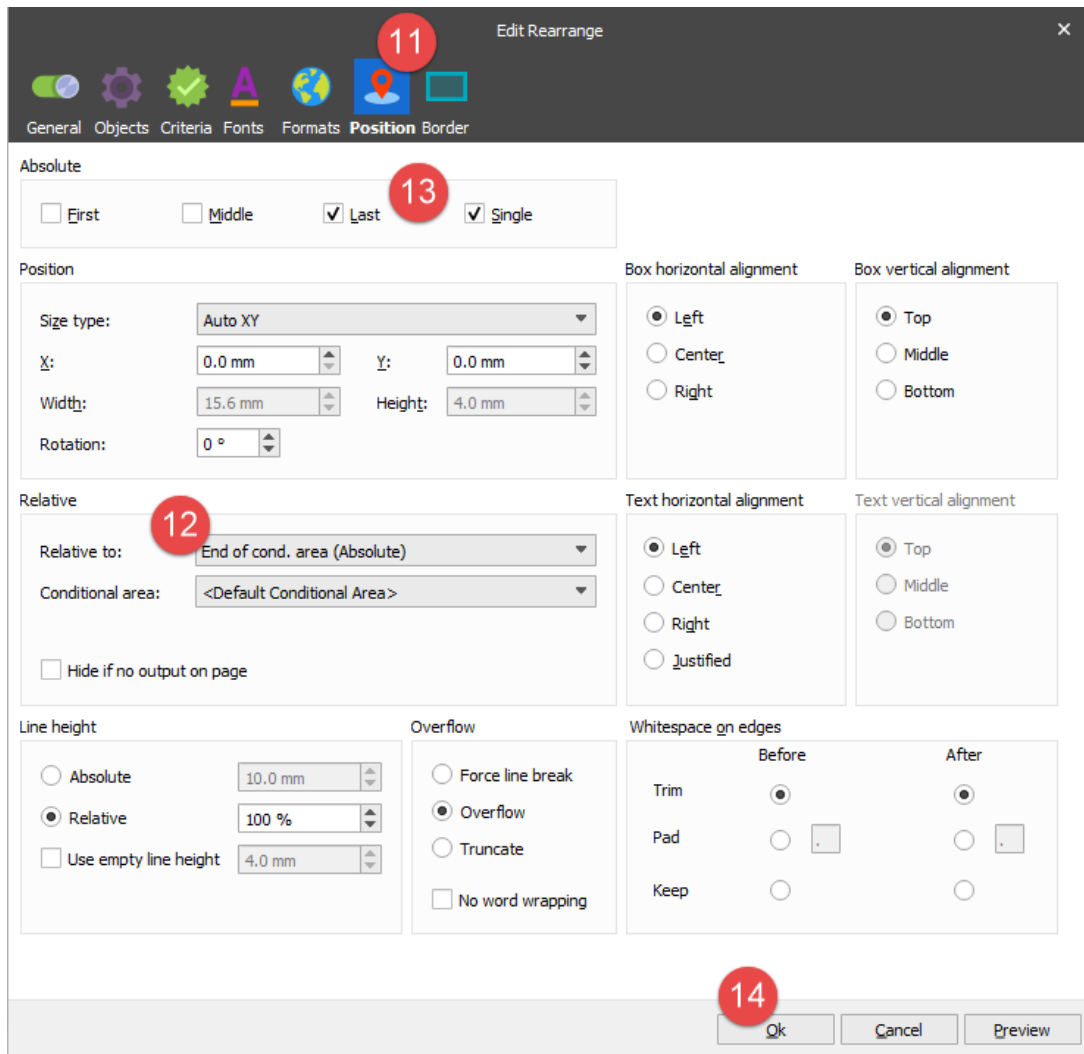


11. Edit properties for the last added rearrange. To this end, open the **Edit Rearrange** dialog and switch to the **Position** tab.

12. In the **Relative** group box, set **Relative to** to **End of cond. Area (Absolute)**.

13. Select the **Last** and **Single** check boxes in the **Absolute** group box.

14. Click **Ok** to confirm changes.



15. On the Property bar, set **Font** to **18 pt** and **Bold**, the **X** position to **195 mm**, **Y** to **11 mm** and align the text right.

Sample - Lasernet Form Editor 9

File Edit Form Sheet Tools View Help

Save Preview Cut Copy Paste Undo Redo Styles Format Painter Guides Output zoom: 65%

Font: Arial Size: 18 X: 195.0 mm Y: 15.0 mm B I U A

Sample.xml x Sample (Multiple Pages).xml

15

Lasernet  
by Formpipe

Sparrow Wholesales  
123 Purple Road  
Anada, CO 80005  
United States of America

Sample  
Number..... 123456  
Date..... 20-11-2014  
Account..... 1201  
Reference..... John Doe  
Page..... [Page X of Y: %1 / %2]

Article	Description	Quantity	Price	Amount
LS-150	Loudspeaker: Cherry 150W	1	129.00	129.00
LS-2	Cables for Loudspeakers	10	21.00	210.00
LS-75	Loudspeaker: Cherry 75W	1	79.00	79.00
LS-81	Loudspeaker: Walnut 80W	1	79.00	79.00
SPK-100	Spike for LS-100	100	21.00	3.300.00
1896-G	ATHENS Desk	10	849.40	8.494.00
1900-S	PARIS Guest Chair, black	1 (5%)	125.10	116.84
1905-S	ATHENS Mobile Pedestal	1 (5%)	281.40	267.33
1908-S	LONDON Serial Chair, blue	1 (5%)	123.30	117.13
1920-S	ANTWERP Conference Table	1 (5%)	420.40	399.38
	The ANTIWERP conference package contains one table and four black chairs			
766BCA	CONTOSO Conference System The CONTOSO conference package contains one table, twelve black chairs, and one billboard	5	4.601.73	23.008.65
766BCB	CONTOSO Office System Freight	-1	-1.787.60	-1.787.60
		1	944.60	944.60

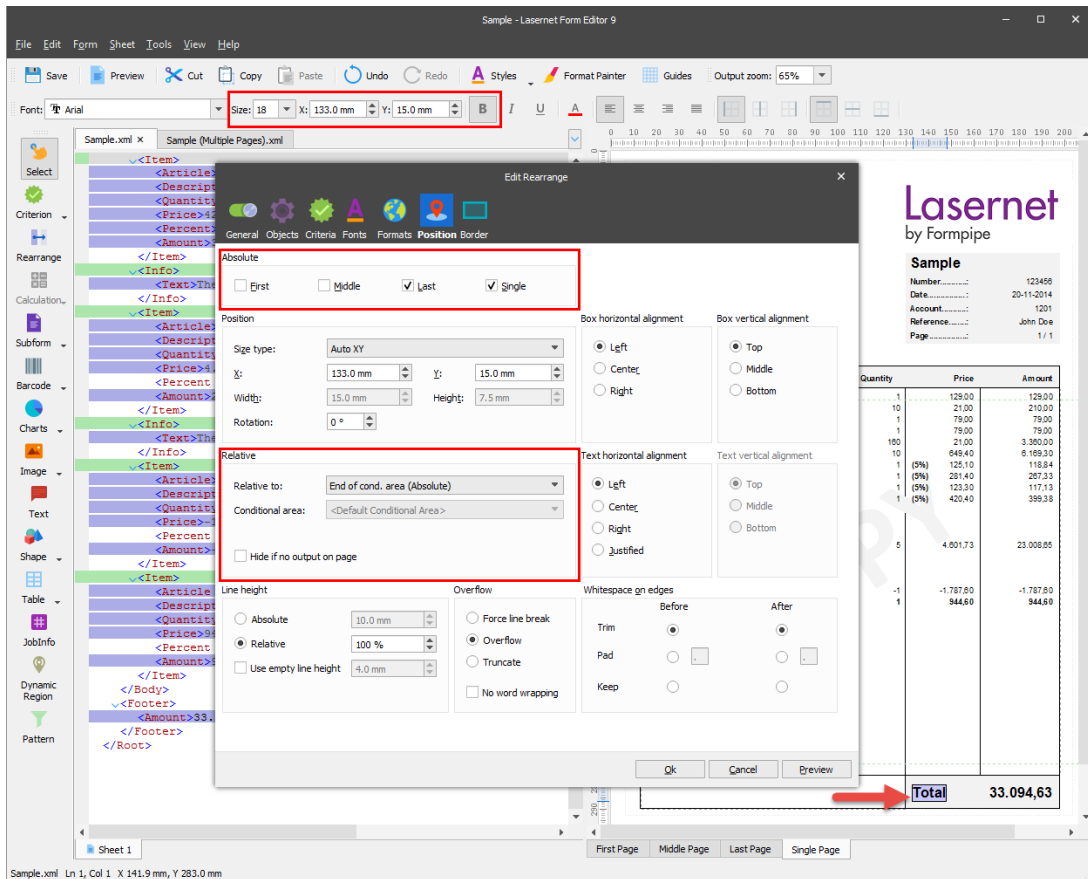
33.094,63

Sheet 1

First Page Middle Page Last Page Single Page

Sample.xml Ln 1, Col 1 X 36.5 mm, Y 74.6 mm

16. On the Developer toolbar, select the **Text** tool and insert the **Total** text. For the added text, set **Font size** to **18 pt**, the **X position** to **133 mm** and **Y** to **15 mm**. In the **Absolute** group box, select the **Last** and **Single** check boxes, set **Relative to** to **End of cond. area (Absolute)**.

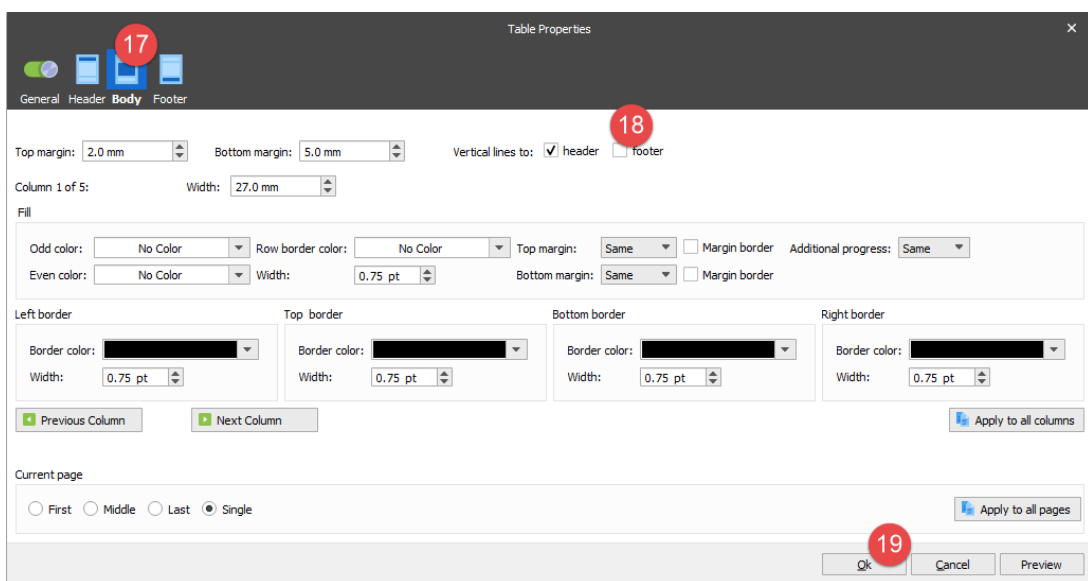


Now let's remove the vertical lines between the end of the last item line and the footer of the table. To this end, follow the steps listed below.

17. Select the table and right-click it to open the **Table Properties** dialog. Switch to the **Body** tab.

18. Clear the **Footer** check box for the **Vertical lines to** setting.

19. Click **Ok** to confirm settings.



A vertical line between the last item line and the footer is now removed as it is illustrated

on the picture below (dotted lines).

**Lasernet**  
by Formpipe

**Sparrow Wholesales**  
123 Purple Road  
Arvada, CO 80005  
United States of America

**Sample**  
Number.....: 123456  
Date.....: 20-11-2014  
Account.....: 1201  
Reference.....: John Doe  
Page.....: [Page X of Y:%1 / %2]

Article	Description	Quantity	Price	Amount
LS-150	Loudspeaker, Cherry, 150W	1	129,00	129,00
LS-2	Cables for Loudspeakers	10	21,00	210,00
LS-75	Loudspeaker, Cherry, 75W	1	79,00	79,00
LS-81	Loudspeaker, Walnut, 80W	1	79,00	79,00
SPK-100	Spike for LS-100	180	21,00	3.380,00
1896-S	ATHENS Desk	10	649,40	6.169,30
1900-S	PARIS Guest Chair, black	1 (5%)	125,10	118,84
1906-S	ATHENS Mobile Pedestal	1 (5%)	281,40	267,33
1908-S	LONDON Swivel Chair, blue	1 (5%)	123,30	117,13
1920-S	ANTWERP Conference Table	1 (5%)	420,40	399,38
	The ANTWERP conference package contains one table and four black chairs			
766BC-A	CONTOSO Conference System	5	4.601,73	23.008,65
	The CONTOSO conference package contains one table, twelve black chairs, and one billboard			
766BC-B	CONTOSO Office System	-1	-1.787,60	-1.787,60
	Freight	1	944,60	944,60
			<b>Total</b>	<b>33.094,63</b>

To complete designing the form, you need to perform the same changes for the last page. This is required for supporting the single and multi-page layouts.



Lasernet by Formpipe					Lasernet by Formpipe					Lasernet by Formpipe				
Invoice Worksheet				Sample	Invoice Worksheet				Sample	Invoice Worksheet				Sample
123 Purple Road Anytown, CO 80001 United States of America				Number..... 123456 Date..... 20-11-2014 Account..... 1234 Reference..... John Doe Page..... 1 of 3	123 Purple Road Anytown, CO 80001 United States of America				Number..... 123456 Date..... 20-11-2014 Account..... 1234 Reference..... John Doe Page..... 2 of 3	123 Purple Road Anytown, CO 80001 United States of America				Number..... 123456 Date..... 20-11-2014 Account..... 1234 Reference..... John Doe Page..... 3 of 3
Article	Description	Quantity	Price	Amount	Article	Description	Quantity	Price	Amount	Article	Description	Quantity	Price	Amount
LS-190	Loudspeaker: Cherry 150W	1	129.00	129.00	4612183	Transfer from previous page			4612183	80211	Transfer from previous page	25	5.80	145.00
LS-2	Cables for Loudspeakers	10	21.00	210.00		Basic materials that offer flexibility over rigidity for ride comfort, heavy duty/yarns for load capacity, and multiple mounting points for luggage racks, mirrors and seat covers.				80220	Quantity Upgrade			5.00
LS-75	Loudspeaker: Cherry 75W	1	79.00	79.00						80220	Slave or Mount CD/face Driv	2.00	1.00	2.0000
LS-81	Loudspeaker: Walnut 80W	1	79.00	79.00						80220	ATTN: Disk		1.00	1.0000
SPU-100	Spine for LS-100	100	21.00	2100.00						80220	PAGE Queue Char: black		1.00	1.0000
190S-S	ATTN: Disk	10	848.40	8484.00							Front Wheel			
190S-S	PAGE Queue Char: black				1100	Ben	2	150.00	300.00	1100	Back Wheel			
190S-S	ATTN: Disk				1110	Spokes	2	150.00	300.00	1110	Front Hub			
190S-S	LONDON Event Chair: blue	1	251.40	251.40	1120	Spokes	2	150.00	300.00	1120	Spoke Front			
190S-S	ATTN: Disk				1151	Axle Front Wheel	1	400.00	400.00	1151	Tire			
190S-S	The ANTWERP conference package includes one table and four chairs	1	117.13	117.13	1150	Tire	1	45.00	45.00	1150	Tube			
706CA	CONFEO conference table	5	4091.73	20458.65	1160	Tube	2	150.00	300.00	1160	Back Wheel			
	The CONFEO conference package includes one table, twelve back chairs, and one 400mm				1200	Back Wheel	1	1200.00	1200.00	1200	Back Hub			
706CB	CONFEO Office System	1	1787.50	1787.50	1211	Axle Back Wheel	1	400.00	400.00	1211	Spoke Back			
706CC	CONFEO Storage System	1	844.50	844.50	1201	Chain Assy	2	400.00	800.00	1201	Chain			
	The CONFEO Storage System includes two extra modules in basic grey.				1210	Lamp	2	150.00	300.00	1210	Brake			
804W	Computer: Basic Package	2	55.00	110.00	1210	Hand rear wheel Brake	1	120.00	120.00	1210	Pan: black			
	Exclusive price for computer package only/line mount				1210	Hand front wheel Brake	1	120.00	120.00	1210	Pan: black			
805W	Computer: Lighter Package	2	114.20	228.40	1210	Pan: black	1	2.70	2.70	1210	Pan: black			
	Exclusive price for computer package only/line mount				80221	270GA Kit-4x DE	1	25.90	25.90	80221	270GA Kit-4x DE			
824W	Server: Entry level Package	5	345.50	1727.50	80224	40GB ATA-6 IDE	1	35.00	35.00	80224	40GB ATA-6 IDE			
805W	Computer: TURBO Package	3	187.10	561.30	80225	8GB Ultra 1024M SCSI	2	15.90	31.80	80225	8GB Ultra 1024M SCSI			
	Exclusive price for computer package only/line mount				80226	16GB Ultra 1024M SCSI	1	20.40	20.40	80226	16GB Ultra 1024M SCSI			
1001	Towing Bicycle	2	4500.00	9000.00	80100	Printing Paper	100	1.14	114.00	80100	Printing Paper			
	To make the bike sufficiently robust, comfortable and capable of carrying heavy loads, special features include a long wheelbase for ride comfort and to meet needs of long-distance touring.				80200	Graphic Card 5400	10	6.50	65.00	80200	Graphic Card 5400			
	Transfer to next page			4612183	80204	Lens 1024x768 Colorizer	10	6.50	65.00	80204	Lens 1024x768 Colorizer			
					80209	2344x CDE CD-ROM	5	17.50	87.50	80209	2344x CDE CD-ROM			
					80210	Barcode IDE CD-ROM/5th	5	14.76	73.80	80210	Barcode IDE CD-ROM/5th			
						Transfer to next page			37 012.68		Transfer to next page			62,283.15

### Attachments

- [22.-Tables-End-of-Cond.-Area.Inconfig \(418.06 KB\)](#)