

Multiple Areas

Alex Pearce - 2024-03-18 - Comments (0) - Lasetnet Form Editor 9 - Designing Forms

Lasetnet

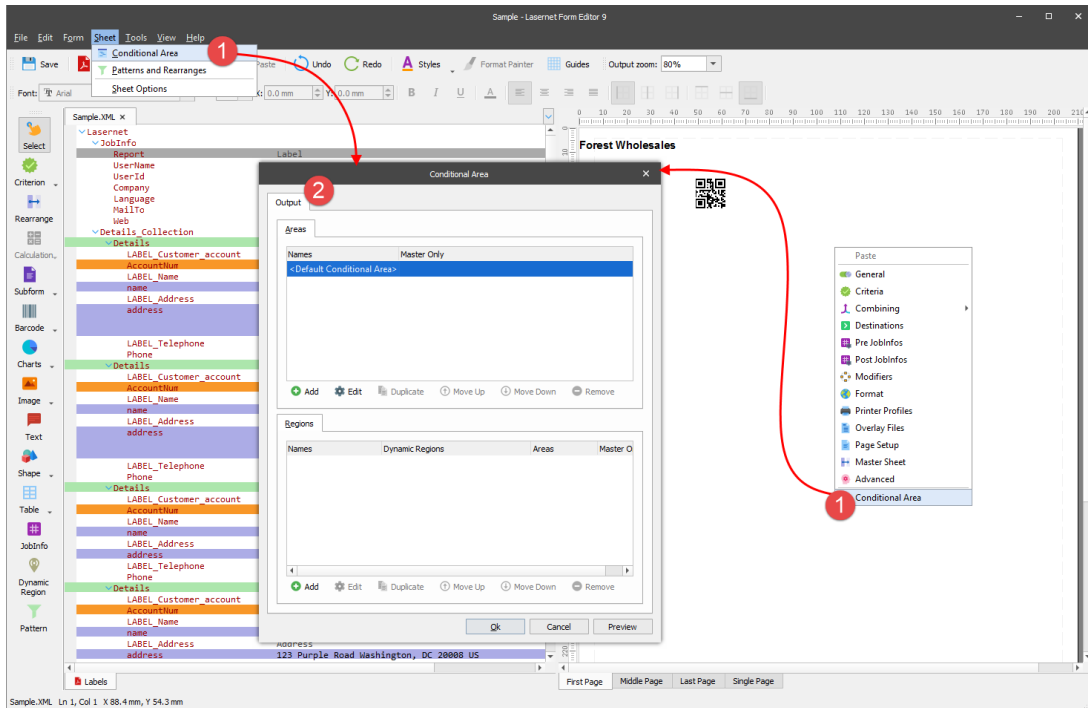
The **Multiple areas** functionality allows generating automatically multiple subareas in the output at a time. Thus, you can avoid creating many subareas within one custom conditional area one-by-one, but create multiple at a time by applying the same parameters to all of them.

Exercise

Download and import the attached configuration called **39. Multiple Areas** in Lasetnet Developer 9. Afterwards, go to the **Forms** section and open the **Sample** form.

Once the **Sample** form opens, start adding multiple subareas to the output. To this end, follow the steps listed below:

1. On the **Sheet** menu, click **Conditional Area**. Alternatively, right-click in an empty space of the output, and then click **Conditional Area** on the context menu that appears.
2. The **Conditional Area** dialog displays with the **Output** tab.

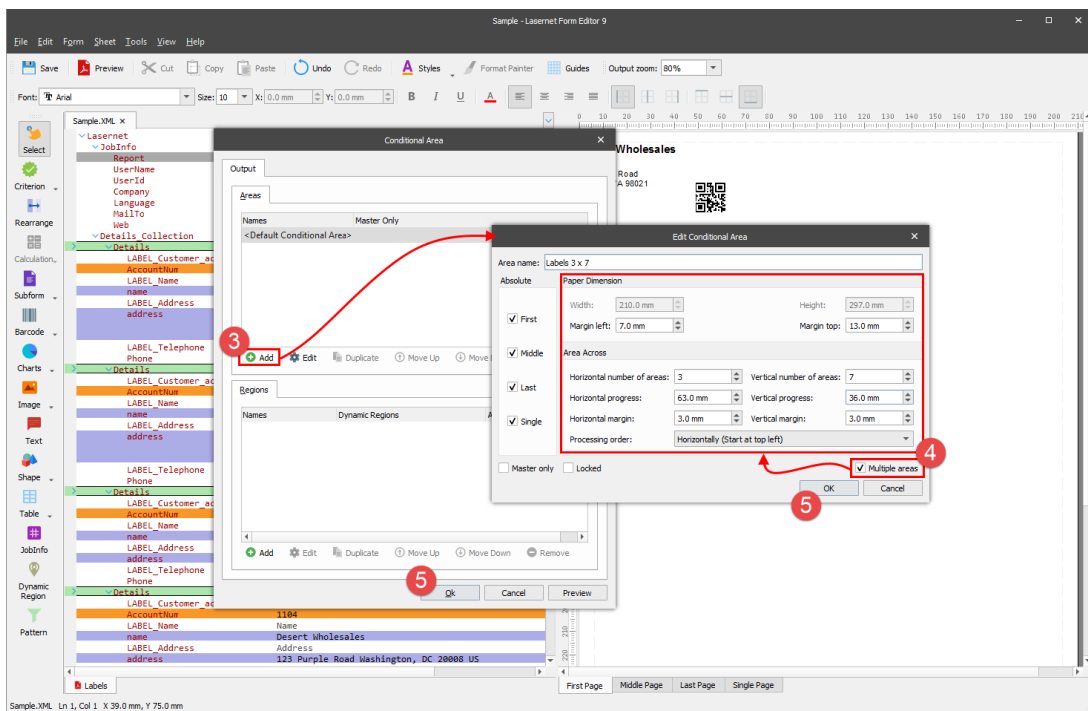


3. In the **Areas** group box, click the **Add** button.

4. With the dialog displayed, first, select the **Multiple areas** check box, then define an area name as well as parameters required for multiple subareas. For values, see the picture below.

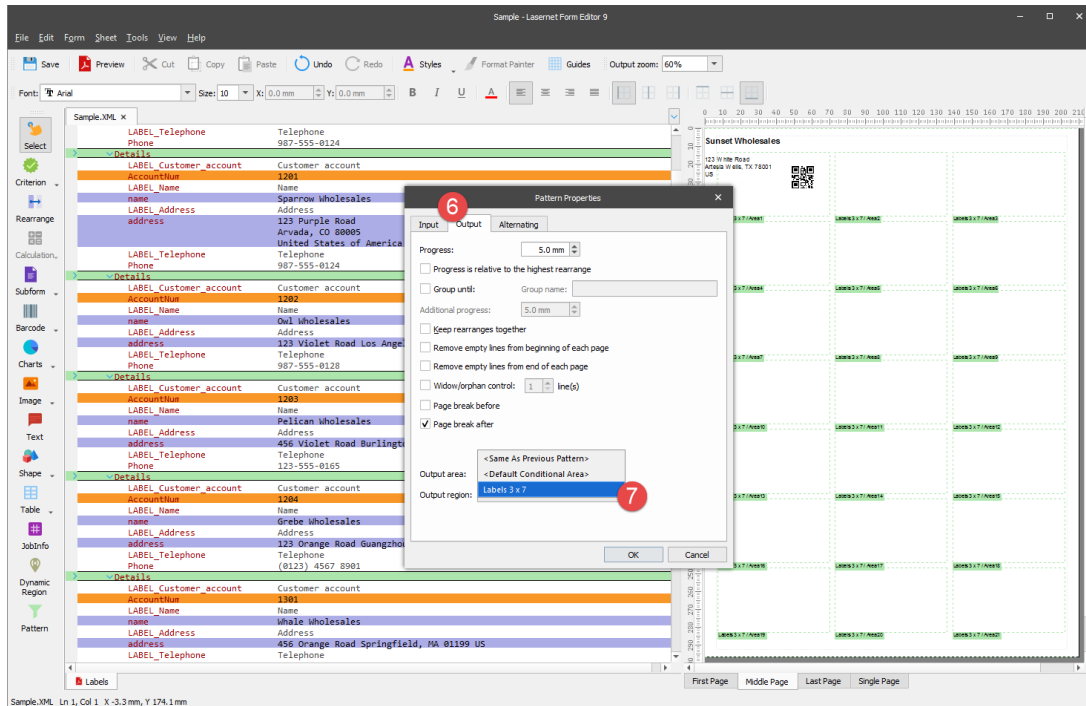
5. Once you are done, click the **OK** button on both dialogs.

As a result, multiple subareas are added to the output possessing the parameters you have specified.



6. The next step is adding a pattern to the multiple subareas. To this end, open the pattern properties for editing and switch to the **Output** tab.

7. From the **Output area** drop-down combo box, select the area you have added (**Labels 3 x 7**).



As a result, the pattern text is displayed in each subarea of the output.



Attachments

- [39.-Multiple-Areas.Inconfigx \(108.21 KB\)](#)

Comments (0)