

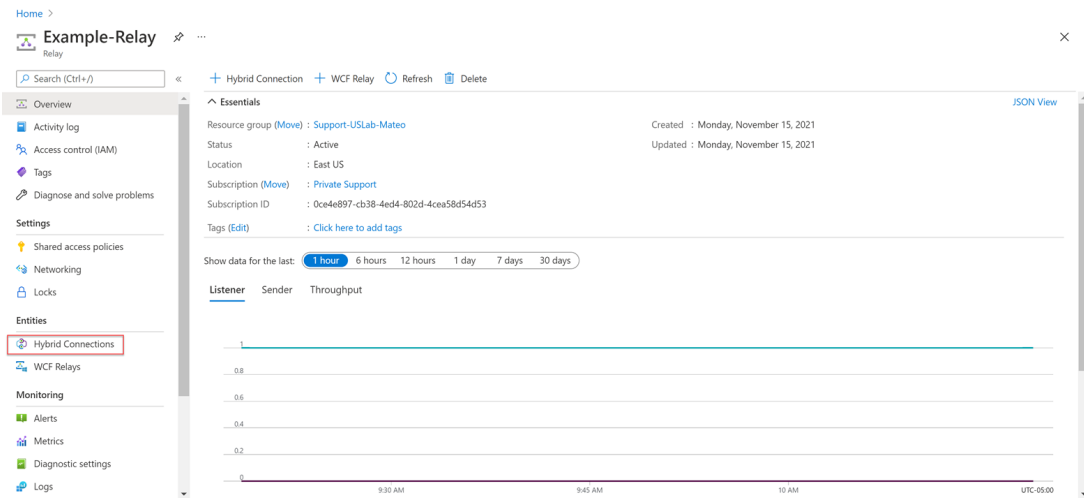
How to set up and connect to a client via an Azure Hybrid Connection

Alex Clemons - 2022-02-15 - Comments (0) - Lasetnet General Information

Lasetnet

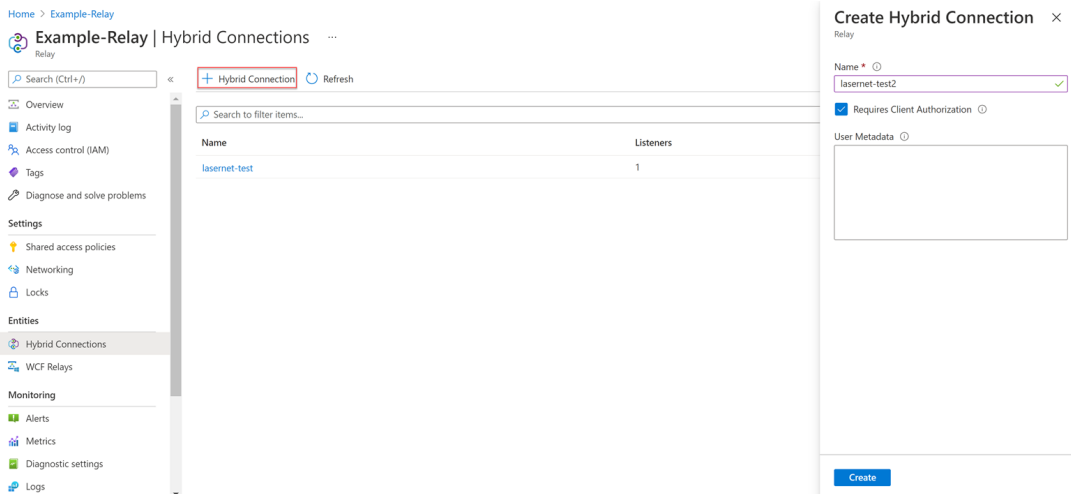
This article explains the process of how to set up and connect to a client via an Azure Hybrid Connection. Please follow these steps:

1. Open **Azure** and create a relay.
2. Click **Hybrid Connections**.

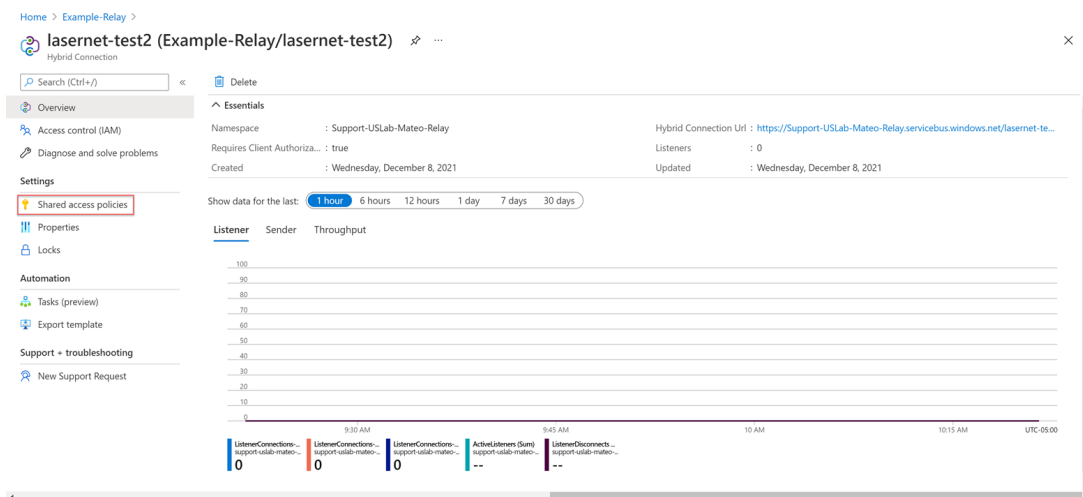


The screenshot shows the Azure portal interface for a relay named 'Example-Relay'. The left-hand navigation pane is visible, with 'Hybrid Connections' highlighted in a red box. The main content area shows the relay's details, including its status (Active), location (East US), and subscription ID. A graph at the bottom displays data for the last 1 hour, with columns for Listener, Sender, and Throughput. The graph shows a single data point at 9:30 AM with a value of 1.0 for the Listener.

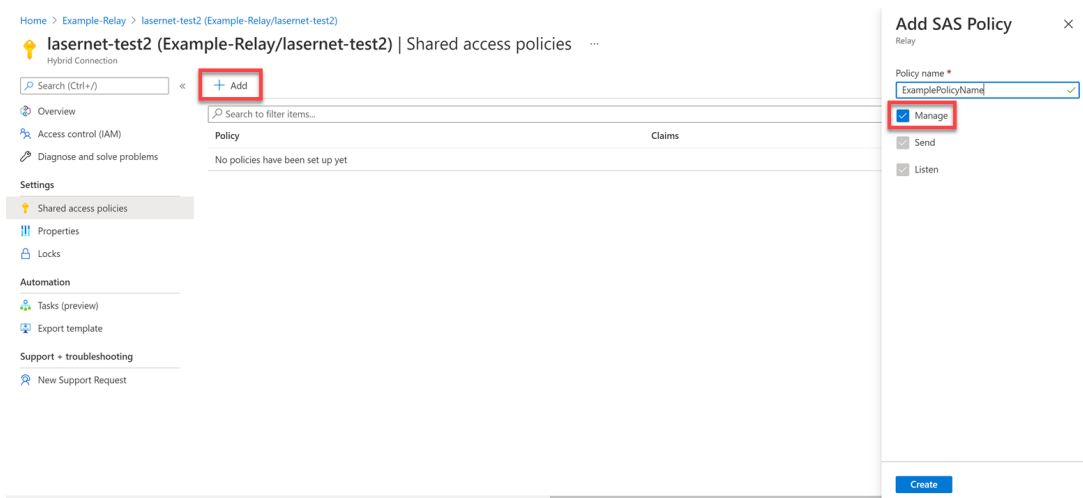
3. Click the **Add Hybrid Connection** button.



4. Once you have created your Hybrid Connection, the following page is displayed. Click **Shared access policies**.

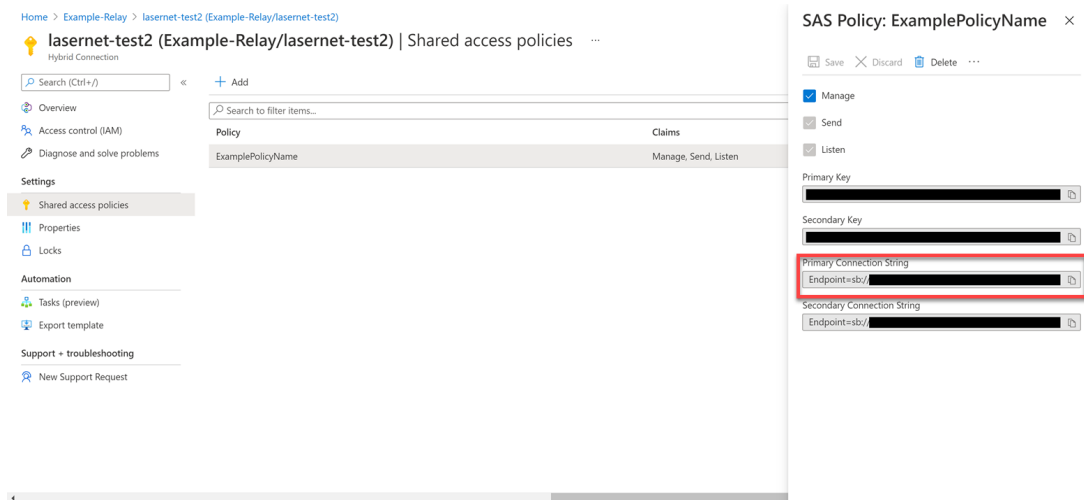


5. Click **Add** to create a new policy and ensure the **Manage** checkbox is cleared.



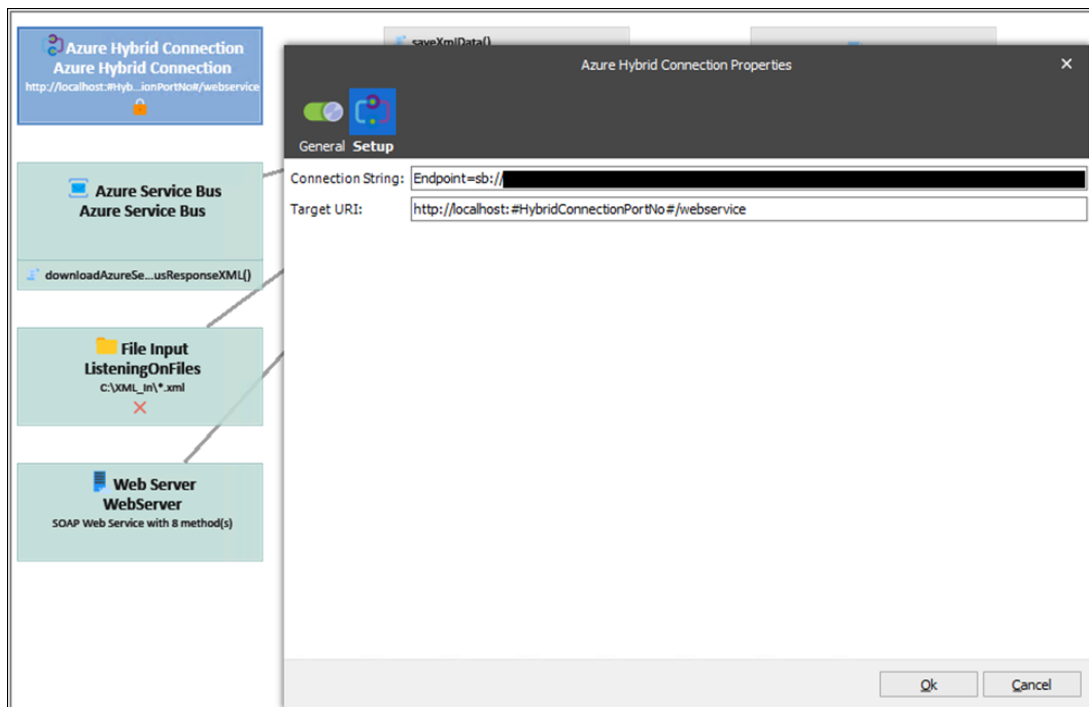
After it has been created, you will be able to see the "Shared access policy" displayed in the *Policy* box.

6. Click the policy to open a menu on the right side and copy the **Primary Connection String**. It should start with Endpoint=sb://Relay-Name.

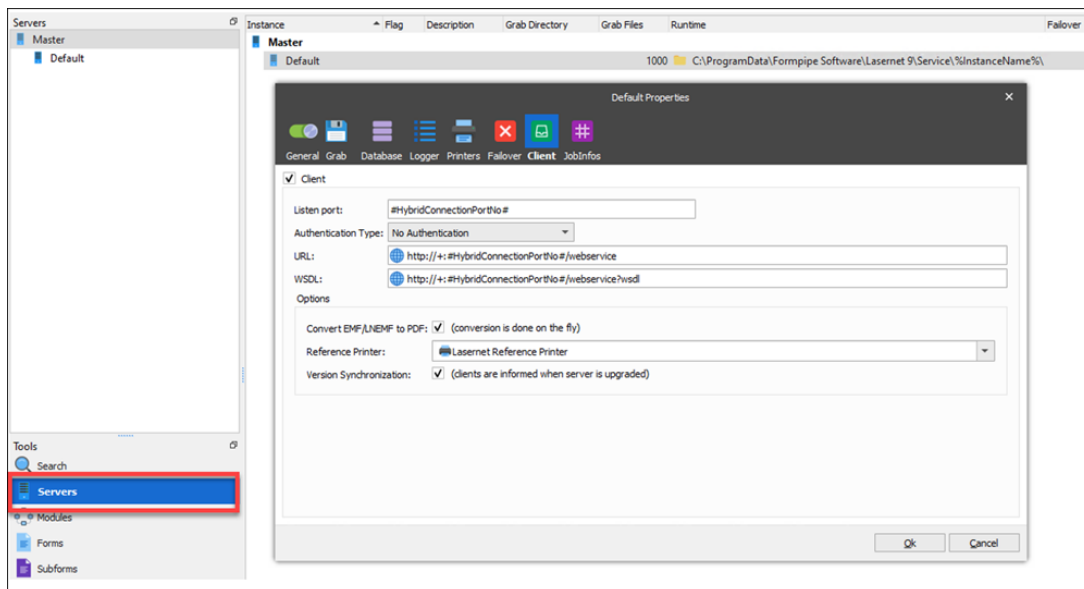


7. Log into **Lasernet Developer** and Create a Module for an Azure Hybrid Connection.

8. Paste the Connection String into the **Connection String** field. Ensure your Target URI looks similar to the image below:



9. After the Connection String has been saved, navigate to the **Servers** section under *Tools*, click the server that you are using for the Lasernet Developer, and ensure the *Client* tab is configured correctly.



10. Open **Client** (if this is your first time opening the Client, a popup window will appear) and add an instance.
11. When the *Options* window appears, ensure you are viewing the **Client** tab.
12. Select **Hybrid Azure Connection** and paste the Connection string into the field.
13. Click the **Test** button to test the connection and you should get a popup saying the connection was successful.

