

How do I backup and restore Lاسernet?

Ross Glover - 2024-08-06 - Comments (0) - Lاسernet FAQs

Lاسernet

We recommend making backups regularly according to your own schedule, as well as on an ad hoc basis before making significant changes. By always having a backup of your system, you will be able to restore it in the event of a system failure, or if recently applied changes cannot be reversed.

When upgrading your software, in some cases it is not possible to downgrade and then open a configuration stored in the Lاسernet Config Server. Although uncommon, making backups will also help prevent data loss due to hardware failures.

Pre-Requisite Steps

Complete the following applicable steps before creating a backup.

Commit Changes

If applicable, ensure changes made to objects have been committed to the Lاسernet Config Server in the Commit changes dialog, to ensure no work is lost.

Release Temporary Jobs

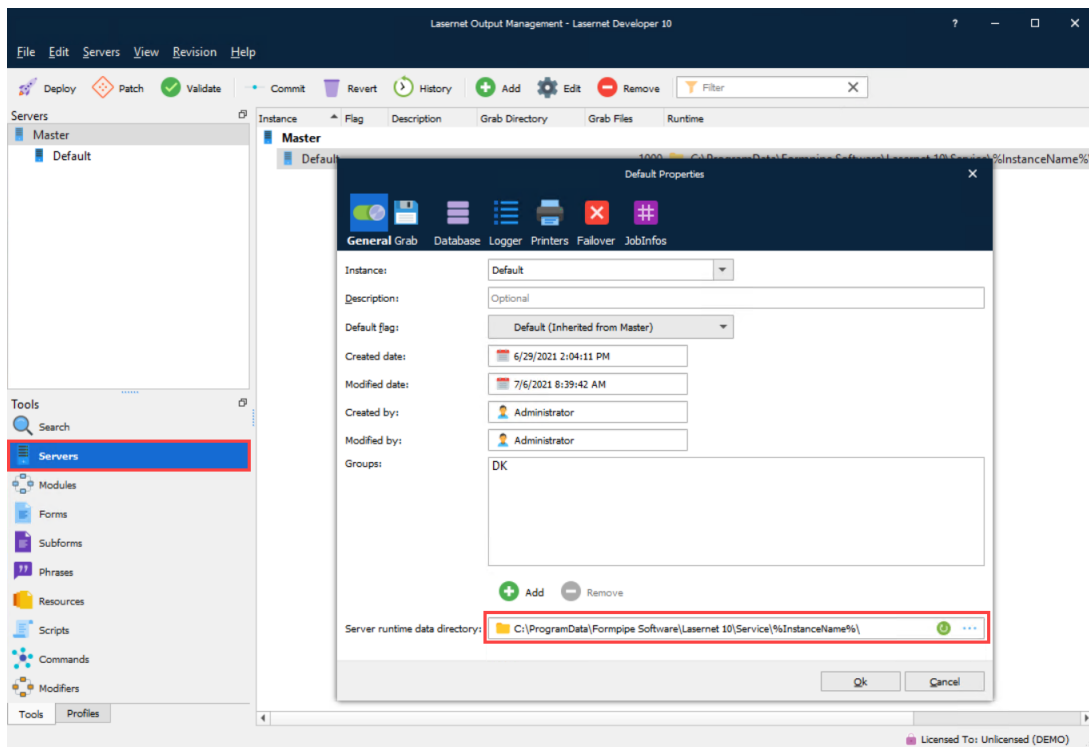
Release temporary jobs, if any. These are stored by the Lاسernet Services.

Note the Server Runtime Data Directory

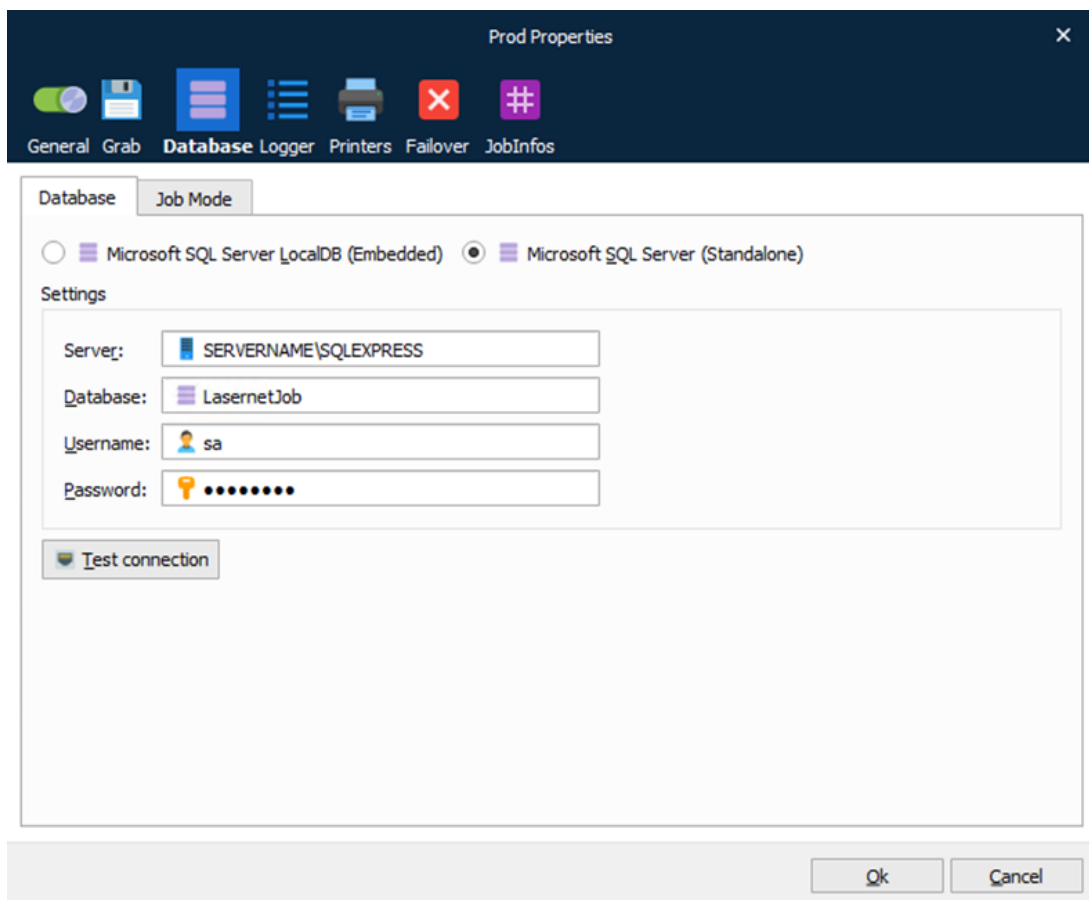
Before creating a backup, note the runtime directory for each instance of each configuration. The default is:

```
C:\ProgramData\Formpipe Software\Lاسernet 10\Service\%InstanceName%
```

1. Open Lاسernet Developer.
2. Open a configuration.
3. Select **Servers**.
4. Double-click the relevant server to display the Default Properties dialog.
5. Select the **General** tab.
6. Note the Server runtime data directory.



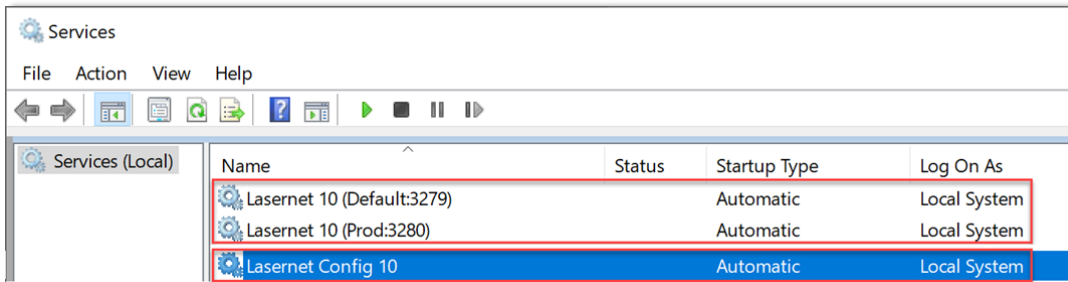
For standalone databases, click the **Database** tab to view and store database names and servers.



Stop Services in Windows

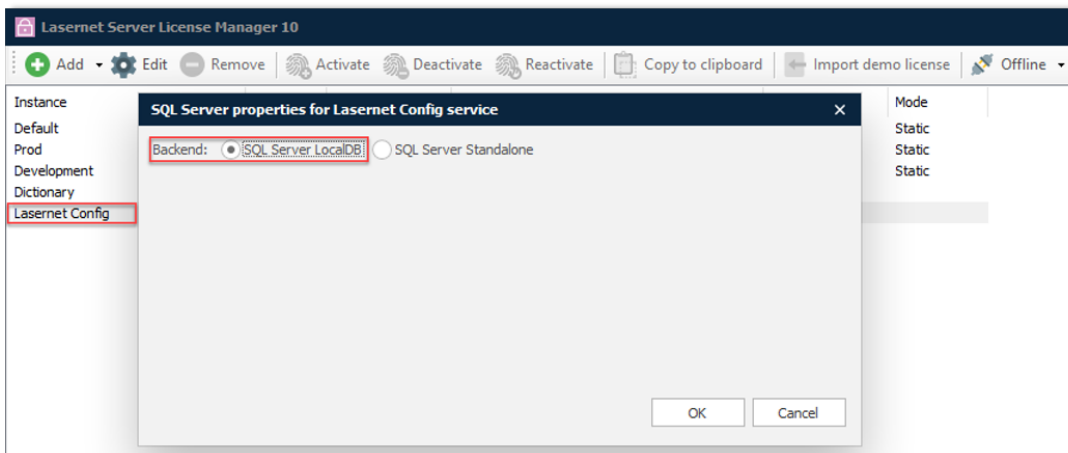
1. Open the Services application.

2. Select your Lasernet Config 10 and Lasetnet 10 Service(s) and stop them.

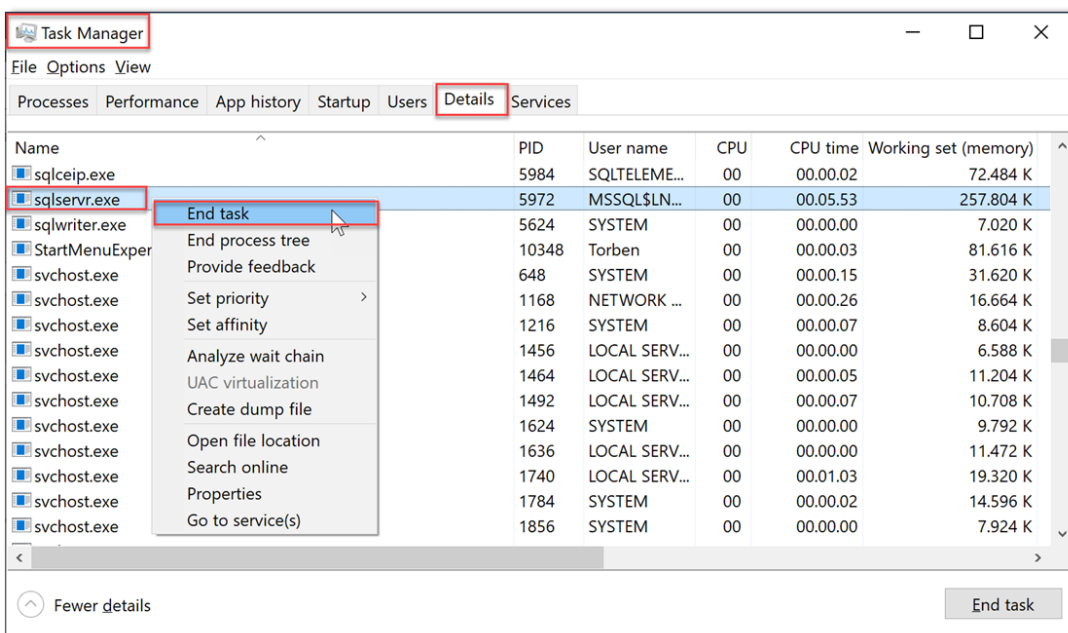


Stop SQL Server Process

The steps in this section are only needed when using SQL Server LocalDB for the Lasetnet Config server.



1. Open the Task Manager application
2. Click the **Details** tab
3. Select `sqlservr.exe` right-click and select **End task**. Repeat this step for any `sqlservr.exe` running on the server.



Create a Backup

Copy Server Runtime Data Directory

The following must be completed to create a successful backup:

Copy Lasernet Config Server runtime directory (in Lasernet 10 folder)

Follow these steps to back up the Config folder:

1. Open Windows Explorer.
2. Go to the runtime directory noted earlier. C:\ProgramData\Formpipe Software\Lasernet 10\
Software\Lasernet 10\
3. Make a copy of the Config folder.

Copy all LAsernet Server instance runtime directories

Follow these steps for each directory you want to include in the backup:

1. Open Windows Explorer.
2. Go to the runtime directory you noted earlier. If the default location is used, this will be C:\ProgramData\Formpipe Software\Lasernet 10\Service\
3. Make a copy of the corresponding instance folder.

Create a Backup of Standalone Database Instance(s)

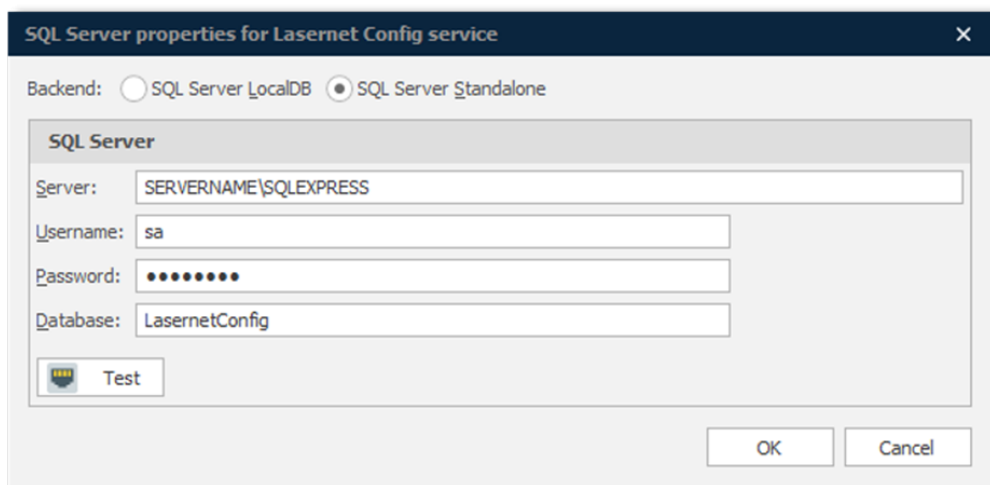
This section applies to standalone SQL databases only. Follow additional steps to create a backup of the databases.

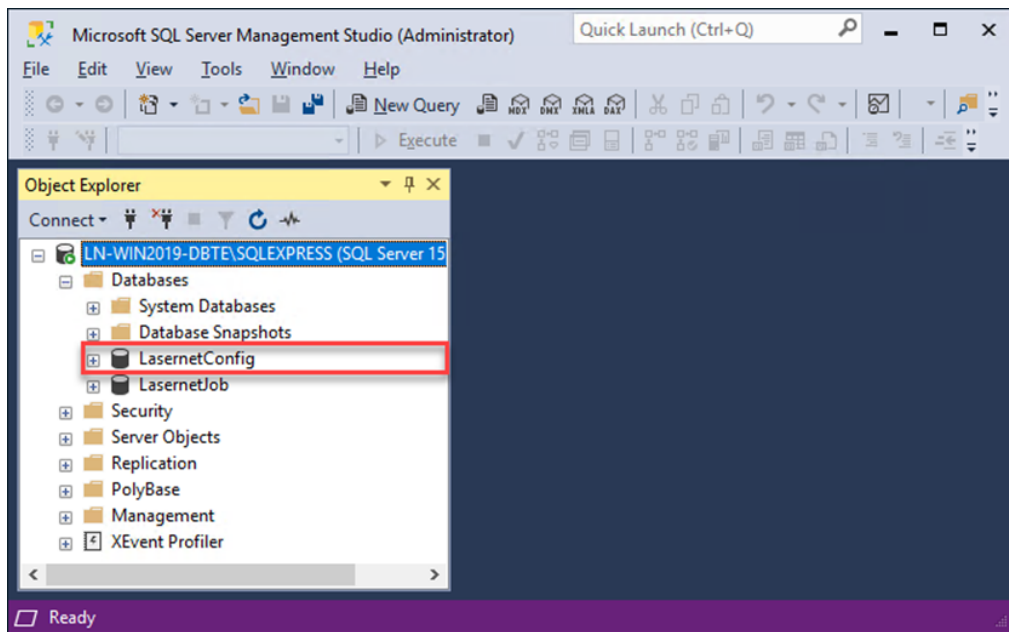
The following must be completed to create a successful backup:

- Backup Config Server SQL standalone database (if applicable)
- Backup all standalone server database instances (if applicable)

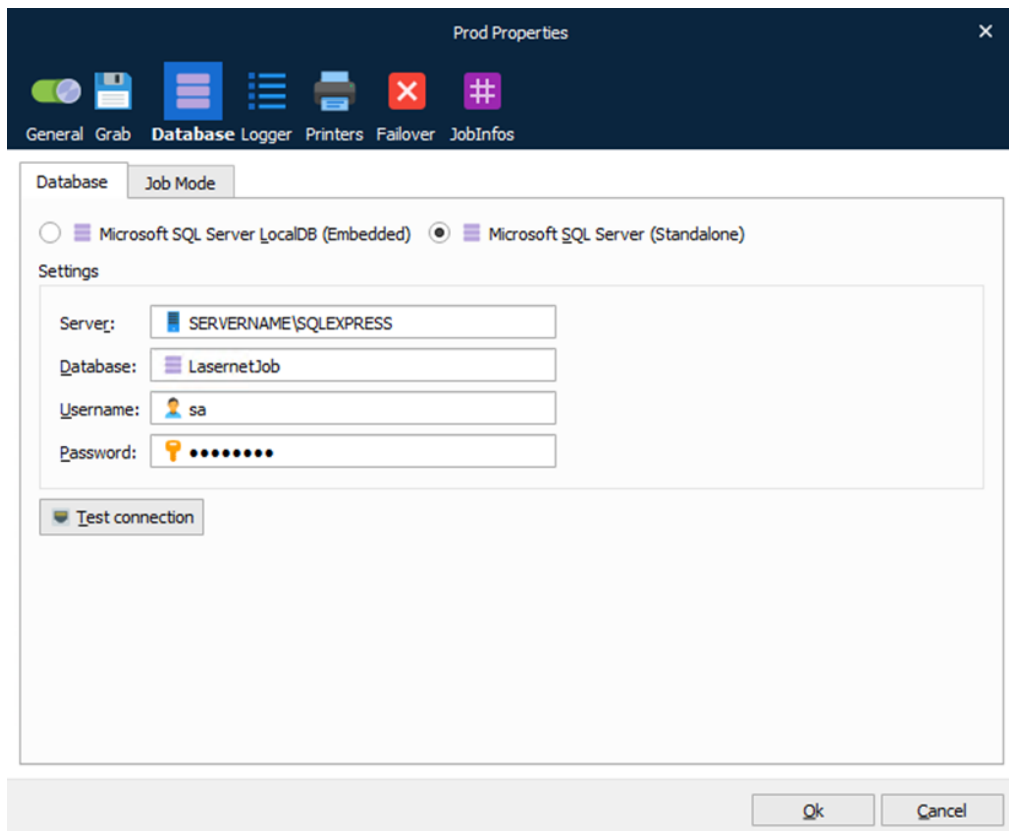
The following steps must be completed for each database you want to include in the backup:

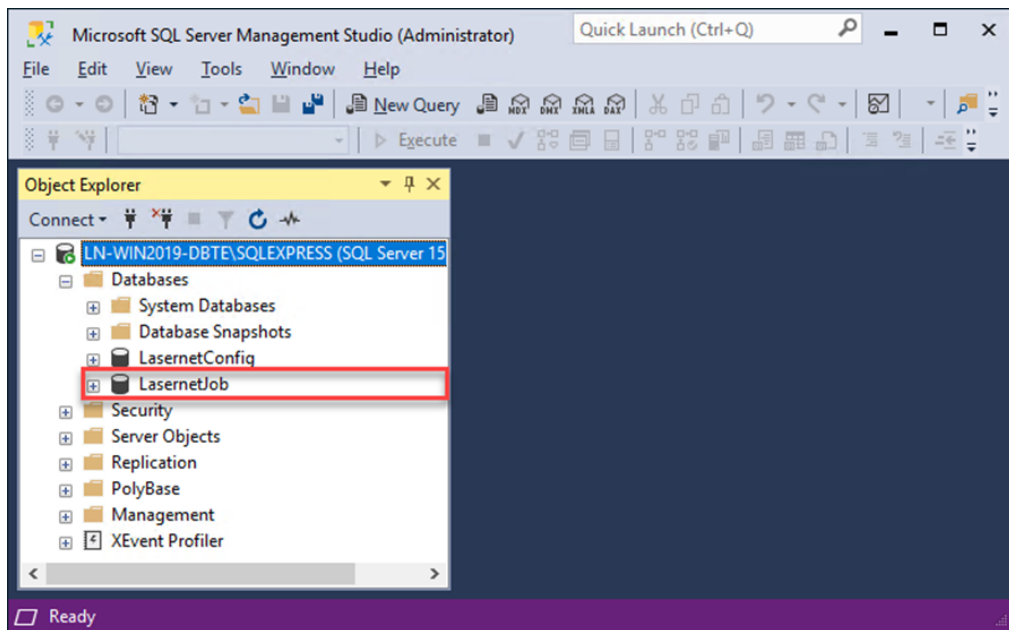
1. Note the database in the SQL Server Properties for LAsernet Config service dialog.
2. Open the SQL Management Studio application.
3. Select the corresponding LAsernet Config database and make a backup.





4. Select the corresponding Lasernet Job database(s) and make a backup.





Restart Services

Restart the LaserNet Config 10 and LaserNet 10 Service(s) to continue using LaserNet as normal.

The sqlserver.exe processes will automatically restart with the LaserNet Config 10 and LaserNet 10 Service(s).

Backup complete

The copied folders and databases can be used as backups, when necessary.

Related Content

- [How to clear down the LaserNet Config Database](#)