

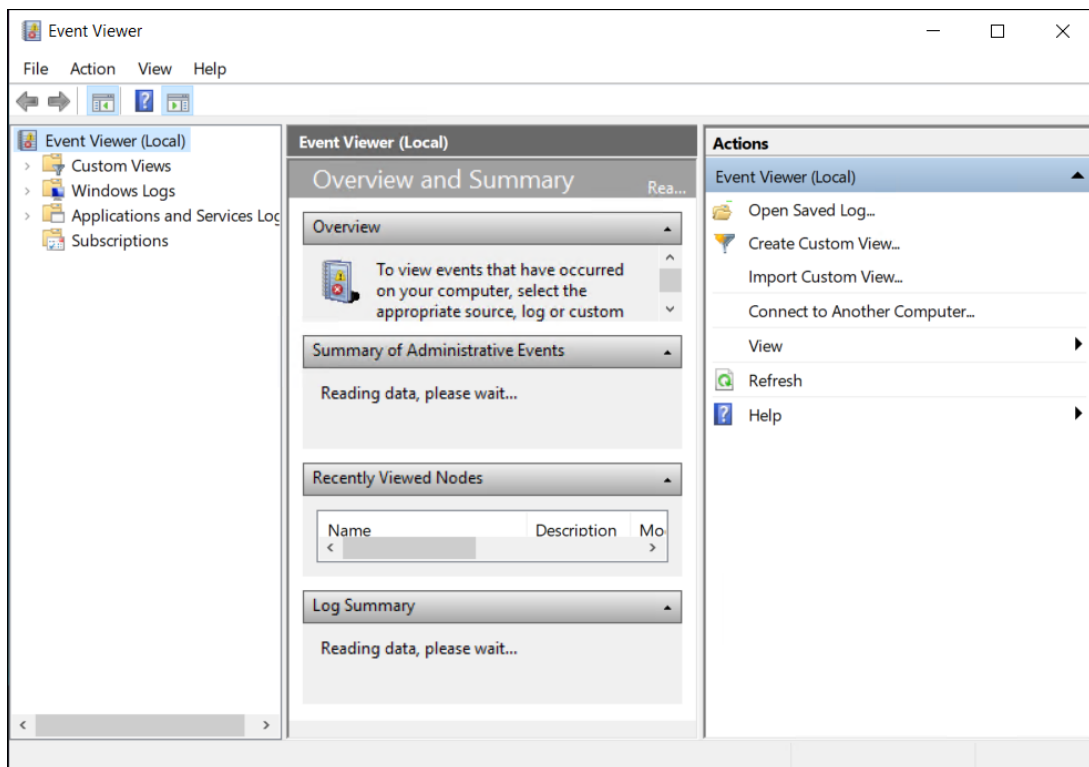
How Do I Add the Cloud Print Connector to Event Viewer?

Alice Petruzzella - 2024-09-13 - Comments (0) - Lasename FO Connector FAQs

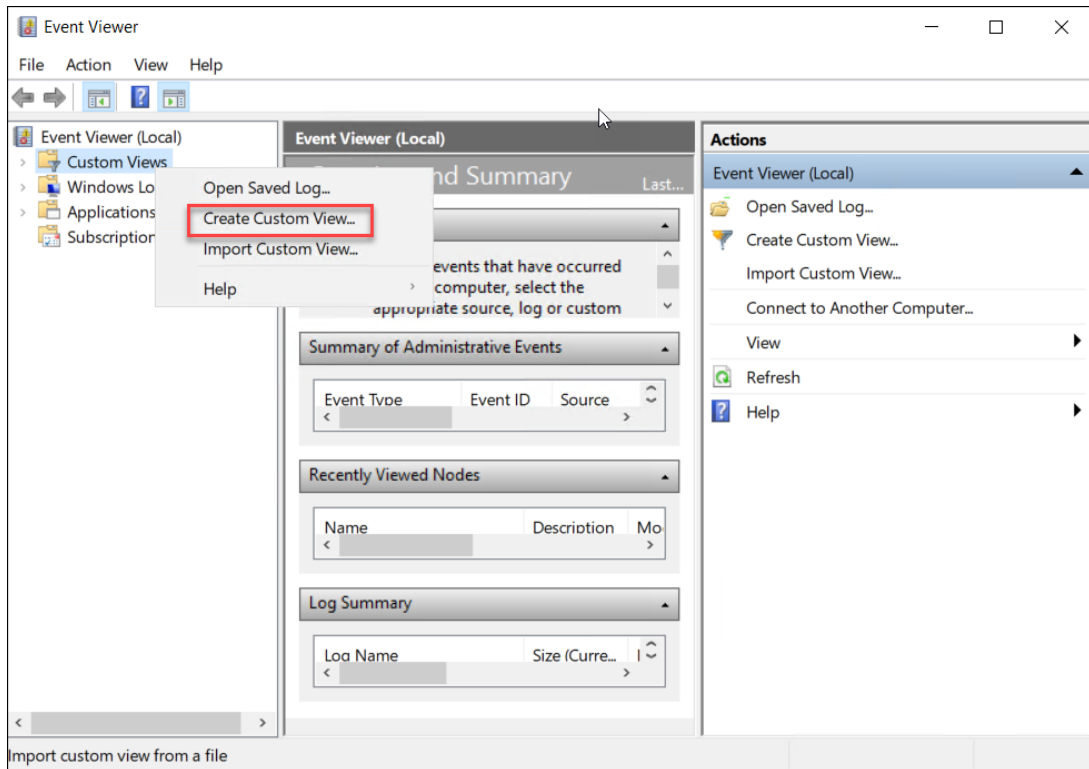
Lasernet for Dynamics 365

To add the **Lasernet Cloud Print Connector** log to the **Event Viewer**, follow these steps:

1. Open **Event Viewer** on the machine where Lasename Cloud Print Connector is installed and you want to monitor the log.



2. Right-click **Custom Views** and select **Create Custom View**.



3. Select **By source**. From the **Event sources** dropdown list, select **Lasernet Cloud Print Connector** if you are running it as a service. Otherwise, if you are running it as a user, select **Lasernet Cloud Print Connector UI**.

Create Custom View ×

Filter XML

Logged: Any time

Event level: Critical Warning Verbose
 Error Information

By log By source

Event logs: Application

Event sources: Lasernet Cloud Print Connector UI

Includes/Excludes Event IDs: Enter ID numbers and/or ID ranges separated by commas. To exclude criteria, type a minus sign first. For example 1,3,5-99,-76

<All Event IDs>

Task category:

Keywords:

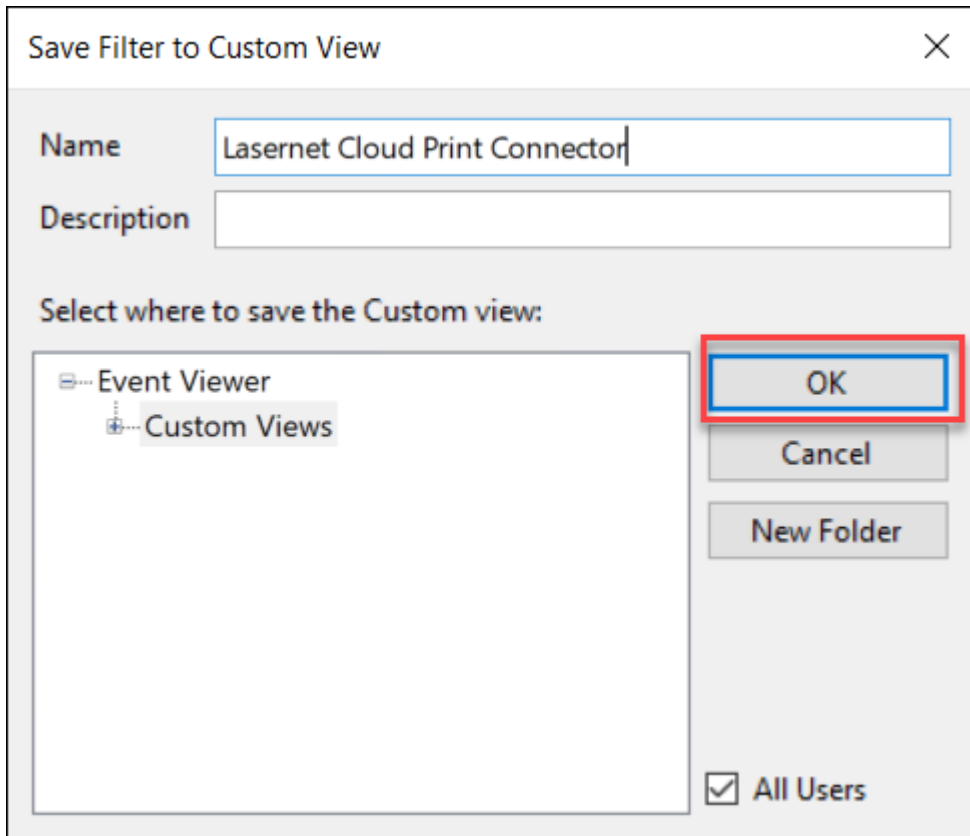
User: <All Users>

Computer(s): <All Computers>

Clear

OK Cancel

4. To close the dropdown list, click anywhere in the **Create Custom View** window.
5. Give the new Filter a name and click **OK**.



Now everything will be logged in the **Event Viewer**.

