

How can I add a static multi-page overlay file?

Sam Menown - 2023-10-30 - Comments (0) - Lاسernet FAQs

Lاسernet

This article describes the process and best practices of adding a multi-page static overlay to your Lاسernet 10 configuration.

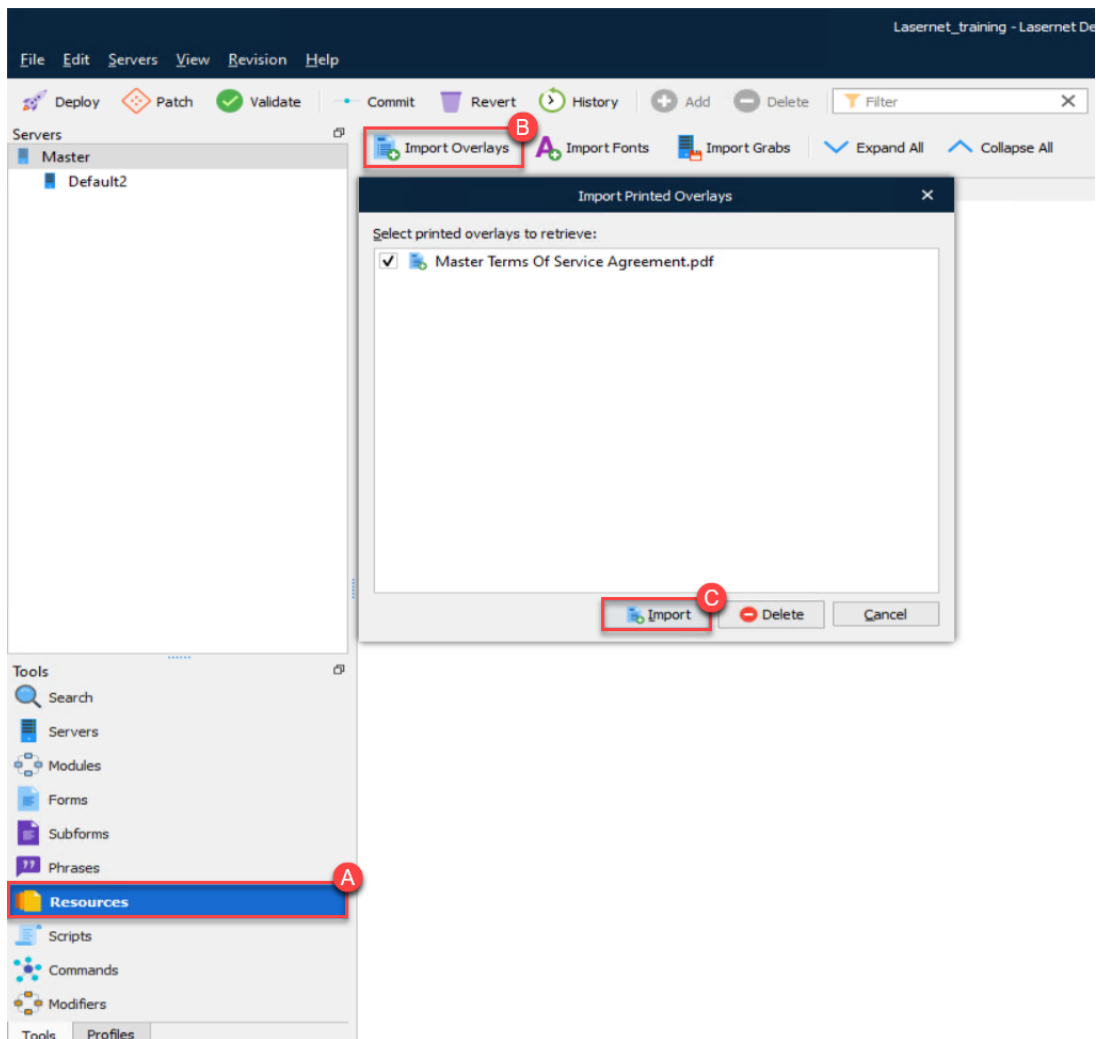
Generating the Overlay

1. Ensure that the Lاسernet Print Capture 10 Windows service is running. Print the document needed for the overlay to the Lاسernet Print Capture printer. This printer is automatically created when the Lاسernet Developer is installed.

2. Navigate to the **Resources** tab (A) and click **Import Overlays** (B).

The original document filename should appear in the new window if it has been printed correctly.

3. Select the file, click **Import** (C), and give it a sensible name. Leave the file type as .lnemf when saving to the resource location.



Adding the File retriever modifier

To use the overlay, a modifier is needed to pick up the file.

Note

Skip this paragraph when using a single page overlay, as the overlay can be set as an additional sheet directly on the form.

For a multiple-sheet overlay:

1. In the Lasetnet Developer, select **Modifier** and double-click the modifier name to add a File Retriever modifier to the build.
2. Set the Path (A) to the location where the imported file is stored (where the .Inemf file has been saved). In the build folder, this will be the Overlay folder. It is important that this location be accessible on the server where the Lasetnet service is running and the service user has access to this file.
3. Set the FileName JobInfo (B) to a sensible name that is not used previously, for example, 'PickupFile'. The name of the file to be picked up is stored in a jobinfo and will be set on the form.
4. The Output JobInfo (C) needs to be 'JobData'.

5. Check the **Replace JobInfo** checkbox (D) and save the settings.

The screenshot shows the 'Edit File Retriever Entry' dialog box. At the top, the 'Active' checkbox is checked. Below it, the 'Protocol' section has radio buttons for 'File', 'FTP', 'FTPS', 'SFTP', 'HTTP', and 'HTTPS', with 'File' selected. The 'Setup' tab is active, and the 'Path' field contains 'C:\PickupFiles'. At the bottom, the 'Filename JobInfo' dropdown is set to 'PickupFile', and the 'Output JobInfo' dropdown is set to 'JobData'. The 'Replace JobInfo' checkbox is checked. The 'Test Connection' button is visible at the bottom left, and 'Ok' and 'Cancel' buttons are at the bottom right. Red callout boxes labeled A, B, C, and D highlight the Path field, the Filename JobInfo dropdown, the Output JobInfo dropdown, and the Replace JobInfo checkbox respectively.

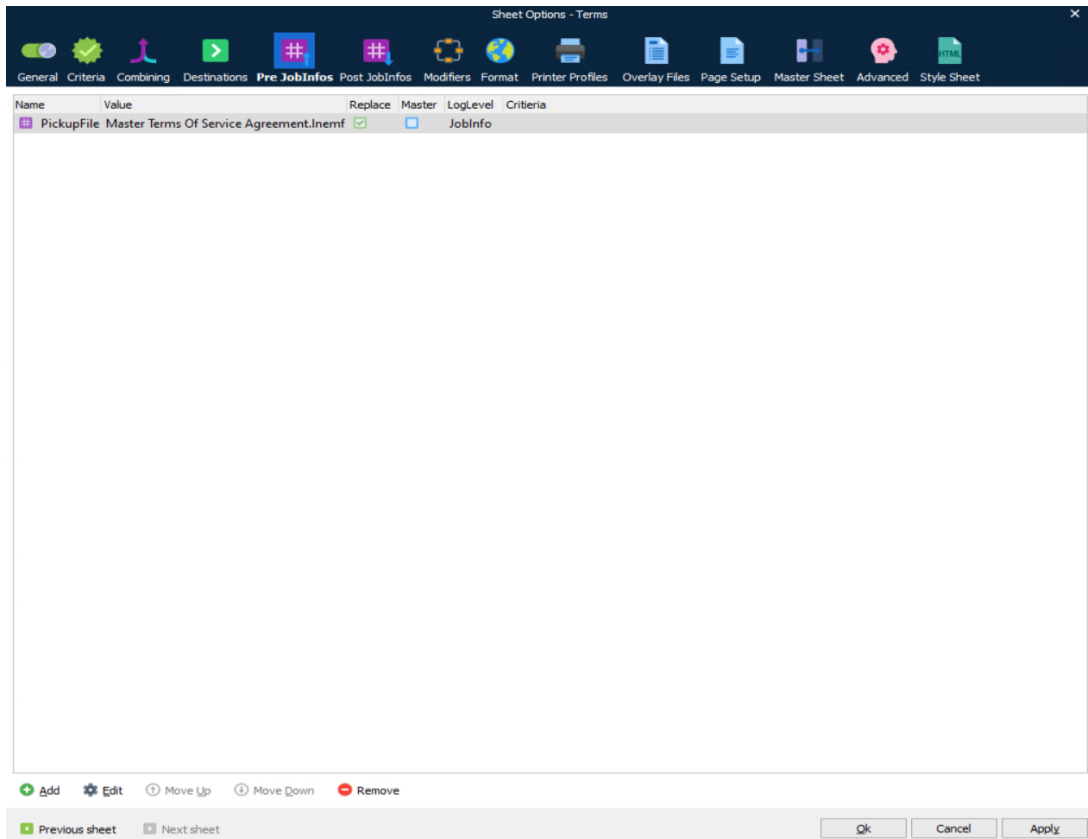
This modifier can now be added to the form.

Setting up the form

The modifier needs to be added to the form, and the JobInfo must contain the filename. To do so, follow these steps:

1. Create a new sheet specifically for the Terms and Conditions page.
2. Within this sheet, add the JobInfo you have just created. In this example, 'PickupFile' is needed.
 - If the name of the file that you want to pick up is static, double-click the new sheet to bring up its properties and add the JobInfo on the **Pre Jobinfos** tab.
 - If the name of the file that you want to pick up is dynamic, then it is best to include it in your input data. To add the JobInfo, click the **JobInfo button** and highlight the data to set as the JobInfo value.

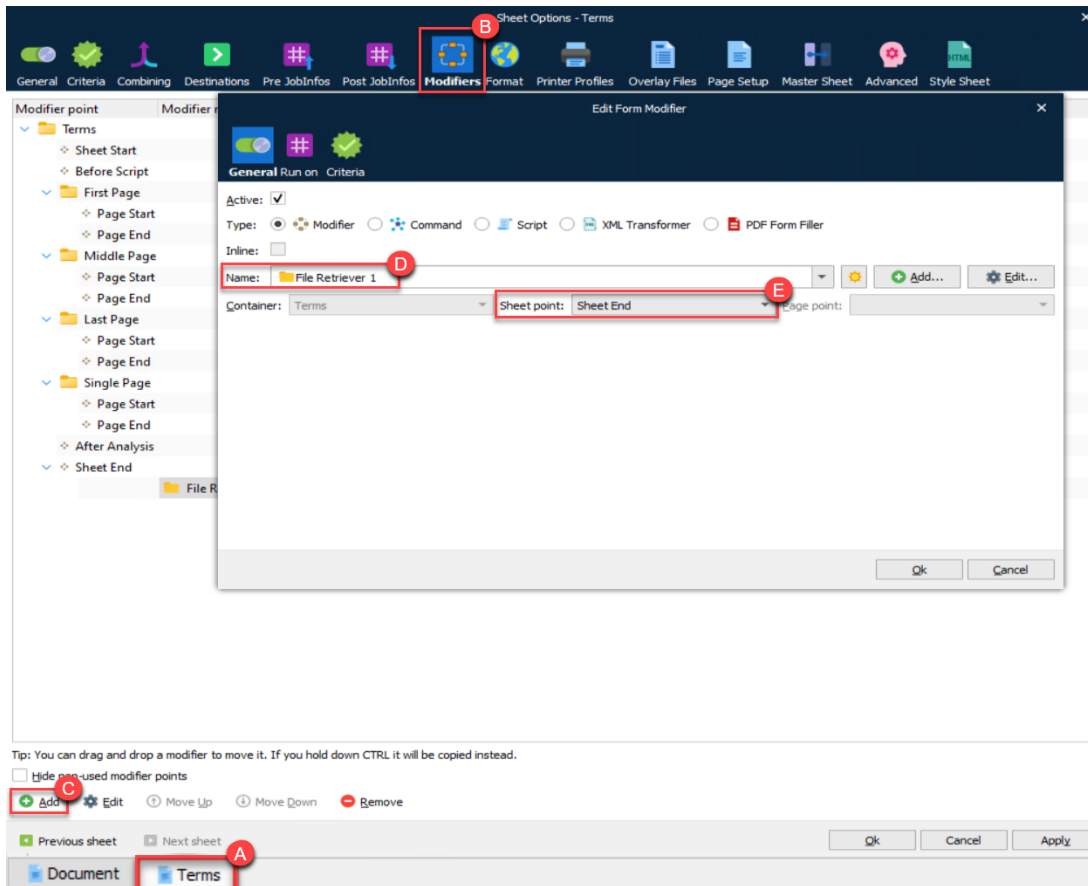
The value of the JobInfo needs to be the full filename including the extension, for example 'EFS T&C.Inemf'.



Add the File Retriever

To add the File Retriever module to the form and sheet:

1. Double-click the previously added sheet (A) and go to the **Modifiers** tab (B).
2. Click **Add** (C) and find the name of the module (D) within the drop-down list.
3. Set **Sheet point** as Sheet End (E).



4. Use Shift + F5 to run all the scripts on the form. You should see the following occurrences in progress, in the log:

- The JobInfo is set to store the name of the file to pick up, 'PickupFile'.
- The modifier is run at Sheet End.
- The JobData JobInfo is set to a binary data value not equal to 0;

The above indicates that the file has been picked up and stored in the JobInfo.

Log (System, Error, Transaction, Job, JobInfo, Custom)

Close Search: Filter Save

Type	Time	Message
JobInfo	18/10/2017 09:54	Set JobInfo PickupFile[0] = EFS T&C.lnemf
JobInfo	18/10/2017 09:54	Set JobInfo Link[0] = 0
JobInfo	18/10/2017 09:54	Set JobInfo NumberOfPages[0] = 1
JobInfo	18/10/2017 09:54	Set JobInfo CurrentPage[0] = 1
Job	18/10/2017 09:54	Sheet end: Running modifier 'Pickup File for Forms'
JobInfo	18/10/2017 09:54	Set JobInfo JobData[0] = [binary data (108677)]
Job	18/10/2017 09:54	108677 bytes retrieved from file:C:\Program Files\EFS\EFS T&C.lnemf

Note

If required, the process can be repeated to allow for multiple sheets and for multiple different overlays to be used at the same time.

Combining the Terms and Conditions

The newly created sheet is picking up an overlay file and storing it in the JobData JobInfo. This sheet must be combined with the existing sheets to generate the desired output PDF.

Depending on the number of the other sheets in your system, there are a few options available, but sheets must be combined in a PDF Engine.

Note

It is best practice to have a separate PDF Engine for any combining.

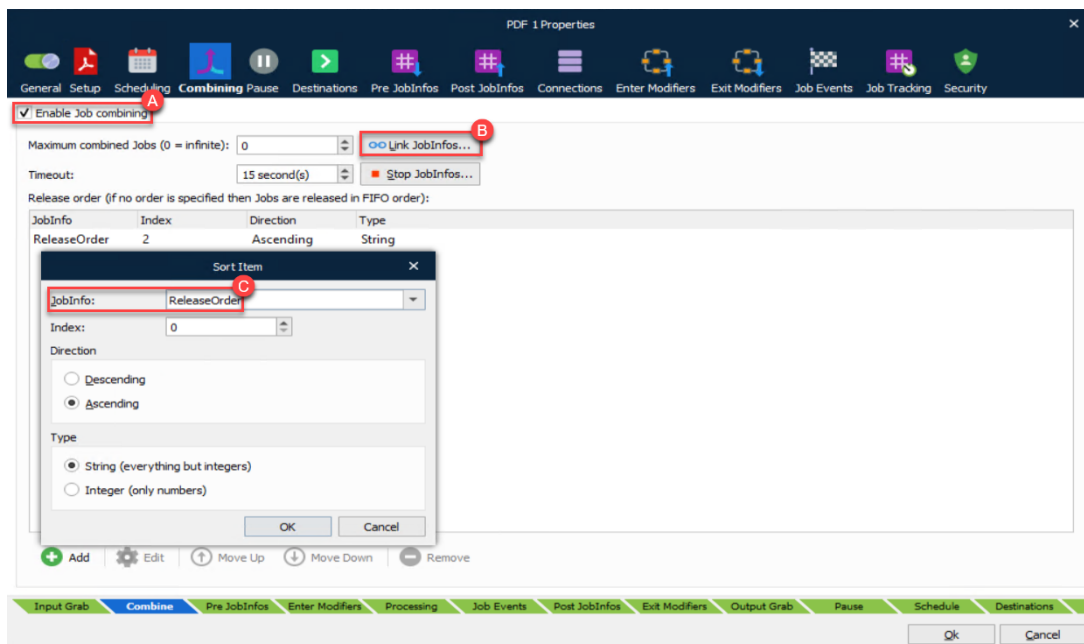
To combine your sheet with the Terms and Conditions, follow these steps:

1. Find the PDF module in the Engine module list and double-click to add it to your build.
2. Give the module a sensible name and navigate to the Combining tab.
3. check the **Enable job combining** (A) checkbox.

Note

A Link Jobinfo must be created to make sure the documents are combined as expected.

4. Click the **Link Jobinfos** (B).
5. Give the name of a JobInfo (C) that links the Terms and Conditions sheet with the other sheets in your form. For example, 'Order Number' and system JobInfo 'RecognizedForm' would be a good combination.



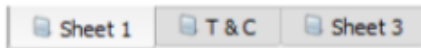
Note

It is also recommended to add in a released order JobInfo. This will ensure that the sheets are combined in the expected order. Creating a JobInfo 'ReleaseOrder' on all sheets and giving them a value dictating the order of combination is a good idea, for instance, Sheet 1 = #1, T&c = #2, Sheet 3 = #3, etc.

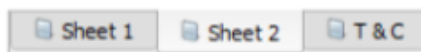
If you have more than two sheets, try to combine the non-terms and conditions within the form using sheet combining and then direct the sheets to the PDF. See the following image for a further explanation.



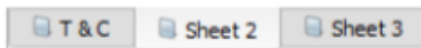
Combine in the PDF Engine



Combine in the PDF Engine



**Combine Sheet 1 & 2 in the form
Send Sheet 1 and T & C to the PDF
Engine for combining**



**Combine Sheet 2 & 3 in the form
Send Sheet 1 and T & C to the PDF
Engine for combining**

6. Update the Lasernet service and pass in an input file. The output should now produce a PDF that has picked up the Terms and Conditions and added it in with the input data.