

Create DOCX Output

Alex Pearce - 2024-03-18 - Comments (0) - Lasernet Form Editor 9 - Rich Text and Spreadsheet

Lasernet

The DOCX format is an output format used for creating an output. The Forms Engine retrieves data from the input file, processes it and adds defined fields to the output along with static elements and text added by a user while modifying the output in the Editor.

As an input, the DataSet format is always used.

Dealing with an output of the DOCX format, you can use a Microsoft Word type interface.

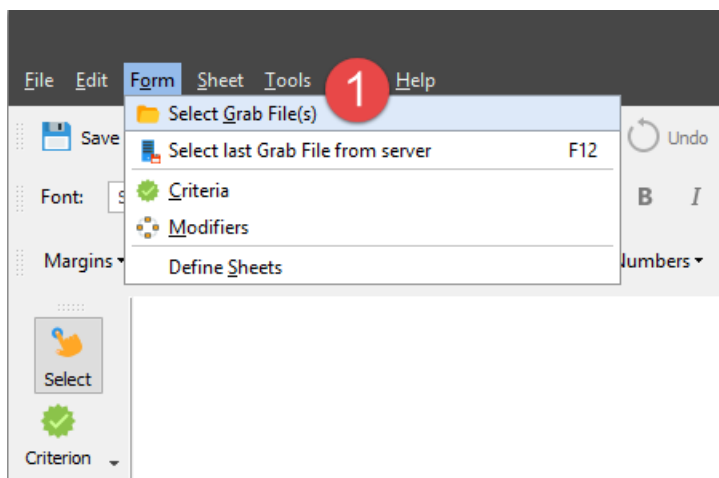
In this exercise, you are proposed to create an output in the DOCX format.

Exercise

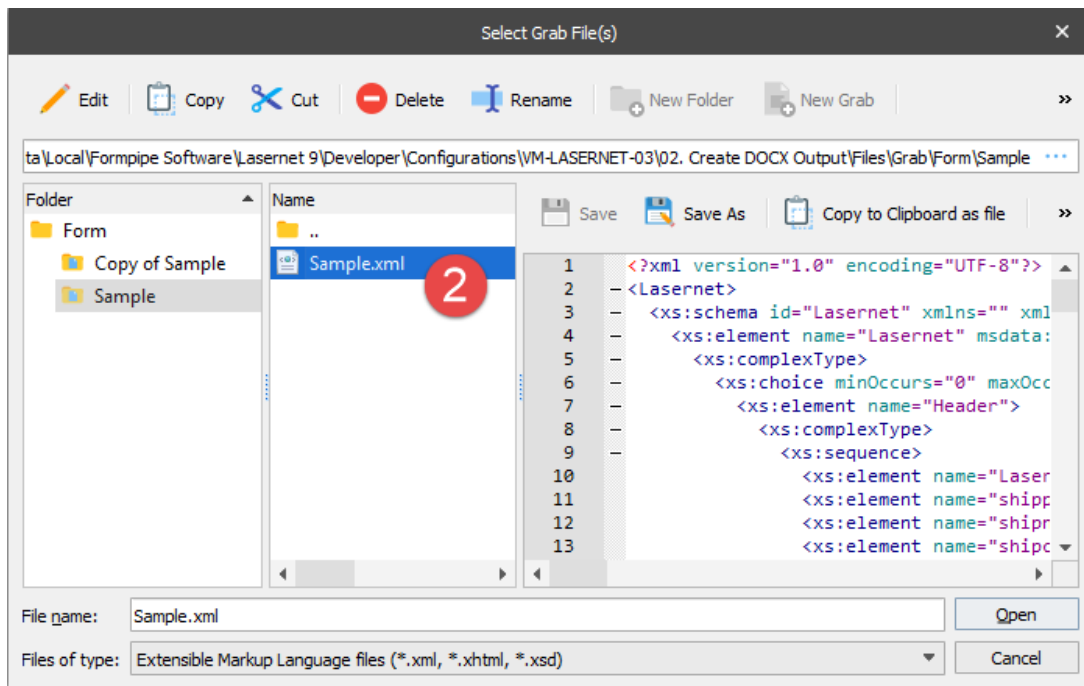
Download and import the attached configuration called **02. Create DOCX Output** in Lasernet Developer 9. Afterwards, go to the **Forms** section and open the **Sample** form.

To create an output of the DOCX format, follow the steps listed below:

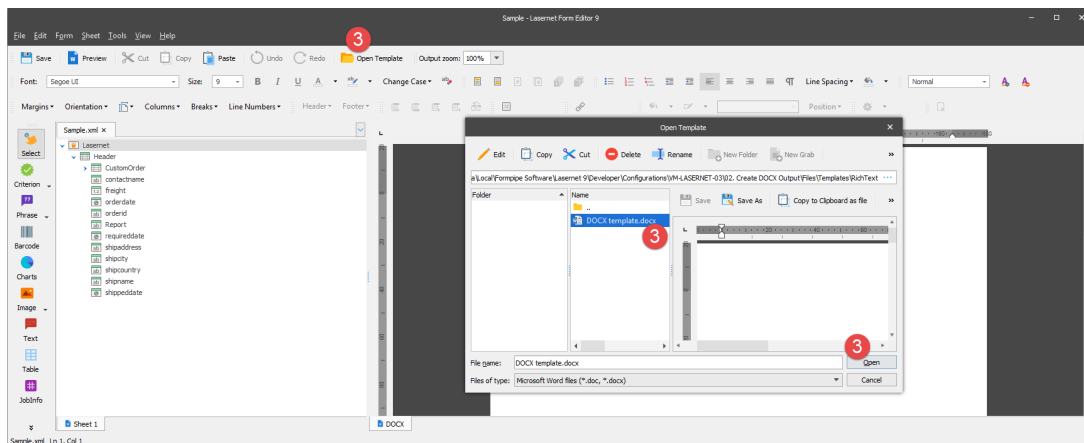
1. Open a grab file named **Sample**. To this end, first, on the **Form** menu, click **Select Grab File(s)**.



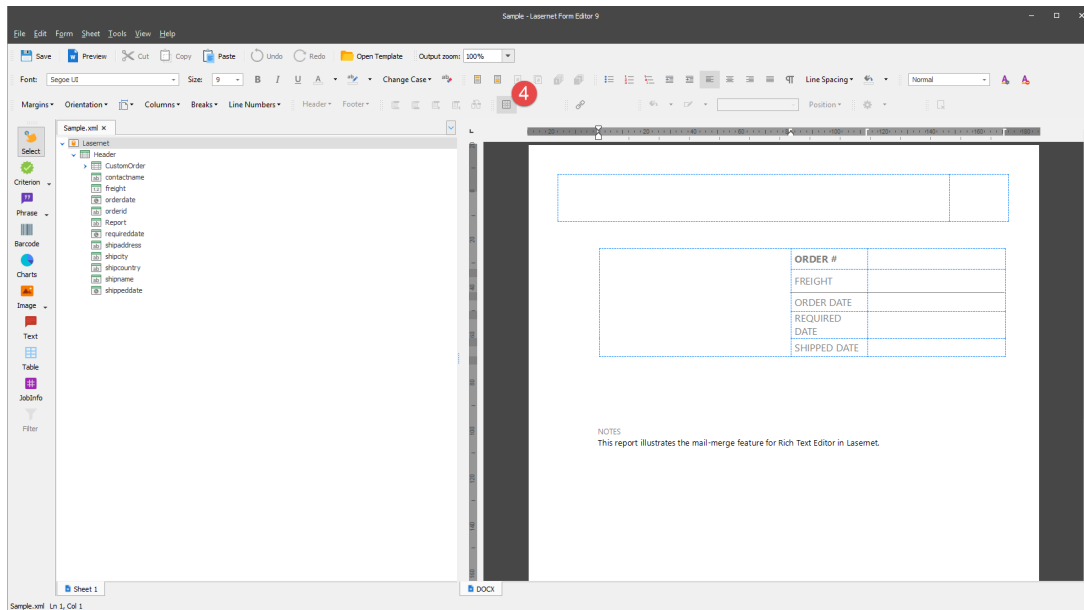
2. In the **Select Grab File(s)** dialog that opens, select the **Sample** file, and then click **Open**.



3. Open a template based on which you want to create the output. To this end, click **Open Template**, select the one from the list, and then click **Open**.



4. Start creating your output document. First, click the **View Gridlines** button to show lines of all grids available in the output. It could make formatting the document easier.

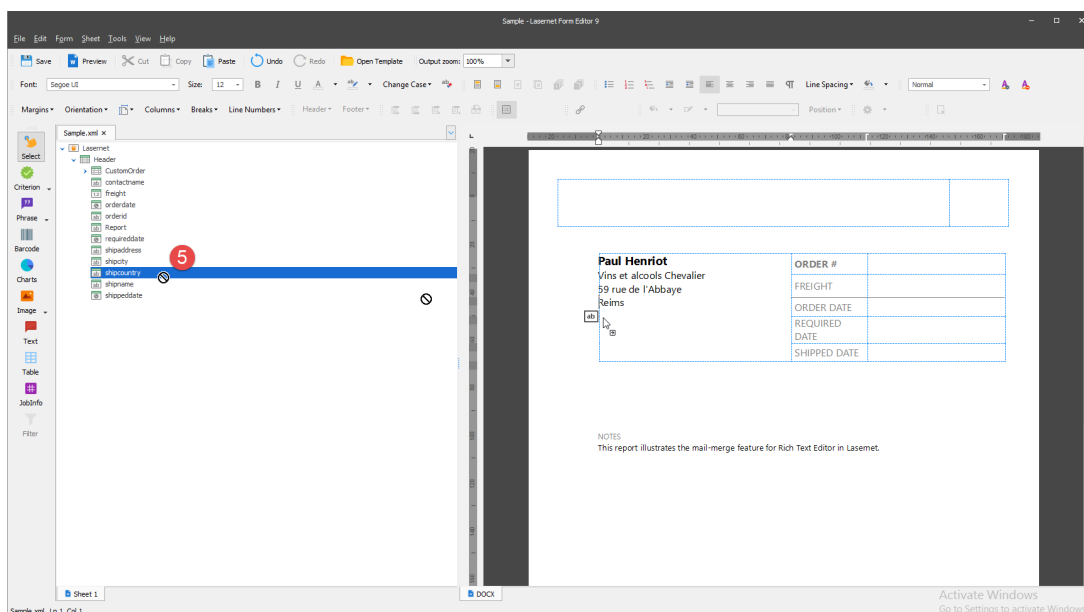


5. Add fields from the input to the output by dragging them. Add the following fields in the order specified below:

- contactname
- shipname
- shipaddress
- shipcity
- shipcountry

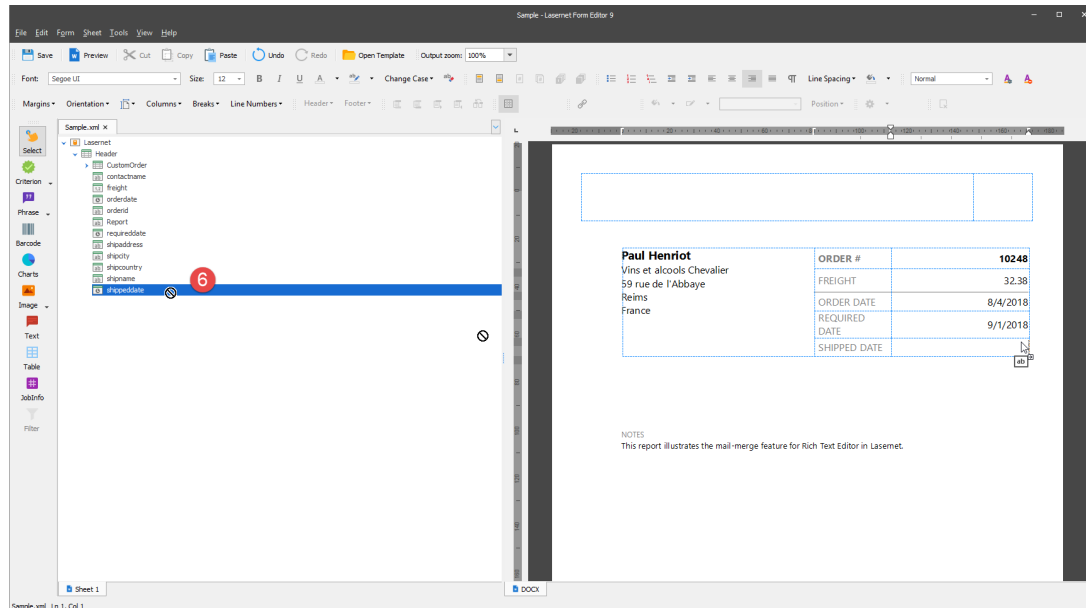
Once done, make sure that the following font styles are specified for the added lines:

- the **contactname** line: **Segoe UI, 14 pt, Bold;**
- the rest lines: **Segoe UI, 12 pt.**



6. Add data for such fields as ORDER #, FREIGHT, ORDER DATE, REQUIRED DATE and SHIPPED DATE. Once done, make sure that the following font styles are specified for the

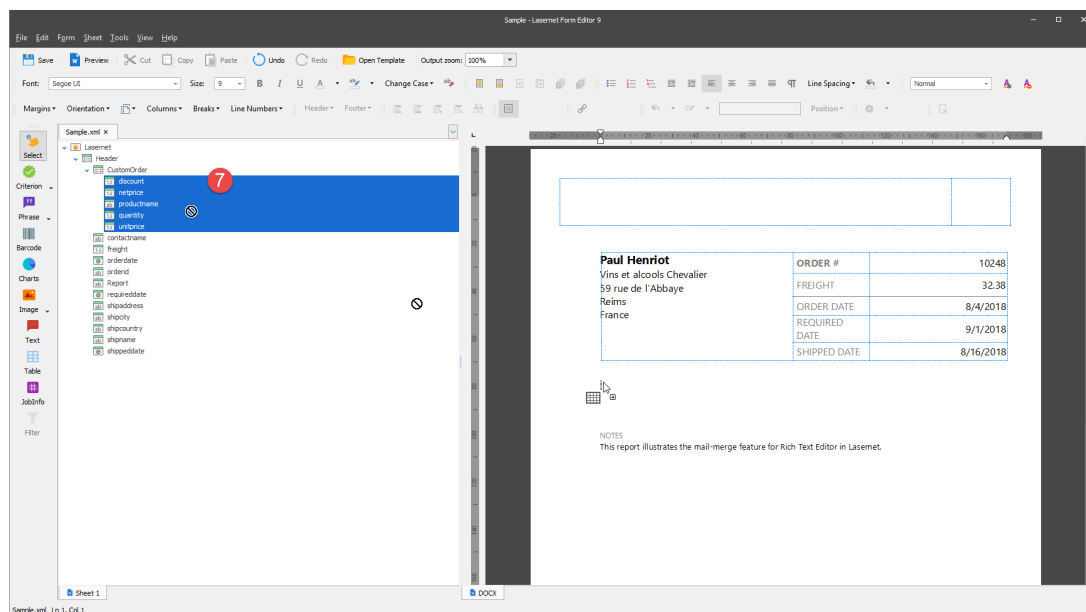
added lines:



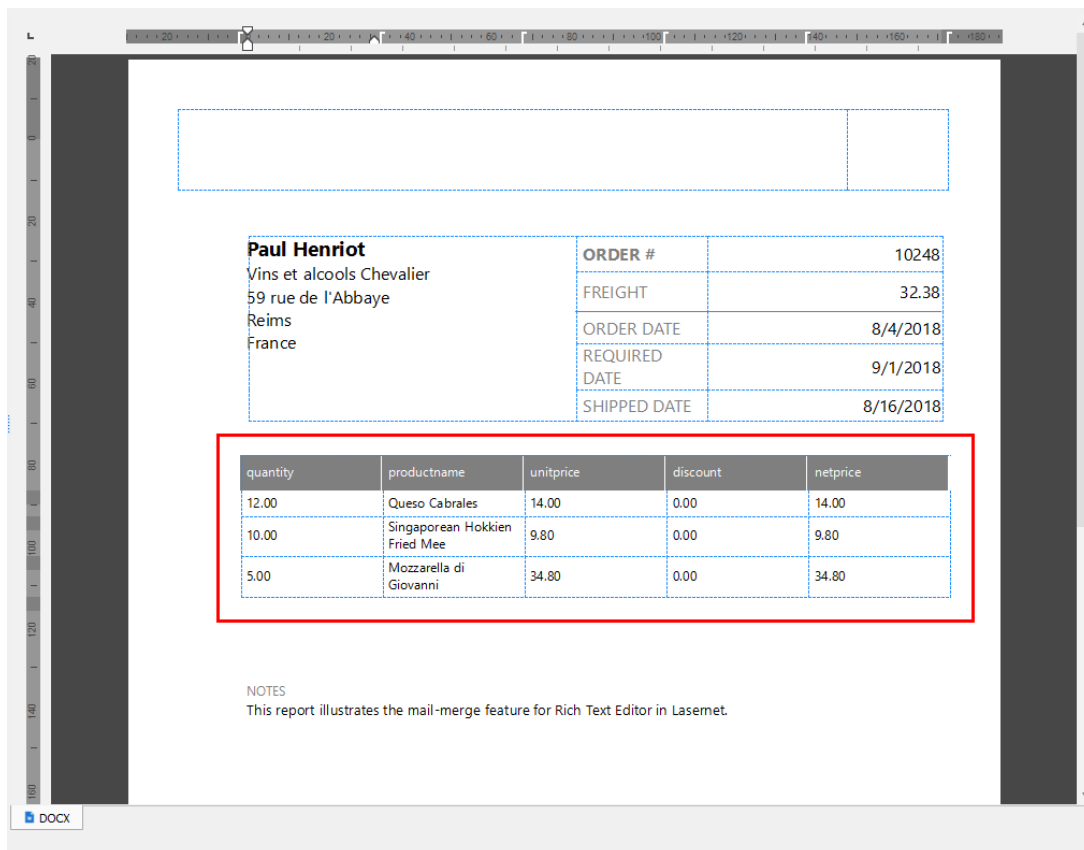
- the ORDER line: **Segoe UI, 12 pt, Bold;**
- the rest lines: **Segoe UI, 12 pt.**

7. You can then drag fields belonging to the nested table. To this end, select the required fields on the nested table by holding down the **CTRL** key while clicking your mouse button on each field you want to add in the required order. The following order is proposed:

- quantity
- productname
- unitprice
- discount
- netprice



Those fields are then added to the output in the order you have selected them.



You are now proposed to format the table using the required tools on the toolbar as well as commands of the context menu which appears by right-clicking the table, so the table looks like it is shown on the picture below:

Right click > Table Properties > Borders and Shading to set the colors and styles for **Border** and **Shading**.

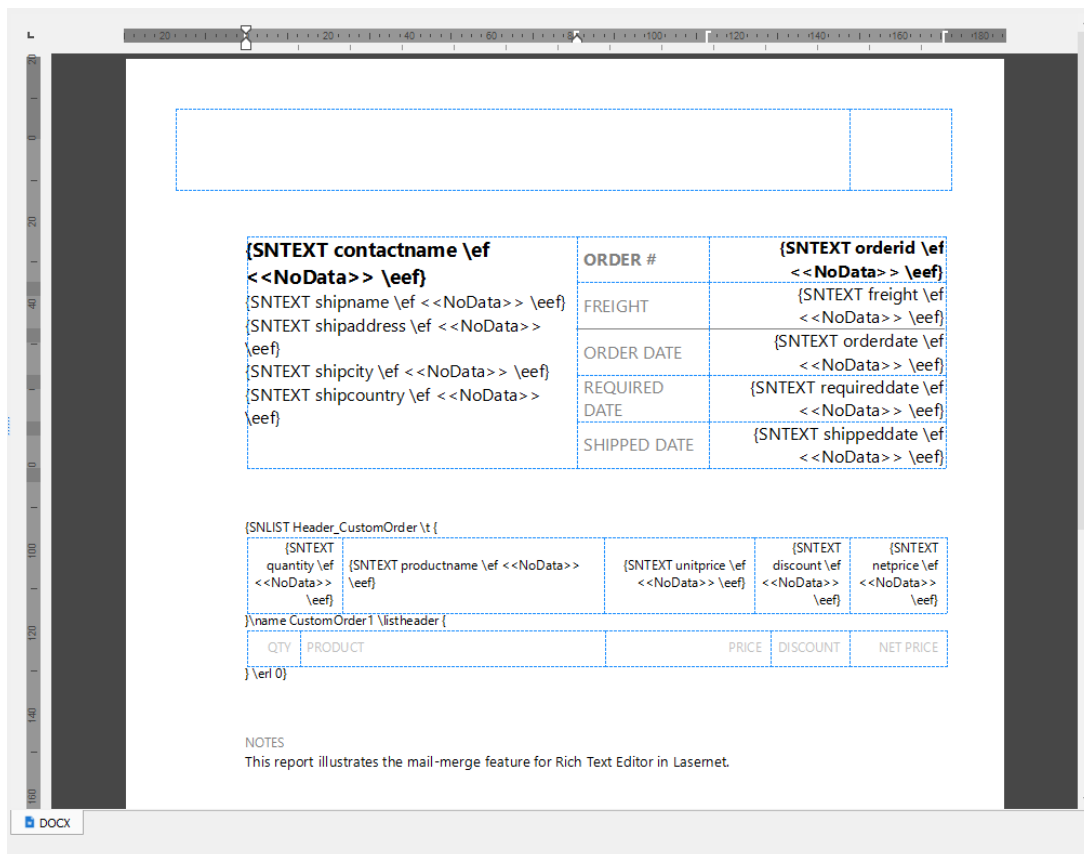
Right click > Font to set the colors and styles for **Font and Styles**.

Paul Henriot Vins et alcools Chevalier 59 rue de l'Abbaye Reims France		ORDER # 10248	10248
		FREIGHT	32.38
		ORDER DATE	8/4/2018
		REQUIRED DATE	9/1/2018
		SHIPPED DATE	8/16/2018

QTY	PRODUCT	PRICE	DISCOUNT	NET PRICE
12.00	Queso Cabrales	14.00	0.00	14.00
10.00	Singaporean Hokkien Fried Mee	9.80	0.00	9.80
5.00	Mozzarella di Giovanni	34.80	0.00	34.80

NOTES
This report illustrates the mail-merge feature for Rich Text Editor in Lasernet.

As it was stated above, some data of the output is based on the fields of the input. Making all code fields visible in your output allows you to learn which data in the output is based on the input data. It can make creating and editing a report easier. To activate this mode, press **ALT+F9**. Your output can look then as follows:



If you want to show field code for a definite item, right-click the item, and then click **Toggle Field Codes** on the context menu that appears. The rest code fields available in the output are not then shown, but the selected one.

Attachments

- [02.-Create-DOCX-Output.Inconfigx \(1.89 MB\)](#)