

Barcodes

Alex Pearce - 2024-03-18 - Comments (0) - Lasetnet Form Editor 9 - Designing Forms

Lasetnet

The Barcode tool works the same way as the Rearrange tool. When you select data, the barcode object becomes visible in the form on the right-hand side, and you can position it to fit your form requirements. You can insert Barcodes via TrueType fonts, as graphics or driver fonts. This exercise focuses on built-in Barcodes only.

Symbology Barcodes: based on the 3rd party TrueType fonts (not included in the software package).

Built-in Barcodes: a range of linear and 2D barcodes inserted as images and included as a standard feature.

Driver fonts: in Windows printer drivers for the thermal printers, you can add and maintain linear or 2D barcodes supported by the supplier of the thermal printer. The barcode is created in the printer driver and translated into the printer specific language code supported by the thermal printer.

Lasetnet 9 support the following list of barcodes:

Linear Barcodes: Code 128, Code 39, Code 93, Codabar, Interleaved 2 of 5, POSTNET, UPC, EAN

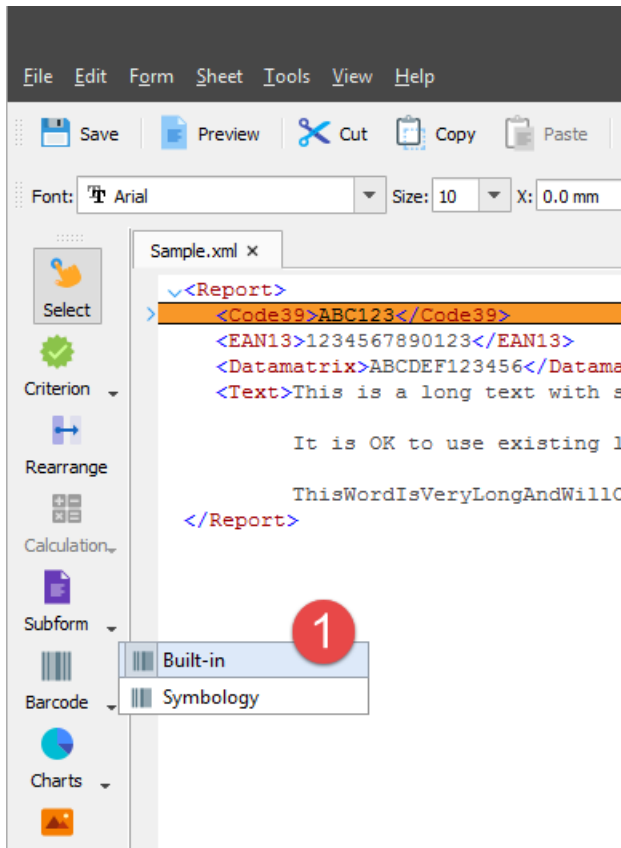
2D Barcodes: Data Matrix, MaxiCode, PDF417, QR-Code

Info: An enhanced range of barcodes are supported in the Rich Text Editor.

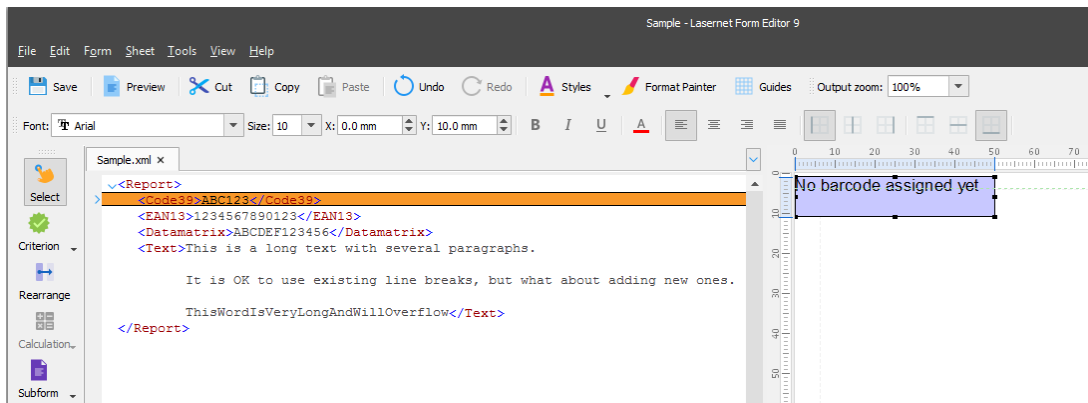
Exercise

Download and import the attached configuration called **13. Barcodes** in **Lasetnet Developer 9**. Afterwards, go to the **Forms** section, and then open the **Sample** form.

1. On the **Developer** toolbar, click the **Barcode** button, and then click **Built-in**.

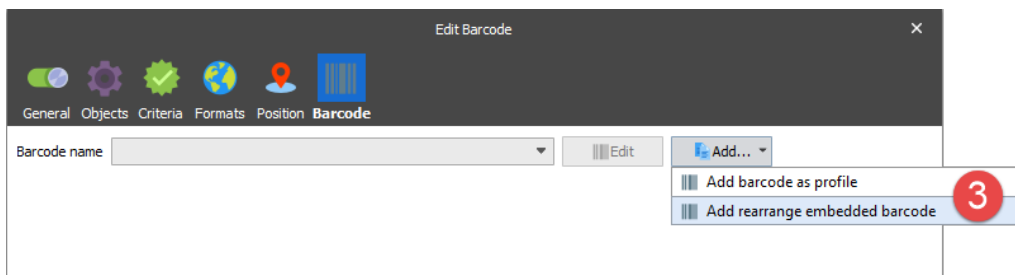


2. In the XML data area, click the **/Report/Code39** node.



A barcode object containing the **No barcode assign yet** text is added to the form.

3. Edit the properties of the **Barcode** object. To this end, on the **Barcode** tab of the **Edit Barcode** dialog, click **Add...**, and then click **Add rearrange embedded barcode**. This selection allows adding a barcode only for the Barcode object for which the settings are available.

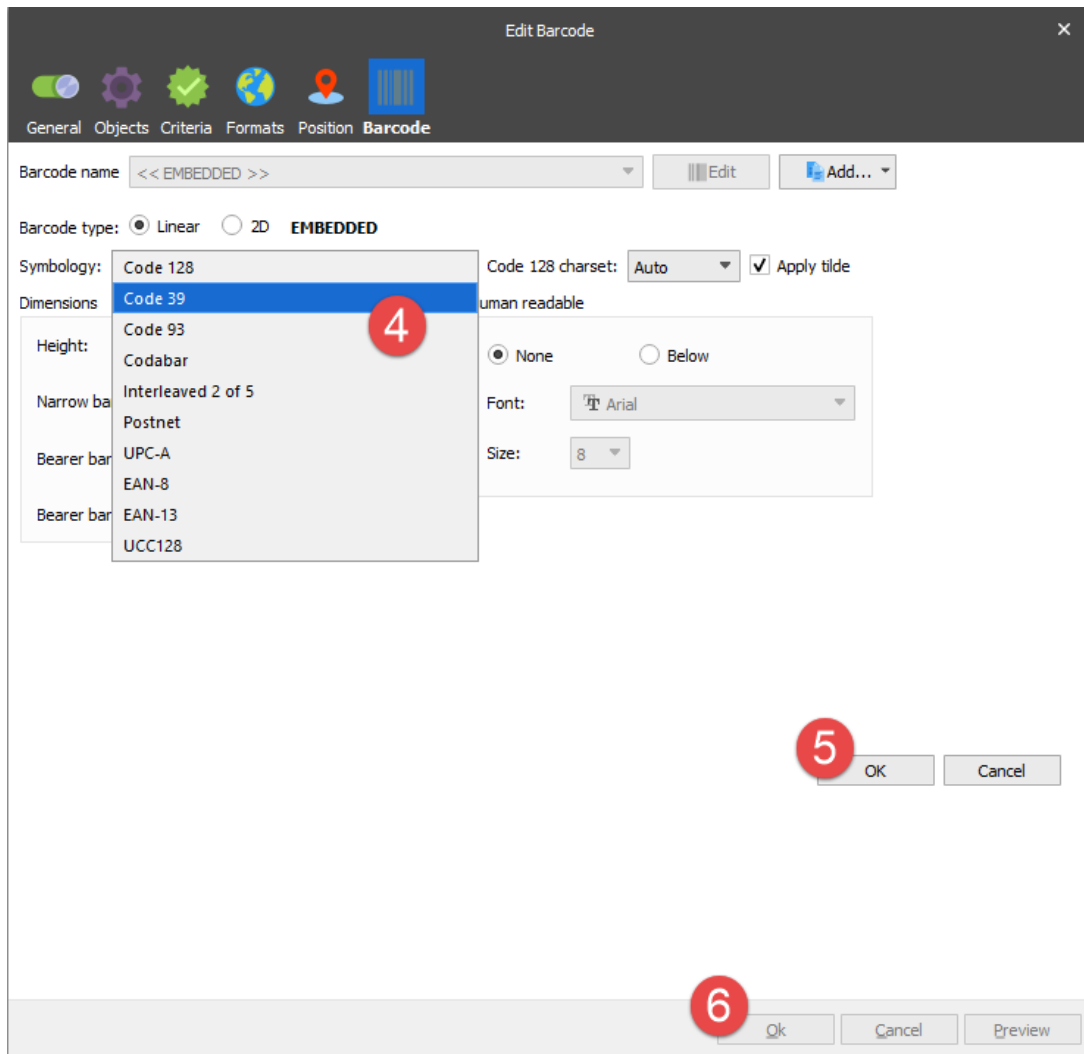


Note: By selecting **Add barcode as profile**, you can create a global Barcode profile that can be added to the other forms. If you change the settings in your Barcode profile, it effects the other forms which use the same Barcode profile as master.

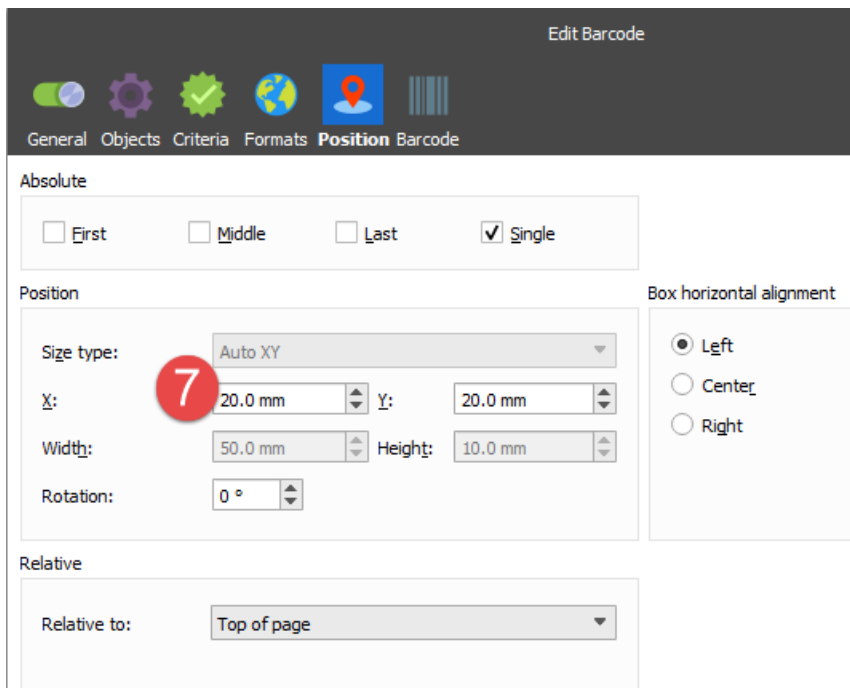
4. Afterwards, set **Symbology** to **Code 39**.

5. Click **Ok** to save changes for the barcode settings of the current Barcode object.

6. And then click **Ok** to confirm all the specified settings.



7. On the **Position** tab of the **Edit Barcode** dialog, set the **X** position to **20 mm** and **Y** to **20 mm**.



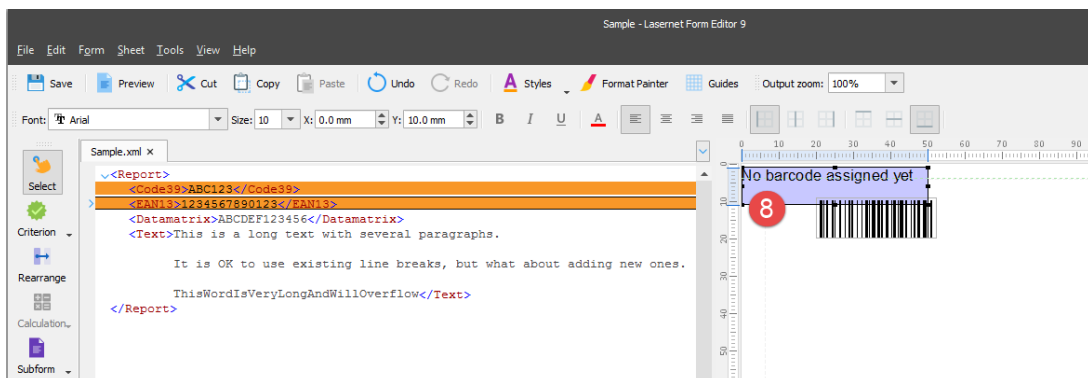
Note: X is a left position and Y is a bottom position (baseline) for a barcode.

You have now added a barcode to the output view.



8. On the **Developer** toolbar, click the **Barcode** button, then click **Built-in**, and then click the **/Report/EAN13** node in the input data area.

One more barcode object with the **No barcode assign yet** text is now added to the form.



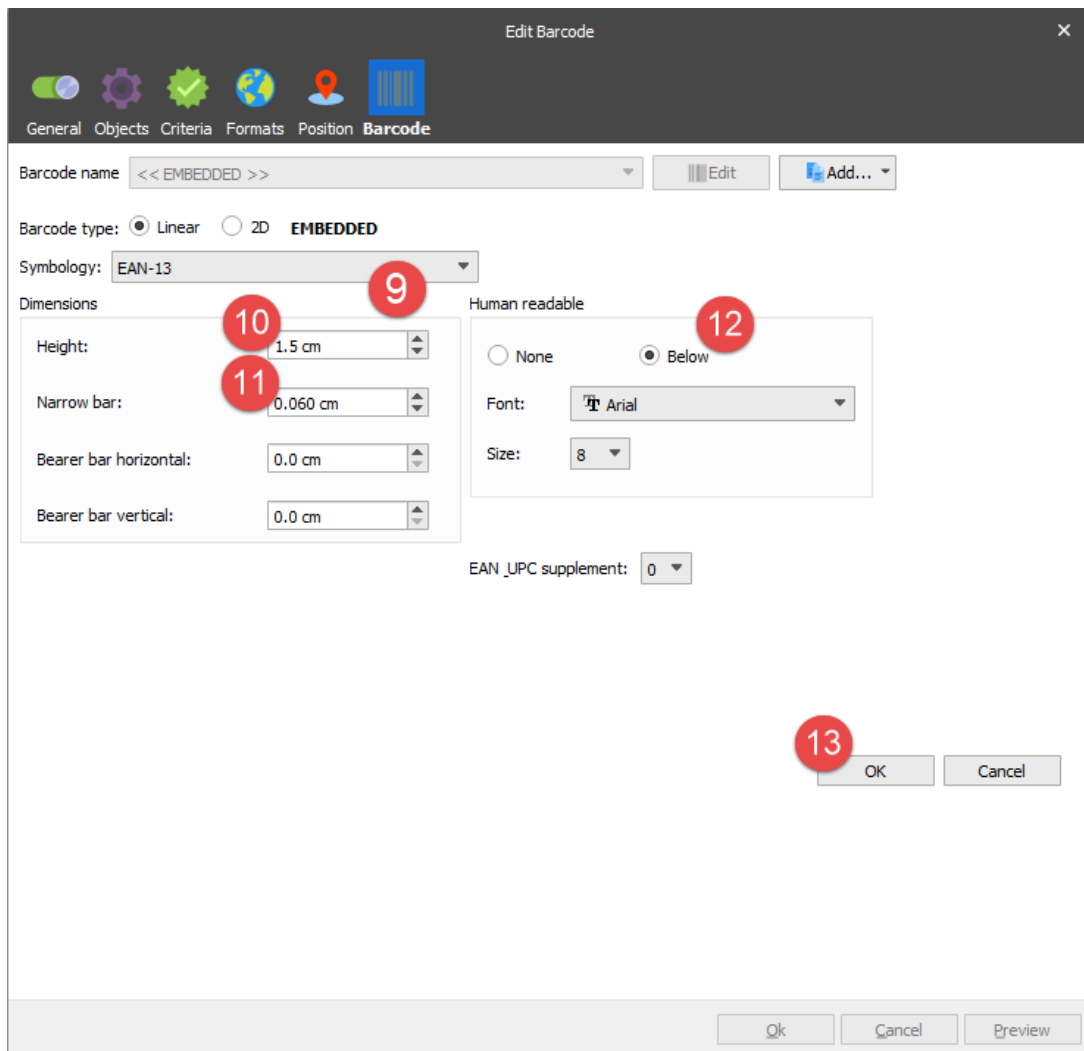
9. On the **Barcode** tab of the **Edit Barcode** dialog, click **Add...**, and then click **Add rearrange embedded barcode**. Set **Symbology** to **EAN-13**.

10. Set **Height** to **1.5 cm**.

11. Set **Narrow bar** to **0.06 cm**.

12. On the **Human Readable** group box, select the **Below** check box. Afterwards, set **Font type** to **Arial** and **Size** to **8 pt**. Now you can read the inherent content in the data below the barcode.

13. Click **Ok** to confirm changes.



14. Set the **X** position to **20 mm** and **Y** to **45 mm**.

Edit Barcode

General Objects Criteria Formats **Position Barcode**

Absolute

First Middle Last Single

Position

Size type: Auto XY

X: 14 20.0 mm Y: 45.0 mm

Width: 50.0 mm Height: 10.0 mm

Rotation: 0 °

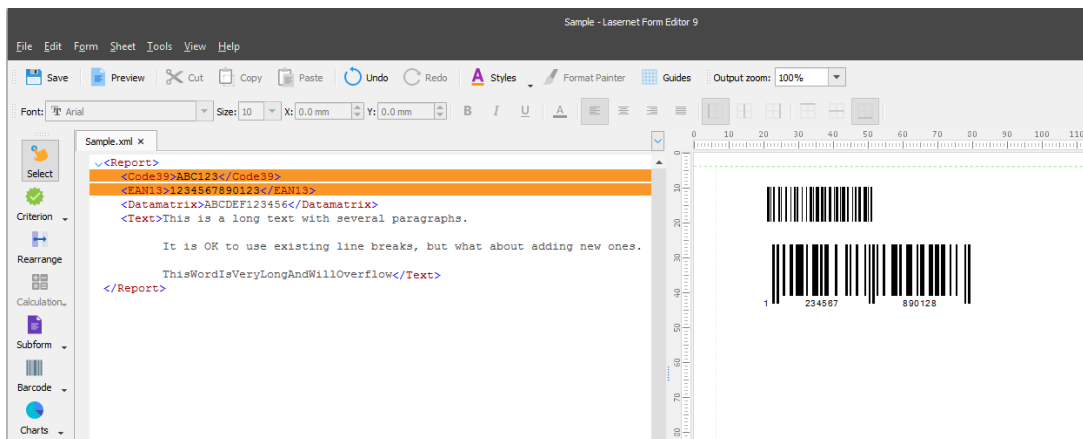
Box horizontal alignment

Left
 Center
 Right

Relative

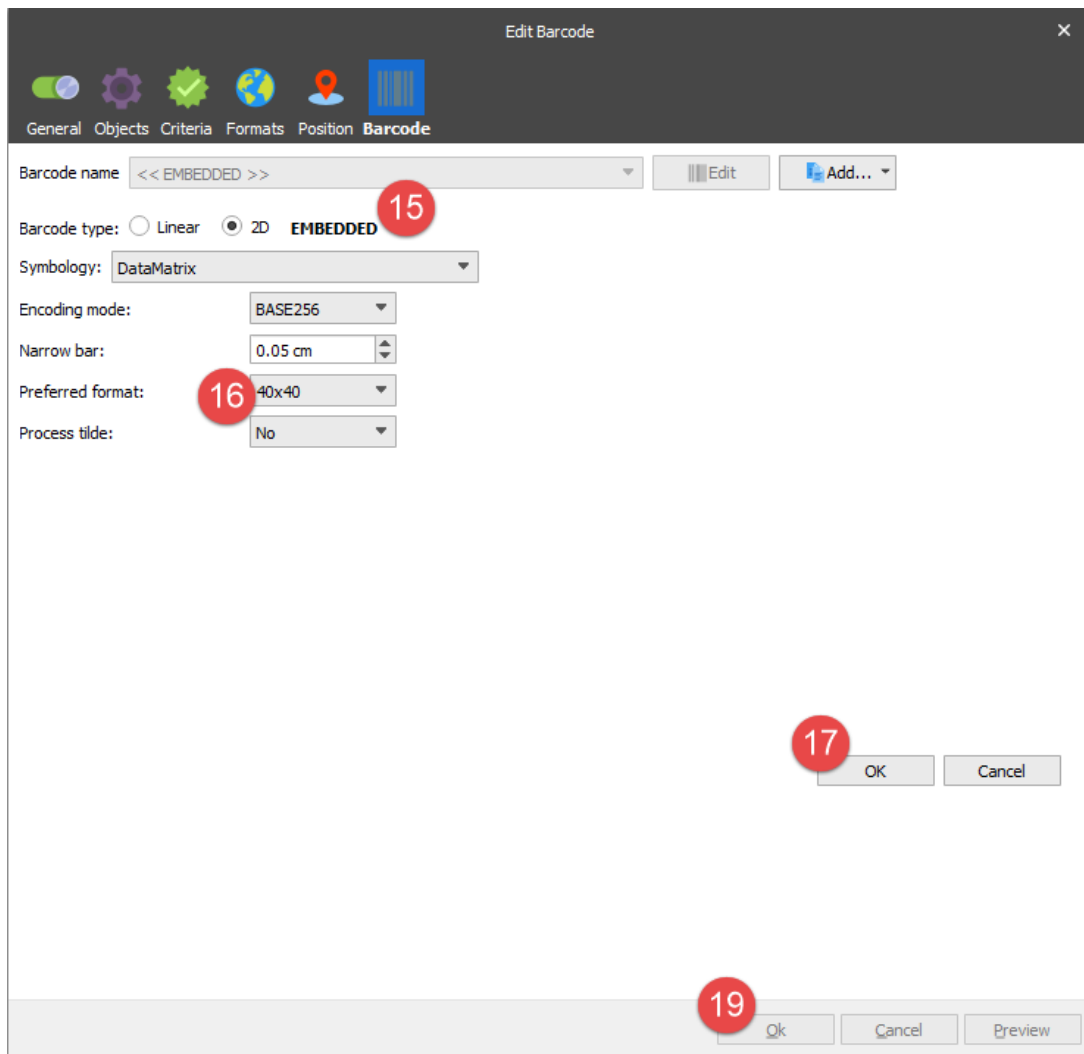
Relative to: Top of page

An **EAN13** barcode containing a human readable text is inserted in the form.

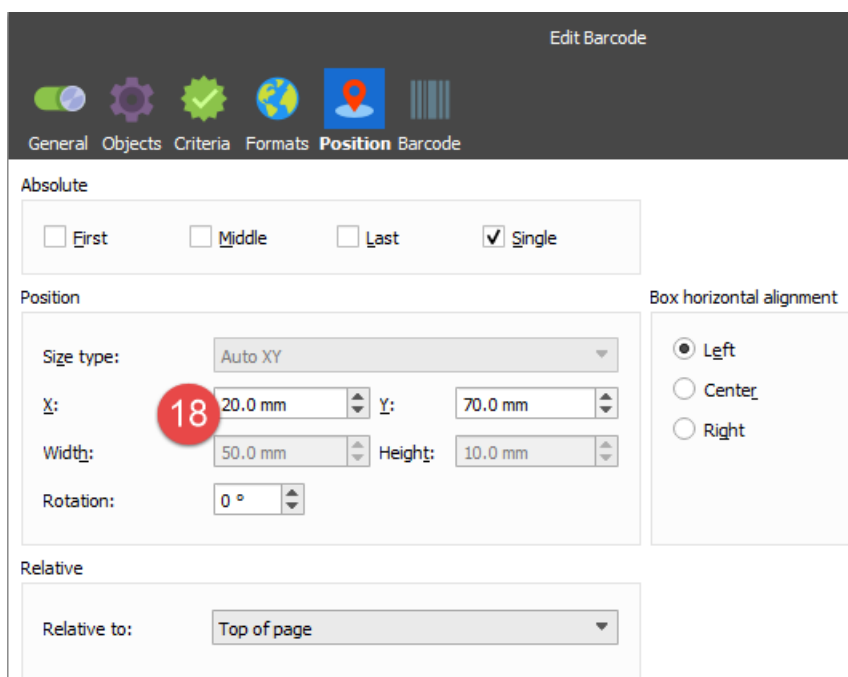


Let's proceed with the following steps to add barcodes with 2 dimensions.

15. Add a **built-in barcode** for the **/Report/Datamatrix** node. On the **Barcode** tab of the **Edit Barcode** dialog, click **Add...**, and then click **Add rearrange embedded barcode**. Set **Barcode type** to **2D**.
16. Set **Preferred format** to **40x40**.
17. Click **Ok** to accept barcode settings.

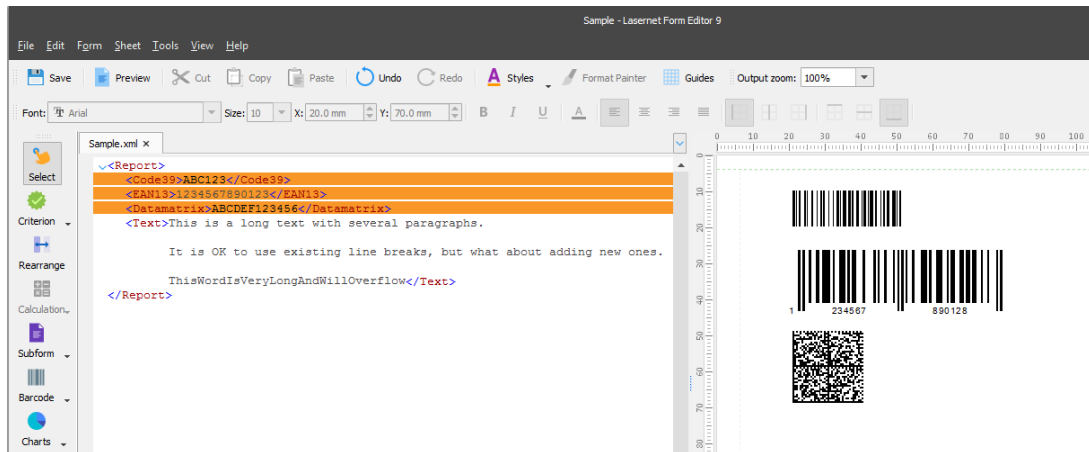


18. On the **Position** tab of the **Edit Barcode** dialog, set the **X** position to **20 mm** and **Y** to **70 mm**.



19. Click **Ok** to accept new position settings for the barcode.

A **2D barcode** is inserted to the form.



20. Add a **2D QRCode** barcode similar to the one you have added following the steps listed above.

Four barcodes are added to the form: Two linear barcodes and two 2D barcodes.

Note: You can read more about Lasetnet barcodes in the following article: [AA-00229](#).

Attachments

- [13.-Barcodes.Inconfigx \(142.25 KB\)](#)