

Where can I find the Lاسernet logs?

Nicole Ojeda - 2022-12-13 - Comments (0) - Lاسernet FAQs

Lاسernet

The Lاسernet log files are called *LaserNet.lnlog* and, by default, 5 x 10mb of logs are retained. The Service Instance **%InstanceName%** is your Lاسernet instance name; normally it is called 'Default'.

The locations listed below are only the default locations for the logs:

Lاسernet 6.7: %ProgramData%\Formpipe Software\LaserNet v6.7**%InstanceName%**\LaserNet.lnlog

Lاسernet 7: %ProgramData%\Formpipe Software\LaserNet 7**%InstanceName%**\LaserNet.lnlog

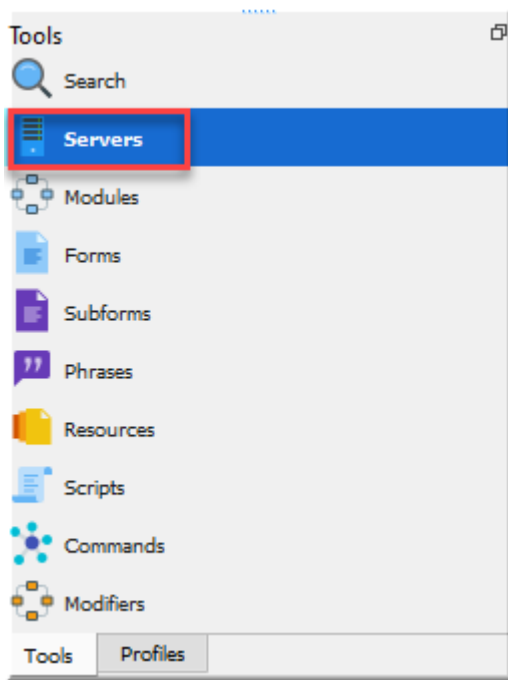
Lاسernet 8: %ProgramData%\Formpipe Software\LaserNet 8**%InstanceName%**\LaserNet.lnlog

Lاسernet 9: %ProgramData%\Formpipe Software\LaserNet 9\Service**%InstanceName%**\LaserNet.lnlog

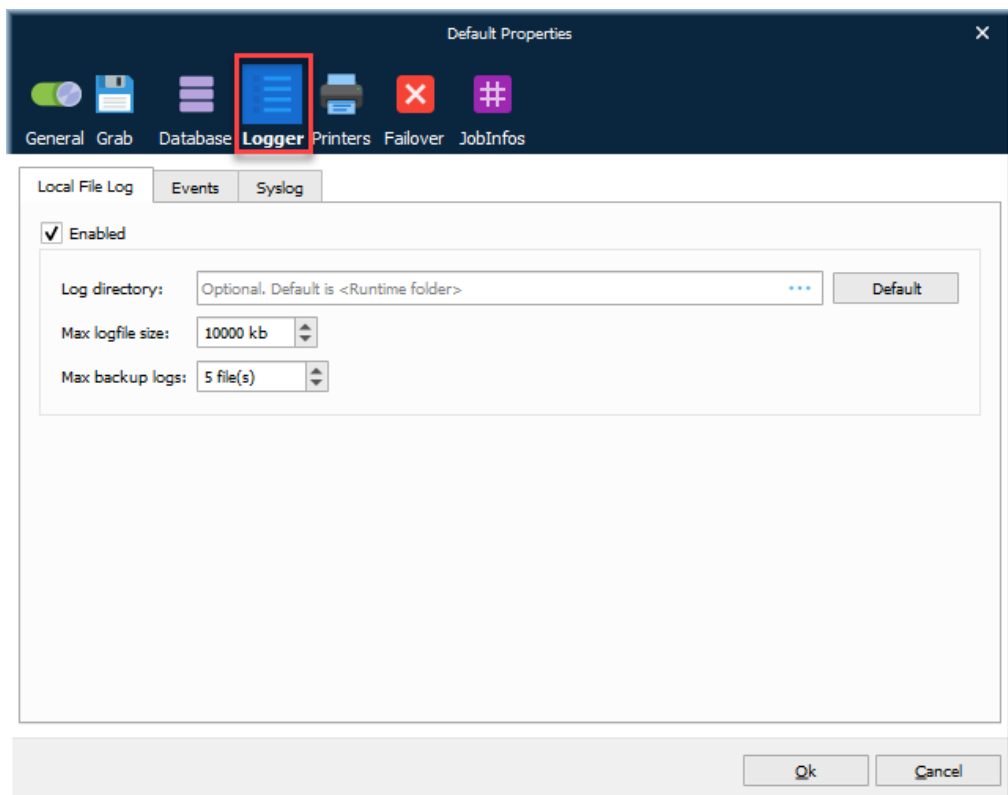
Lاسernet 10: %ProgramData%\Formpipe Software\LaserNet 10\Service**%InstanceName%**\LaserNet.lnlog

In order to choose your preferred location, follow these steps:

1. Open the build within Lاسernet and click the **Servers** tab on the Tools menu.



1. Double-click on the instance you're working on: the server's properties window will open on your screen.
2. Select the **Logger** tab in the ribbon.



3. In the **Log directory** field, select the ellipses button to choose a custom destination folder.

For older versions of Lasernet, double-click the **Properties** for the Instance Name on the left and then go to the **Logger** tab. The Log Directory should be where your logs are stored (if different from above).

Note

The installation paths might be different for users running the EFS versions.

Related Content

- [How to read Lasternet logs.](#)