

Rearrange Properties (Overflow)

Alex Pearce - 2024-03-18 - Comments (0) - Lasetnet Form Editor 9 - Designing Forms

Lasetnet

We are now looking at the settings with which we need to work to handle letters not fitting a rearrange box in the horizontal direction. When a word is too long, this work process takes place in the Auto Y and Manual modes.

- **Force Line Break** cuts a word as late as possible and then inserts a new line for the rest of the word.
- **Truncate** cuts a word as late as possible and hides the rest of the word.
- **Overflow** (default) allows a word overflowing the content box.

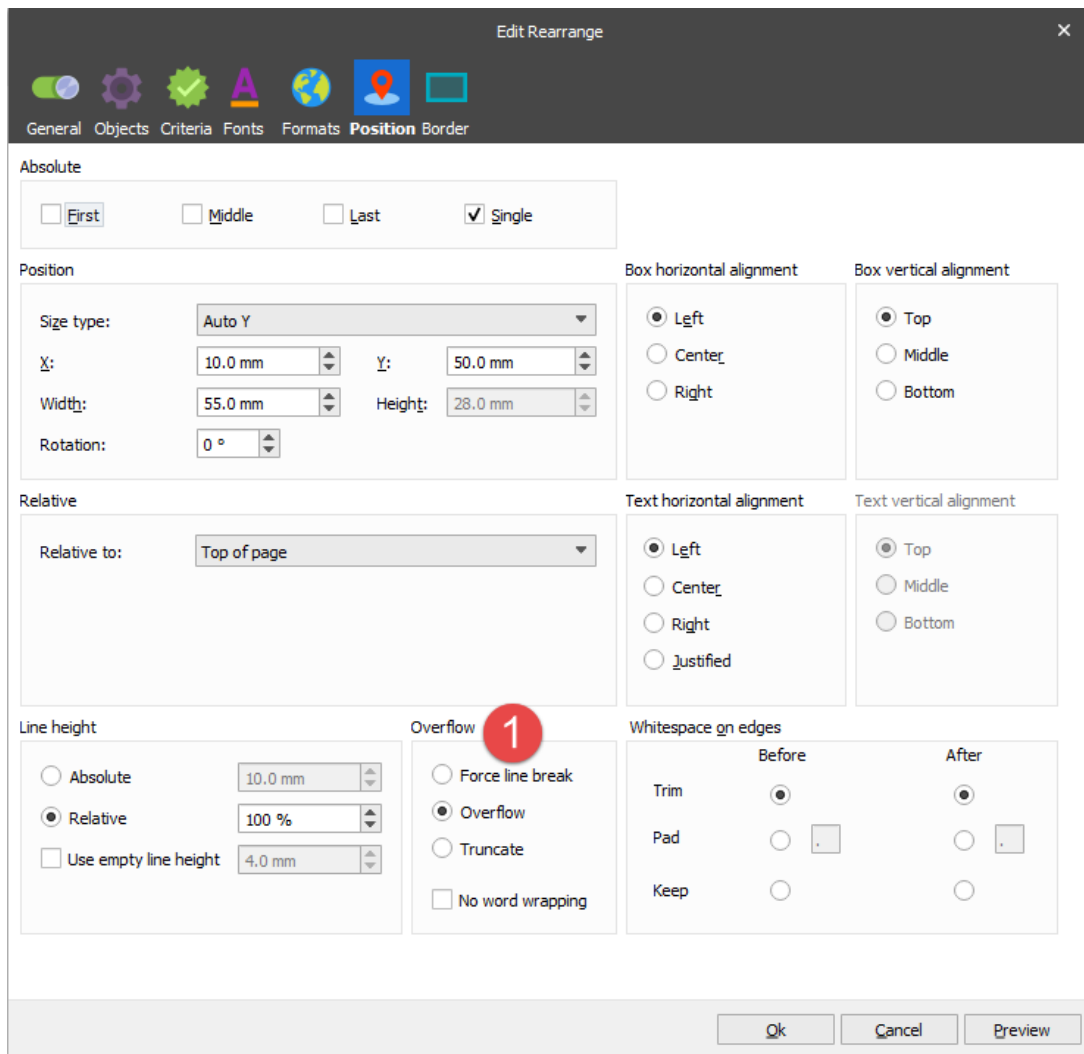
In all instances besides the scenario where we handle overflowing words, the word is first placed in a new line to give it as much space as possible.

Vertical overflow is handled by Auto XY/Auto Y (allowing any height) or Auto X/Manual (restricting height).

Exercise

First, download and import the attached configuration called **04. Rearrange Properties (Overflow)** in **Lasetnet Developer 9**. Afterward, go to the **Forms** section, and then open the **Sample** form.

1. By default, the **Overflow** property is set to **Overflow** allowing a word overflowing the content box.



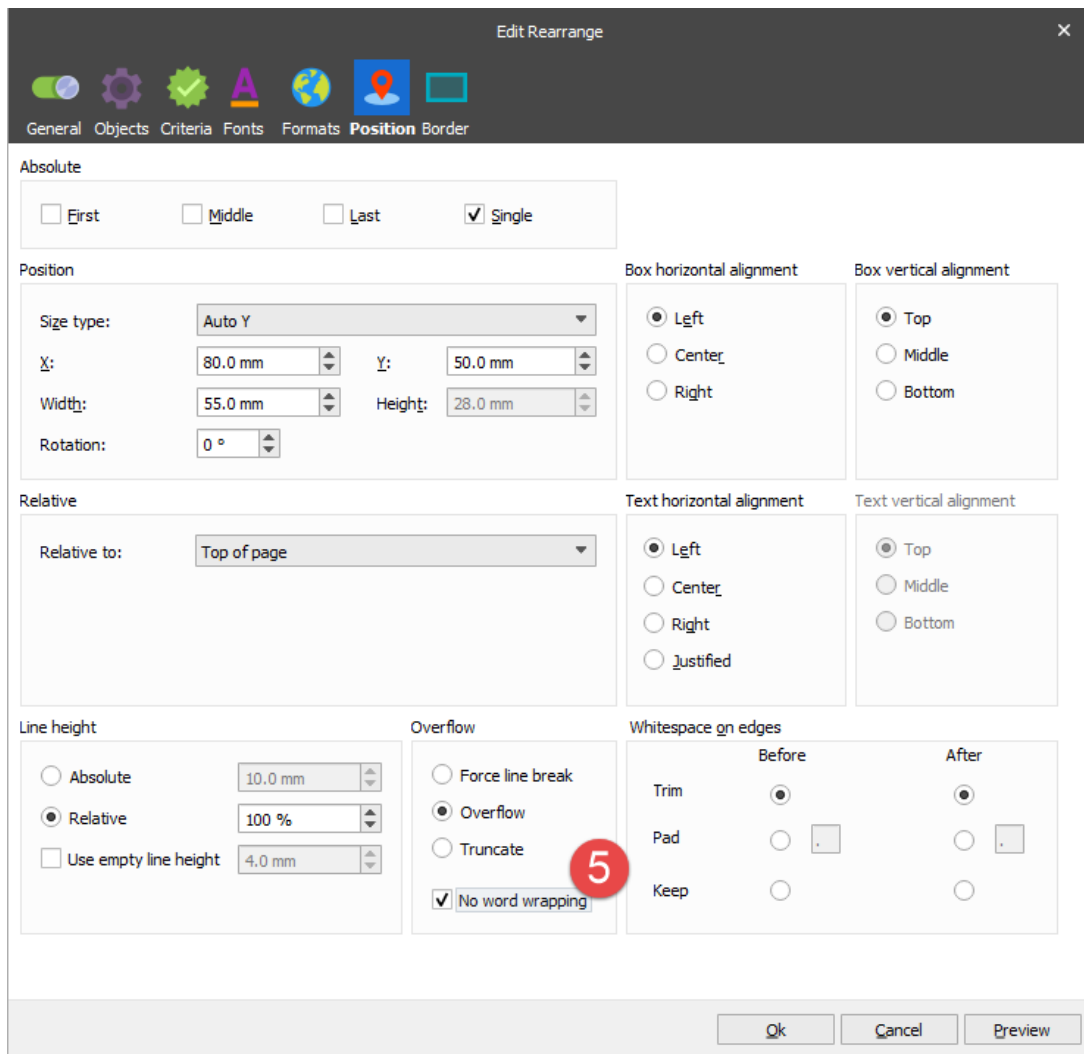
2. Add a copy of the Rearrange to the clipboard. To this end, right-click the Rearrange, and then select **Copy** in the context menu.

3. Paste a copy of the Rearrange from the clipboard. To this end, right-click anywhere in the output view, and then select **Paste** in the context menu. As a result, the Rearrange is inserted at the selected point.

Once you are done, edit the properties of the new Rearrange object by setting the **X** position to **80 mm** and the **Y** position to **50 mm**.

4. Edit properties of the recently added Rearrange.

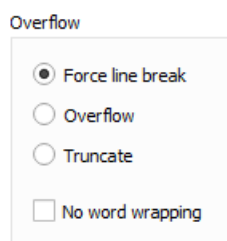
5. Select the **No word wrapping** check box to activate the setting, and then click **Ok** to apply it.



6. When the **No word wrapping** check box is selected, a word at the end of any line is allowed overflowing the content box.

Create 4 additional Rearranges by using **Copy/Paste**. Set new values for the **X/Y** position and the **Overflow** setting.

7. Set the **X** position to **10 mm** and **Y** to **85 mm**. For **Overflow**, select the **Force line break** radio button and clear the **No word wrapping** check box.



The **Force line break** setting allows wrapping the last word to the next line.

8. Set the **X** position to **80 mm** and **Y** to **85 mm**. For **Overflow**, select the **Force line break** radio button as well as the **No word wrapping** check box.

Overflow

Force line break

Overflow

Truncate

No word wrapping

When the **No word wrapping** check box is selected, the **Force Line Break** setting cuts the input line at the end of the Rearrange. It allows inserting as many new lines as required to fit the rest of the input line inside the box.

9. Set the **X** position to **10 mm** and **Y** to **125 mm**. For **Overflow**, select the **Truncate** radio button and clear the **No word wrapping** check box.

Overflow

Force line break

Overflow

Truncate

No word wrapping

Truncate cuts the word as late as possible and hides the last part.

10. Set the **X** position to **80 mm** and **Y** to **125 mm**. For **Overflow**, select the **Truncate** radio button as well as the **No word wrapping** check box.

Overflow

Force line break

Overflow

Truncate

No word wrapping

When the **No word wrapping** check box is selected, the **Truncate** setting cuts the input line at the edge of the Rearrange box and hides the rest of the line.

Attachments

- [04.-Rearrange-Properties-Overflow.Inconfigx \(40.18 KB\)](#)