

How to use the Mail Output module in Lاسernet for sending e-mails by Google Mail or Google Apps for Business

- 2023-07-12 - Comments (0) - Lاسernet Developer FAQs

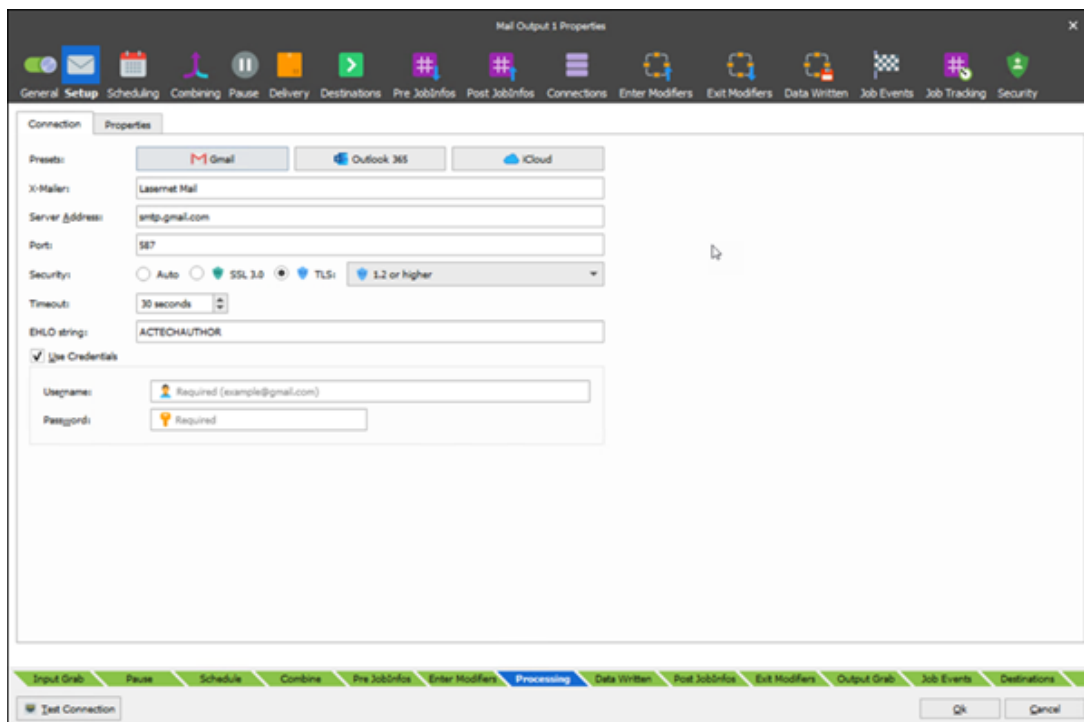
Lasernet

If you want to use the **Mail Output** module in Lاسernet to send e-mails by [Google GMail](#) or [Google Apps for Business](#) you will need to define the port in the correct way either using the SSL or TLS connection method. Both methods of connection (SSL or TLS) result in equally secure communications.

The following example shows how the configuration would look for the TLS connection using port 587. If you use instead SSL connection method then you would have to use port 465.

To view the Mail Output properties window, follow these steps:

1. In the *Object Box*, double-click the **Mail Output** module.
2. Ensure the **Connection** tab is selected.
3. Choose the appropriate settings.



4. Click the **Properties** tab and enter the appropriate details.

The screenshot shows the 'Mail Output 1 Properties' dialog box with the 'Properties' tab selected. The dialog has a top toolbar with icons for General, Setup, Scheduling, Combining, Pause, Delivery, Destinations, Pre JobInfo, Post JobInfo, Connections, Enter Modifiers, Exit Modifiers, Data Written, Job Events, Job Tracking, and Security. Below the toolbar, the 'Properties' tab is active, showing fields for 'From e-mail' (Name: Test User, Address: yourusername@gmail.com), 'Message Security (S/MIME)' (Sign and Encrypt checkboxes, with a note: 'Note: Valid certificates must be installed on the Lasernet server'), 'Read Request Type' (Return-Receipt-To and Disposition-Notification-To checkboxes), 'Miscellaneous' (Do not insert job data in an attachment, Auto dial Internet before connecting to mail server, and Validate e-mail address syntax checkboxes), and 'Importance' (Low, Normal, and High radio buttons). At the bottom, there is a 'Test Connection' button and 'OK' and 'Cancel' buttons.

You might need to activate access for less secure apps in the Gmail settings.

Related Content

- [How to force ContentType - Charset in Mails into UTF-8](#)