

Calculations

Alex Pearce - 2024-03-18 - Comments (0) - Lasetnet Form Editor 9 - Designing Forms

Lasetnet

With the **Calculation** tool, you can insert calculations in the Conditional Area. In this exercise, we are going to make a focus on subtotals and sum of all item lines.

Sum: Generates a rearrange script in the output calculating the sum of all values of the Conditional Rearrange. The rearrange is inserted after the Conditional Area enabled for the current page type.

Subtotal Current Page: Generates a rearrange script in the output calculating the sum of all values of the Conditional Rearrange on all pages up to and including the current page. The rearrange is inserted after the Conditional Area enabled for the current page type.

Subtotal Previous Page: Generates a rearrange script in the output calculating the sum of all values of the Conditional Rearrange on all pages up to and excluding the current page. The rearrange is inserted before the Conditional Area enabled for the current page type.

Exercise

Download and import the attached configuration called **18. Calculations** in **Lasetnet Developer 9**. Afterwards, go to the **Forms** section and open the **Sample** form.

1. In the output, switch to the **Last Page** tab.
2. Select the first pattern rearrange of the **Amount** column and edit its **Formats** properties.
3. Select **Amount** in the **Objects** list.
4. Select **Number** as **Format category**.
5. Once you are done, click **Ok**.



6. Repeat the same steps to edit the **Formats** properties for the last pattern rearrange in the **Amount** column.



7. Use the the **Text** tool, to add a fixed text to the footer of the form. Open the **Edit Rearrange** dialog to edit the fixed text object properties.

8. Switch to the **Formats** tab and set **Format category** to **Number**.



9. Switch to the **Objects** tab and set **Object type** to **Script**.

10. Type **Sum(Amount);** in the script field.

11. Once you are done, click **Ok**.



12. In the output, select the rearrange specified as **[script]** you have just added.

13. Set **Font Size** to **18 pt**.

14. Set the **X** position to **196 mm** and **Y** to **280 mm**.

15. Set **Font** style to **Bold**.

16. Align the object right.



17. Select the object, right-click it, and then set the **Absolute** position to **Last** and **Single**.

Price	Amount
32.70	
5.80	
1.00	
649.40	
125.10	
1.889.20	

- Merge output
- Detach all
- Copy
- Cut
- Paste
- Delete
- Align
- Spacing...
- Absolute**
 - First
 - Middle
 - Last
 - Single
 - All
- Order
- New Subform...
- New Style from selection...
- General
- Objects
- Criteria
- Fonts
- Formats
- Position
- Border
- Lock

18. To view the result of the calculation for the Amount column, press **Shift+F5**. Otherwise,

on the Menu bar click **View**, and then click **Run JavaScript**.

Lasernet
by Formpipe

Sparrow Wholesales
123 Purple Road
Arvada, CO 80005
United States of America

Sample
Number.....: 123456
Date.....: 20-11-2014
Account.....: 1201
Reference.....: John Doe
Page.....: 3 / 3

Article	Description	Quantity	Price	Amount
	Transfer from previous page			56.626,18
80203	Graphic Card 9400	10	6,80	68,00
80204	Ultra 160M SCSI Controller	10	6,80	68,00
80209	20/48x IDE CD ROM	5	17,50	87,50
80210	8x/4x/32x IDE CD Read-Write	5	32,70	163,50
80211	Quietkey Keyboard	25	5,80	145,00
80220	Screw on Mount CD/Tape Driv	2.500	1,00	2.500,00
1898-S	ATHENS Desk	1	(5%) 649,40	616,93
1900-S	PARIS Guest Chair, black	1	(5%) 125,10	118,84
	Freight	1	1.889,20	1.889,20
Total				62.283,15

Lasernet by Formpipe

Following the steps above, you have added the sum to the Amount column at the bottom of the last and single pages by manually setting the parameters. Besides, you can use the **Calculation** tool to automatically add such parameters as object names and number formatting to the selected rearranges.

Now proceed with the steps listed below to add subtotals.

19. In the output, switch to the **First Page** tab.

20. Select the **Amount** rearrange.

21. On the toolbar, click **Calculation** and select **Subtotal CurrentPage**.



Change the **End Y** position to **275 mm** on the **First Page** and the **Middle Page**. The **[script]** calculation is now positioned inside the box.

The **SumSubtotal(Amount)** system script used to calculate the subtotals for the Amount column on the **First Page** is added with a unique **Object name** to the bottom of the Conditional Area. The **Format category** property is set to **Number**.



The **Calculation** tool has added the required parameters to the **Objects** settings. The **Relative to** property of the subtotal is set to **Bottom of the Conditional Area** with an **Y-pos** set to **4.5 mm** (default value).

In addition, set the following properties of the subtotal:

22. Specify **5.5 mm** for the **Y** position.
23. Set the **Absolute** position to **First** and **Middle**.
24. Once you are done, click **Ok**.
25. Afterwards, set the **Font** style to **Bold**.



26. Add a new fixed text rearrange, change its label to **Transfer to next page**. Afterwards, set the **Font** style to **Bold**.

27. Edit the position properties of the rearrange by setting **Relative to** to **Bottom of cond. area(Absolute)**.

28. Set **Absolute** position for **First** and **Middle** pages by selecting the corresponding check boxes.

29. Set the **X** position to **42 mm**.
30. Set the **Y** position to **5.5 mm**.
31. Once you are done, click **Ok**.



32. In the output, switch to the **Middle Page** tab.

33. Select a rearrange in the **Amount** column.

34. On the Developer toolbar, click **Calculation**, and then click **Subtotal PreviousPage**.

Sample - Lasernet Form Editor 9

File Edit Form Sheet Tools View Help

Save Preview Cut Copy Paste Undo Redo Styles Format Painter Guides Output zoom: 65%

Font: Arial Size: 10 X: 195.0 mm Y: 0.0 mm B I U

Sample.xml Sample (Multiple Pages).xml x

Criterion Rearrange

Calculation: Add Subtract Multiply Divide Sum Subtotal CurrentPage Subtotal PreviousPage Sum Group Sum Region

Image

Text

Shape

Table

JobInfo

Dynamic Region

Pattern

Sheet 1

Sample (Multiple Pages).xml Ln 1, Col 1 X 19.6 mm, Y 293.8 mm

Lasernet by Formpipe

Sparrow Wholesales
123 Purple Road
Aneda, CO 80005
United States of America

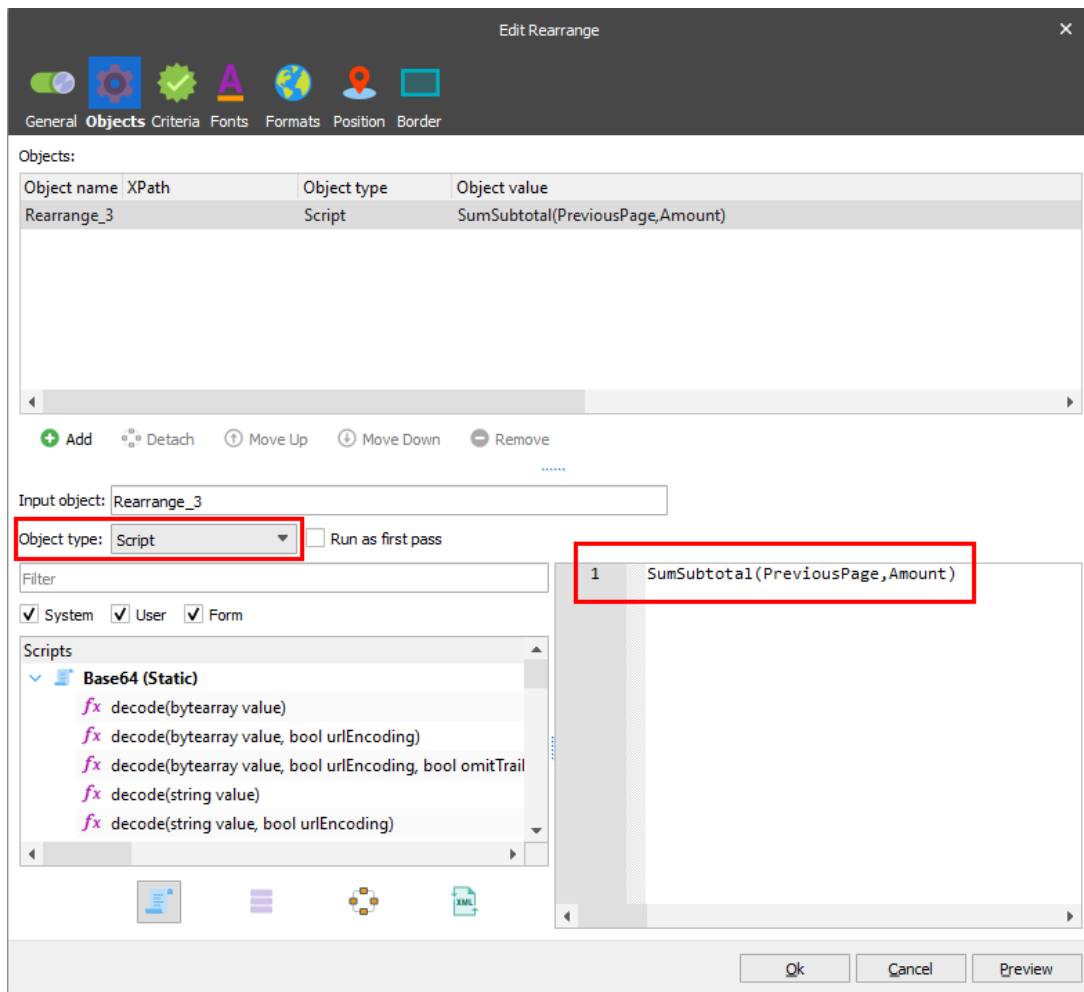
Sample
Number: 123456
Date: 20-11-2014
Account: 1201
Reference: John Doe
Page: [Page X of Y: %1 / %2]

Article	Description	Quantity	Price	Amount
	Transfer from previous page a long wheelbase (for ride comfort and to avoid pedal-to-licence contact), frame materials that favor flexibility over rigidity (for ride comfort), heavy duty wheels (for load capacity), and multiple mounting points (for luggage racks, fenders, and sports cages).			[script]
1100	Front Wheel	2 (15%)	1,000.00	2,000.00
1110	Rim	2 (15%)	10.00	20.00
1120	Spokes	2 (20%)	150.00	300.00
1150	Front Hub	2 (15%)	500.00	1,000.00
1151	Axle Front Wheel	1 (20%)	800.00	800.00
1155	Socket Front	1 (20%)	150.00	150.00
1160	Tire	1 (20%)	80.00	80.00
1170	Tube	10 (20%)	10.00	100.00
1200	Back Wheel	1 (15%)	1,200.00	1,200.00
1250	Back Hub	1 (15%)	1,100.00	1,100.00
1251	Axle Back Wheel	1 (20%)	800.00	800.00
1255	Socket Back	1 (20%)	10.00	10.00
1300	Chain Assy	2 (15%)	800.00	1,600.00
1310	Chain	2 (15%)	150.00	300.00
1500	Lamp	2 (20%)	150.00	300.00
1700	Brake	2 (15%)	800.00	1,600.00
1710	Hand rear wheel Brake	5 (15%)	120.00	600.00
1720	Hand front wheel Brake	5 (20%)	120.00	600.00
70100	Paint, black	10	2.70	27.00
80023	27GB ATA-00 IDE	5	25.10	125.50
80024	40GB ATA-00 IDE	5	35.60	178.00
80025	3GB Ultra 160M SCSI	2	18.10	36.20
80026	1GB Ultra 160M SCSI	1	20.40	20.40
80027	3GB Ultra 160M SCSI	1	34.90	34.90
80100	Printing Paper	150 (5%)	1.14	171.00
80202	Chip, 32 MB	12	5.90	70.80
	Transfer to next page			[script]

Lasernet by Formpipe

First Page Middle Page Last Page Single Page

The **SumSubtotal(PreviousPage, Amount)** system script used for calculating subtotals for the previous page is added to the top of the Conditional Area.



35. Set the **Start Y** position on the **Middle** and **Last** pages to **115 mm**. To this end, drag the dotted line to the required position.



36. On the **Position** tab, set the **Y** position to **-3 mm**.

37. Set the **Absolute** subtotal position for the **Middle** and **Last** pages by selecting the corresponding check boxes.

38. Once you are done, click **Ok**.

39. Afterwards, use the Property bar to set the **Font** style to **Bold**.



40. Add the **Transfer from previous page** fixed text object.

41. Edit the object properties by setting **Relative to** to **Top of cond. area**.

42. Then set the **Absolute** position for the **Middle** and **Last** pages.

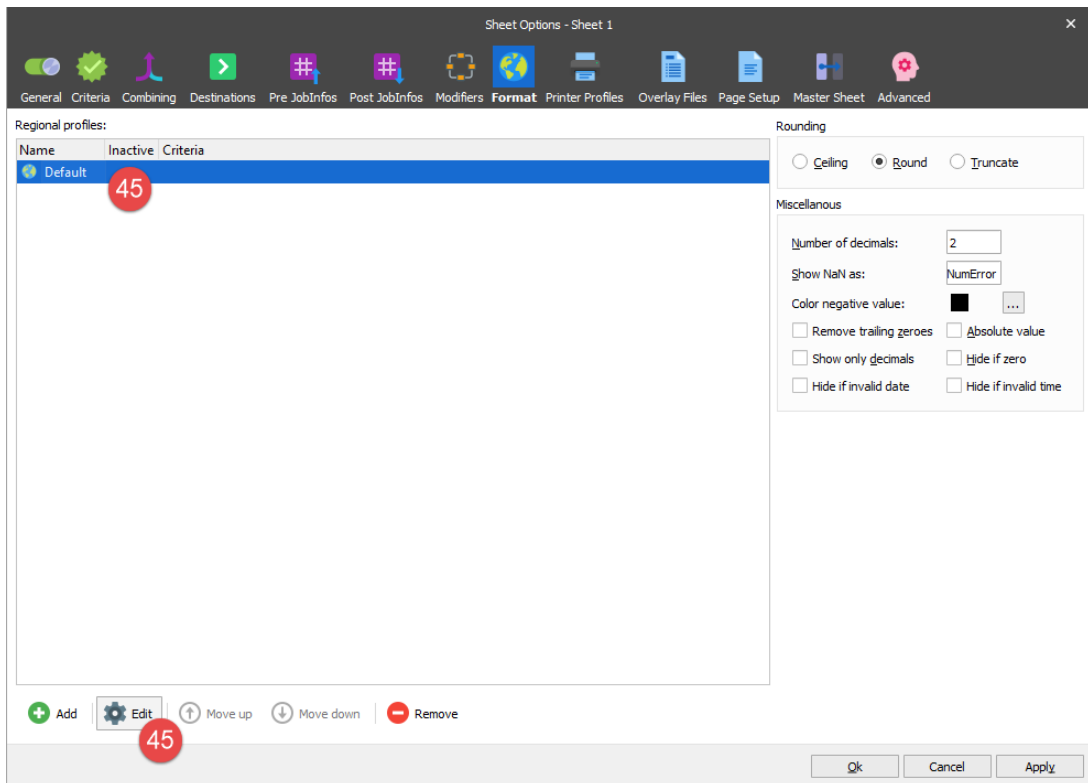
43. Afterwards, use the Property bar to set the **Font** style to **Bold**, the **X** position to **42 mm** and **Y** to **-3 mm**.



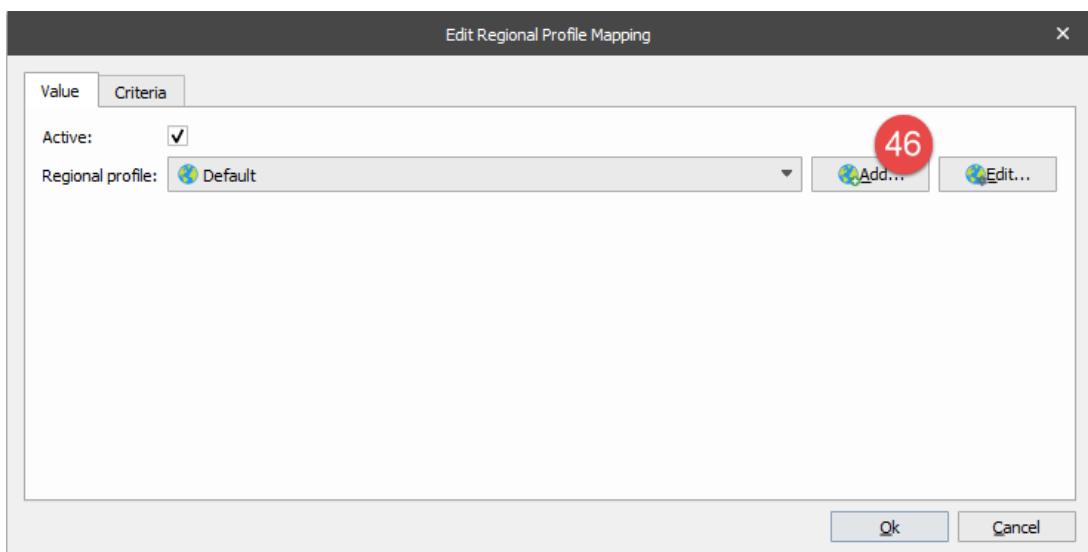
Validate calculated sums by clicking **View** on the Menu bar, and then clicking **Run JavaScript**, or press **Shift +F5**.

44. On the Menu bar, click **Sheet**, and then click **Sheet Options**. Switch to the **Format** tab.

45. Select the **Default** profile and click the **Edit** button to replace the current profile with a another one.



46. In the **Edit Regional Profile Mapping** dialog, click **Add...** to add a new regional profile



47. Type a name (**US**) of a new regional profile.
48. Click the **Import** button.
49. In the dialog box displayed, select **English (United States)** as the default regional profile.
50. Click **Ok** to import the regional profile.
51. Afterwards, click **Ok** on every dialog to include in the regional profile to the list.



52. On the **Sheet Options** dialog, click **Ok** to accept the regional profile you have just added.



Decimal and digit grouping have changed to a new regional format for the rearranges which have **Format category** set to **Number**. You can also apply a definite regional profile to a specific rearrange which overrules the general settings defined for this particular sheet.



53. Select rearranges in the **Quantity** column to edit their properties. Open the **Edit Rearrange** dialog and switch to the **Formats** tab.
54. Set **Number** as **Format category**.
55. Switch to the **Output format** tab and select the **Override sheet output format** check box.
56. Select the regional profile in the list, click to replace it with the **US** regional profile.
57. Set **0** as a **Number of decimals** value.
58. Click **Ok** to accept changes.

Copy of Sample - Lasetnet Form Editor 9

File Edit Form Sheet Tools View Help

Save Preview Cut Copy Paste Undo Redo Styles Format Painter Guides Output zoom: 65%

Font: Arial Size: 10 X: 128.0 mm Y: 0.0 mm

Sample.xml Sample (Multiple Pages).xml x

Edit Rearrange

General Objects Criteria Fonts Formats Position Border

Objects:

Object name	XPath	Format category	Input format	Output format
Quantity		Number		Number

Format category: Number (54) Hyperlink Newline Trim spaces

Hyperlink: Active Before After Replace with space Before After End of Line

Input format: Number (55) Hyperlink

Override sheet output format

Regional profiles:

Name	Inactive	Criteria
US (56)		

Rounding: Ceiling Round (57) Truncate

Miscellaneous:

Number of decimals: 0 (57) Show NaN as: NumError

Remove trailing zeroes Show only decimals Absolute value Hide if zero

Ok (58) Cancel Preview

Sheet 1 First Page Middle Page Last Page Single Page

Sample (Multiple Pages).xml Ln 1, Col 1 X: 126.5 mm, Y: 152.3 mm

Lasernet by Formpipe

Sample

Number: 123456
Date: 20-11-2014
Account: 1234
Reference: John Doe
Page: 2 / 3

Quantity	Price	Amount
(15%) 10.000	1.700,00	
(20%) 10.000	17,00	
(15%) 500,00	800,00	
(20%) 800,00	400,00	
(20%) 150,00	120,00	
(20%) 80,00	48,00	
(20%) 10,00	80,00	
(15%) 1.100,00	938,00	
(20%) 800,00	400,00	
(15%) 1.200,00	1.020,00	
(15%) 800,00	1.300,00	
(15%) 150,00	235,00	
(15%) 800,00	1.020,00	
(15%) 800,00	1.020,00	
(15%) 120,00	510,00	
(20%) 120,00	480,00	
	40,50	
	25,10	102,63
	35,80	178,00
	18,10	30,20
	20,40	20,40
	34,90	34,90
(5%) 1,14	102,45	
	5,30	

You have now managed to change the number format for a specific rearrange.



Attachments

- [18.-Calculations.Inconfigx \(609.03 KB\)](#)