

## Add New Form with Criteria

Alex Pearce - 2024-07-15 - Comments (0) - Lasetnet Form Editor 9 - Designing Forms

# Lasetnet

In this exercise, you can learn how to add a new form and design a report by using XML as input data. You are also to set up the required criterion/criteria to recognize the form.

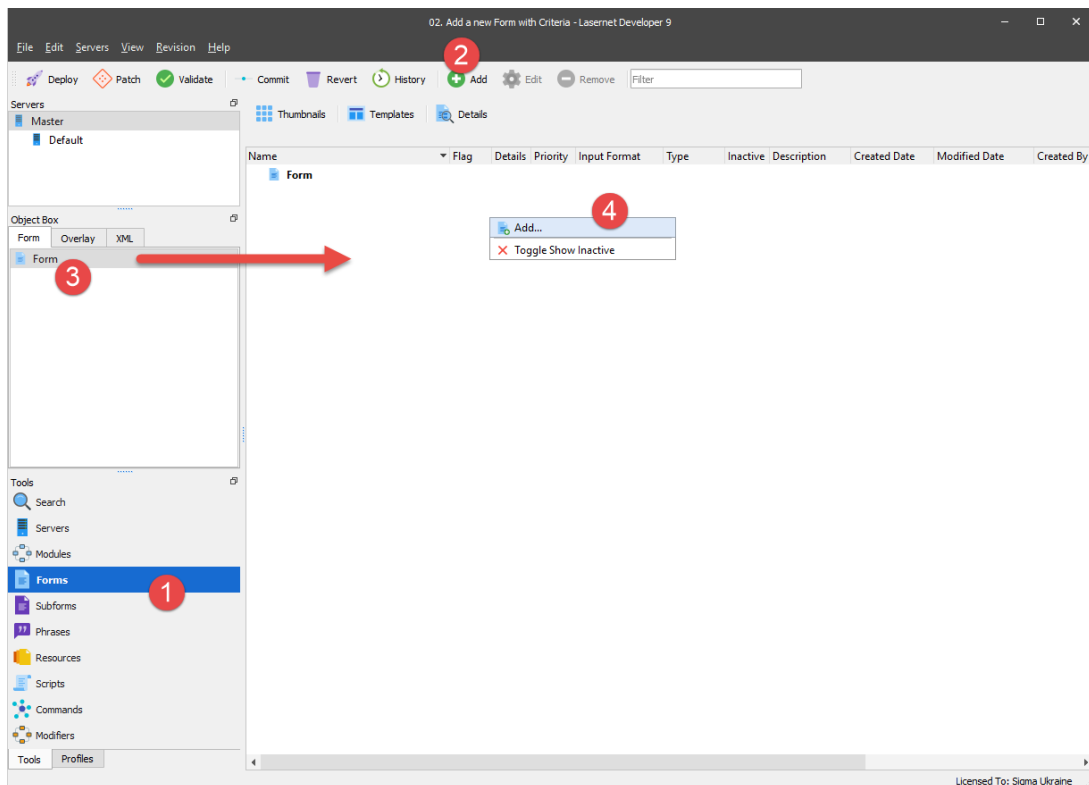
The form criterion is used by the Form Engine to look for the key data in specific locations in the input data and recognize a form in the form list.

If no criteria are specified for a form, such a form is not processed.

### Exercise

Download and import the attached configuration called **02. Add New Form with Criteria** in **Lasetnet Developer 9**. Afterwards, follow the steps listed below:.

1. On the **Tools** panel, click **Forms** to open a form area.
2. Click the **Add** button on the top toolbar.
3. Otherwise, you can drag the **Form** item to the form area.
4. As one more alternative, you can right-click in the form area, and then click **Add** in the context menu that appears.



5. Enter a name of the new form in the **Name** field.
6. Select **XML** as an input format.
7. Select **EMF** as an output format. Once you are done, click **Ok** to confirm changes.

Form Properties

General

Name: **5** Sample

Form Type: [ ]

Description: Optional

Flag: Default

Priority: 0 [ ] Edit

Input Format: **6** XML

Output Format: **7** EMF

Modified by: [ ]

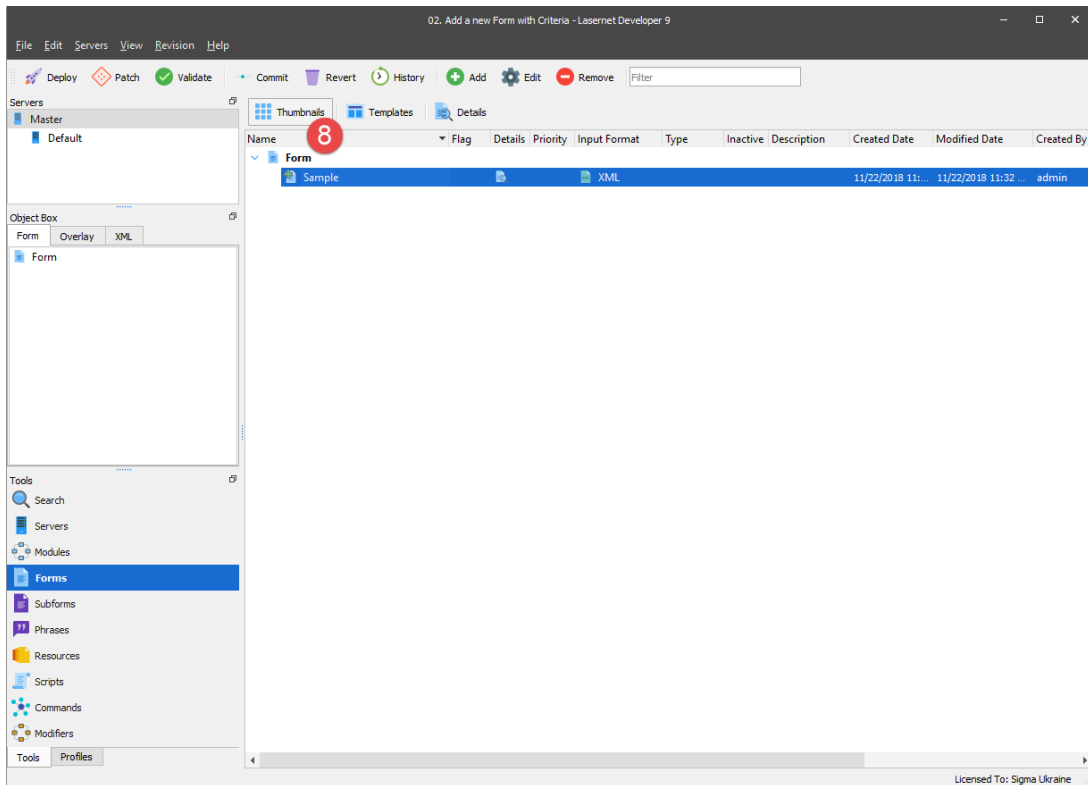
Keywords:

Key	Value
-----	-------

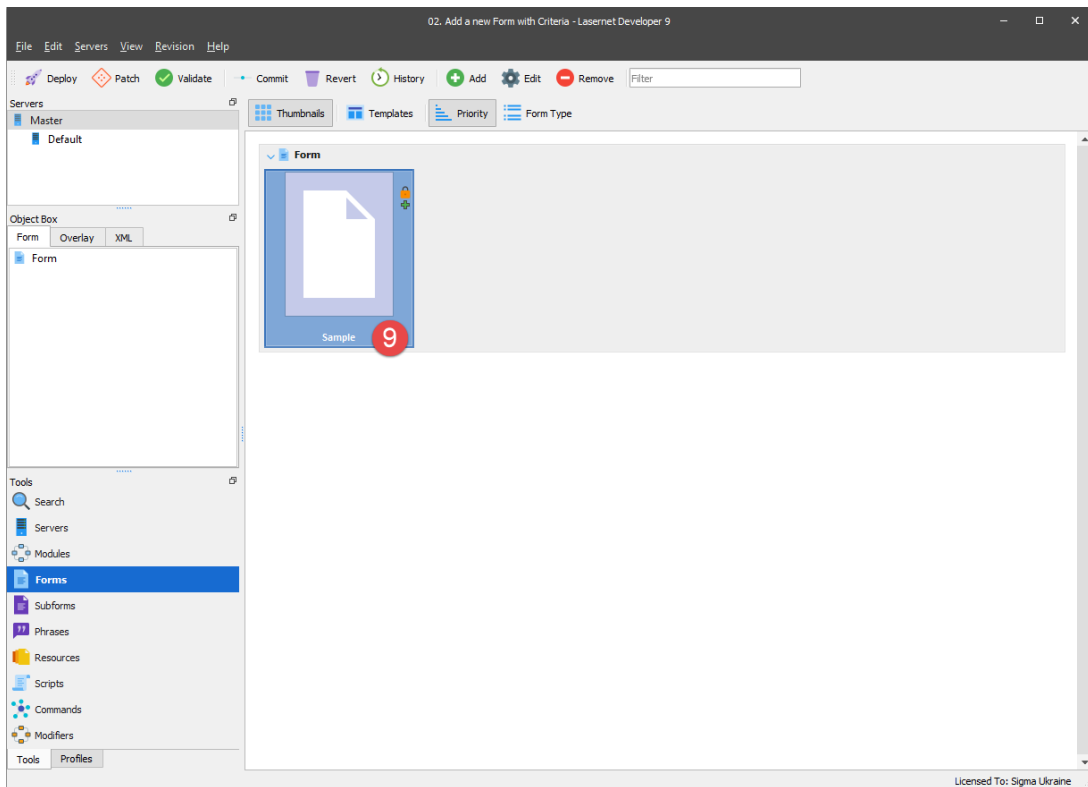
+ Add - Remove

Ok Cancel

8. Click the **Thumbnails** button to toggle viewing thumbnails or a list of forms.

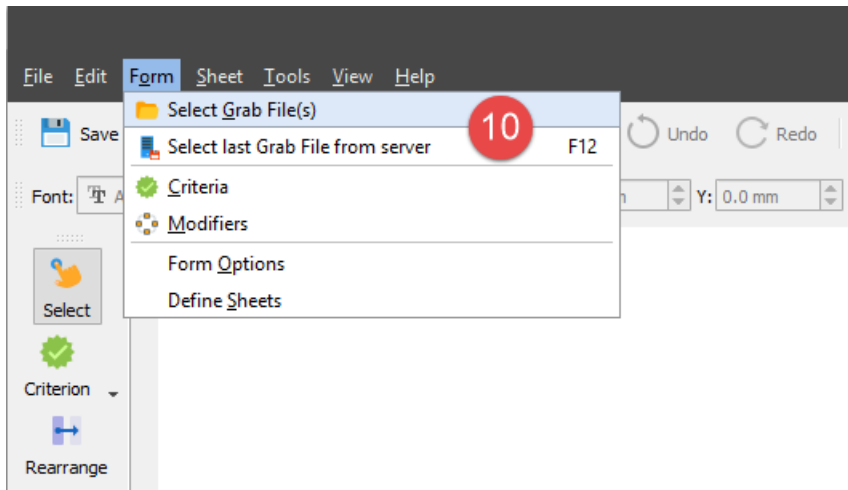


9. Double-click the form named **Sample** to enter the design mode.



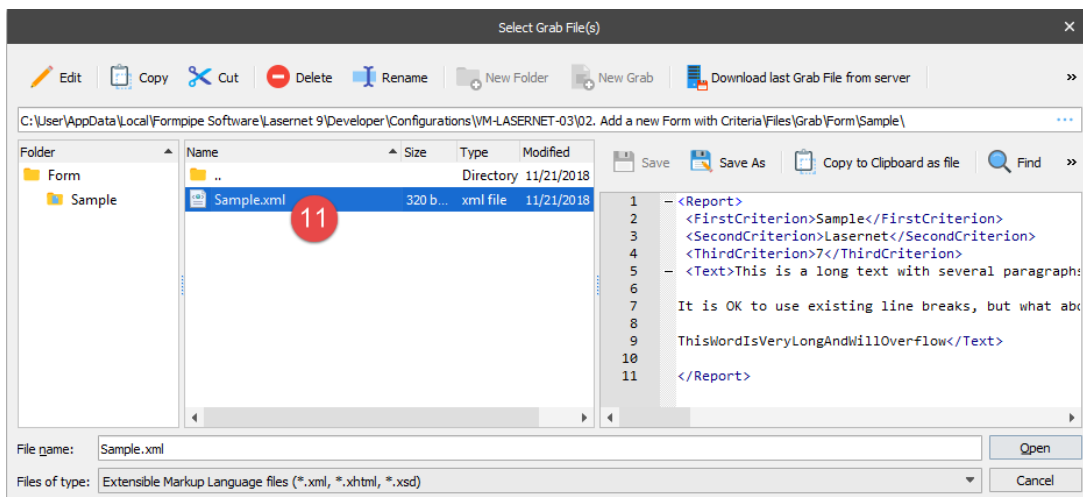
Before you can set up a new form, you are to open a grab file which shows in the input view window of **Liferay Form Editor**. A grab file contains the output data as delivered from the application for which you want to create a report.

10. On the **Form** menu, click **Select Grab File(s)**.



Browse for the directory on your computer where the relevant grab file is located. This is most likely the **Grab** subdirectory of your configuration.

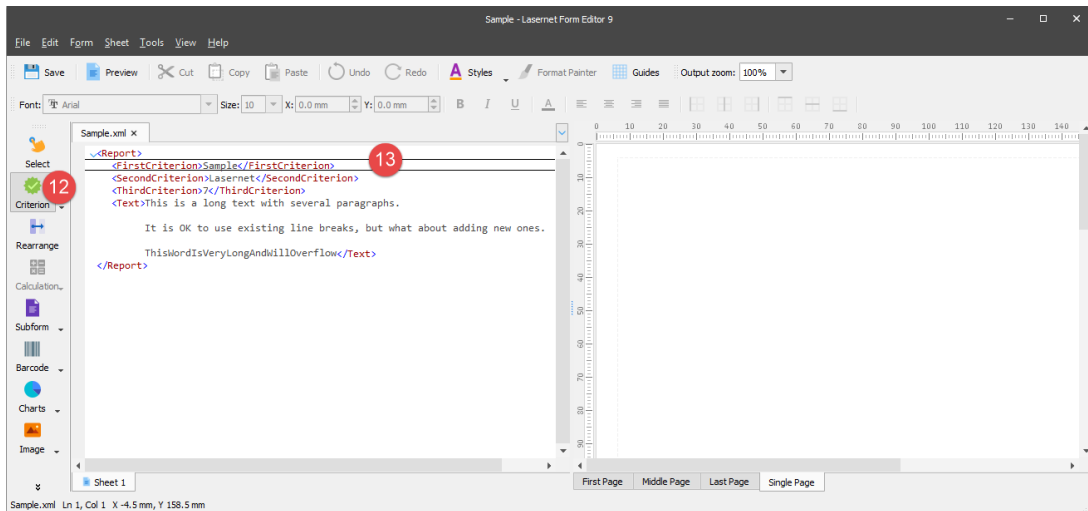
11. Select the **Sample.xml** file located in the **Sample** folder, and then click **Open**.



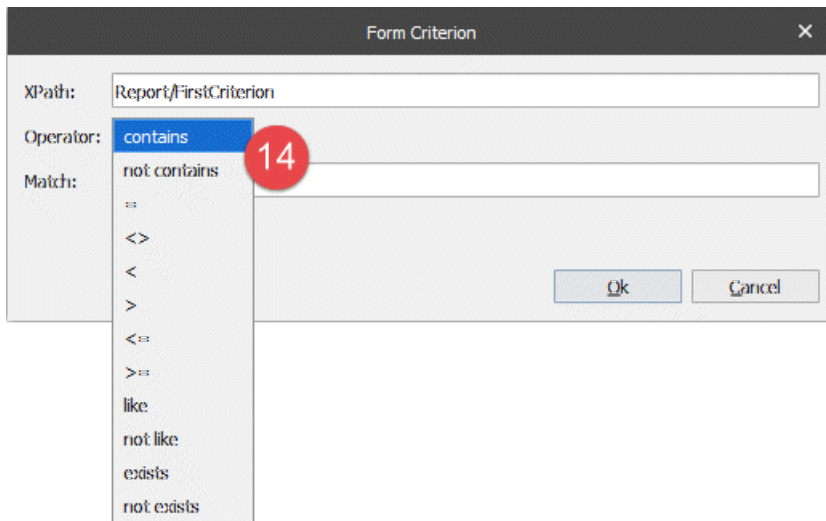
You can set up a criterion in the input of Lاسernet Form Editor by using the **Criterion** tool and selecting an XPath. You can also manually add a criterion with the help of the **Criteria** dialog. You can access this function by clicking **Criteria** on the **Form** menu.

12. On the Developer toolbar, select the **Criterion** tool to set up the first criterion. You can use one or several criteria, so the Form Engine can recognize and process a form.

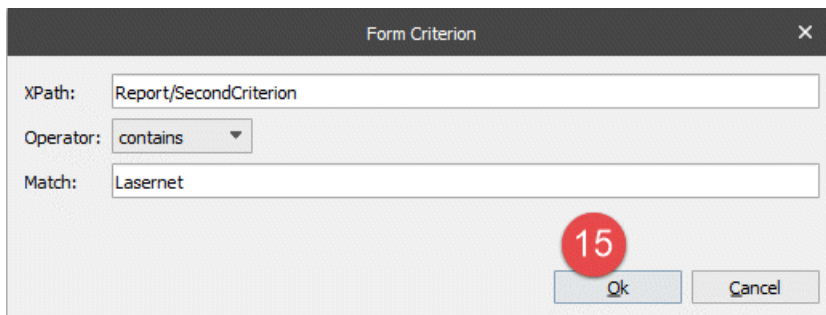
13. Move the cursor to the **<FirstCriterion>** element and select the element itself or its value.



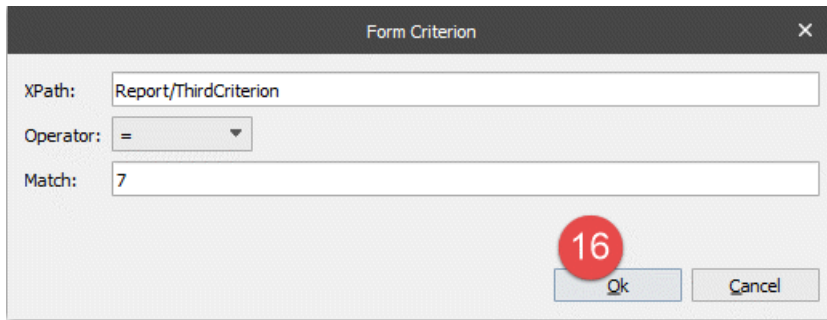
14. Accept the default settings for selected XPath which is **Report/FirstCriterion** as well as the match value which is **Sample**. From the **Operators** drop-down box, you can select an operator needed to match a value. In this example, the **contains** operator is used.



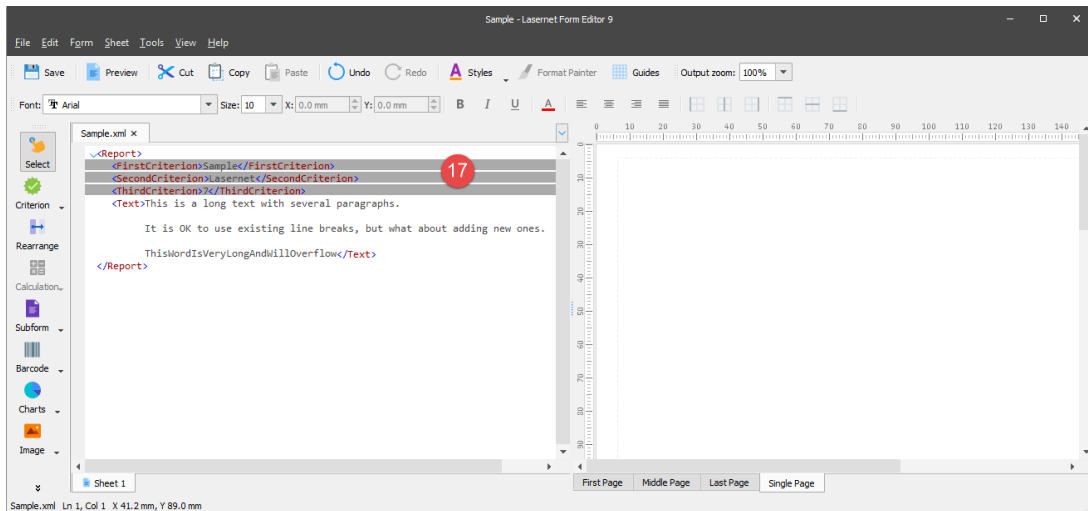
15. Repeat step 10 - 12. Select **<SecondCriterion>** which **contains** the **Lasernet** value.



16. Repeat step 10 - 12. Select **<ThirdCriterion>** and set the **equal** operator to match the **7** value.



17. The input view shows three objects which are dark-grey highlighted illustrating that the form contains three criteria to recognize the XML data.



18. To edit the criteria, on the **Form** menu, click **Criteria**. Each criterion has name defined by a letter which is used for a form expression. You can manually add new form criteria, edit the existing list, or manipulating items available in the list by moving each up/down. Ensure that the form expressions are listed in the expected order after moving a criterion up or down.

18
Criteria
✕

✔
Form

Criteria master form:

Inherited criteria:

Name	JobInfo	XPath	Operator	Case	Match	Master form

Form expression:

Form criteria:

Name	JobInfo	XPath	Operator	Case	Match
A		Report/FirstCriterion	contains		Sample
B		Report/SecondCriterion	contains		Lasernet
C		Report/ThirdCriterion	=		7

Form expression:

+ Add Form
 + Add JobInfo
 ⚙ Edit
 ⬆ Move Up
 ⬇ Move Down
 - Remove

## Attachments

- [02.-Add-New-Form-with-Criteria.Inconfigx \(8.47 KB\)](#)