

Database Creation

Sam Menown - 2022-08-04 - Comments (0) - Autoform DM General Information

Autoform DM

This article shows you how to create a new Database along with a user with the appropriate roles required for Autoform DM and Microsoft SQL Server.

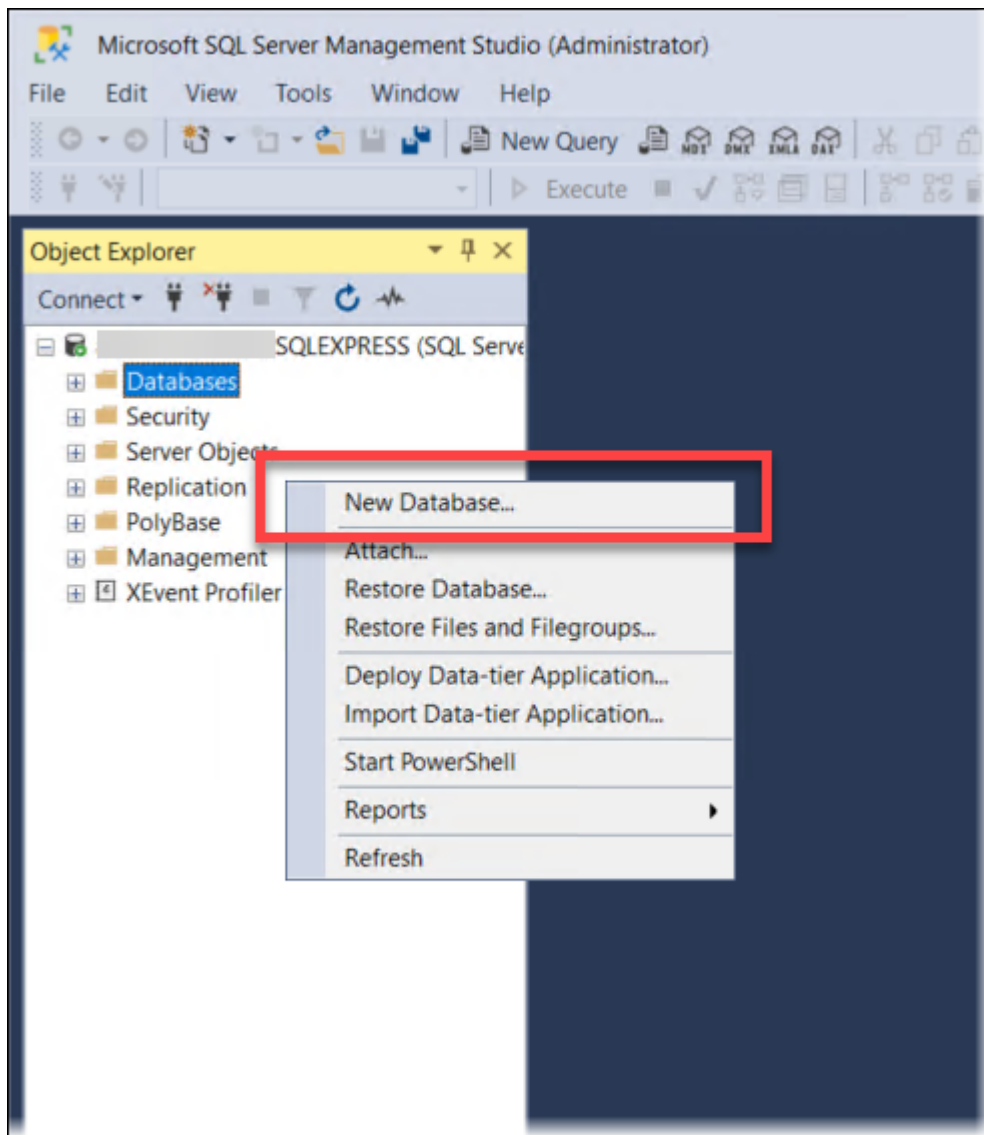
If you're using Microsoft SQL Server, it should already be running and connected to the server using Management Studio with an account that can create Databases and Users.

Microsoft SQL Server

Creating the database

To create the database, follow these steps:

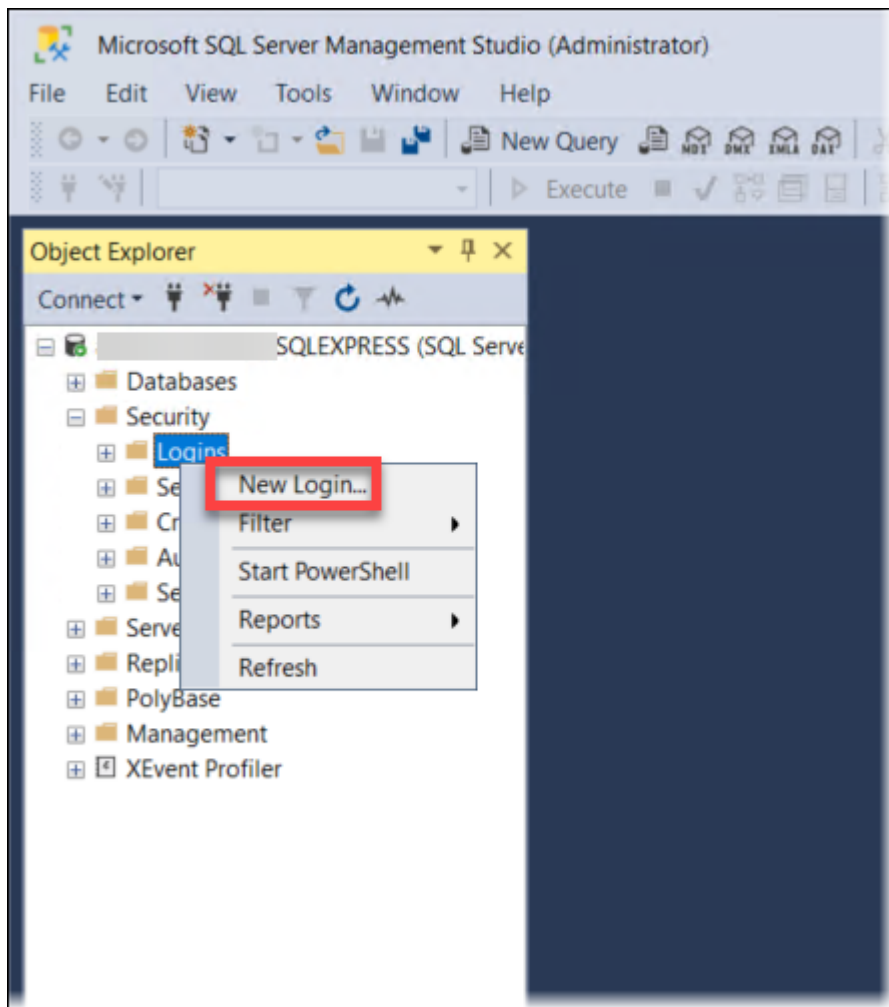
1. Open Microsoft SQL Server Management Studio.
2. Once connected, right-click **Databases** and choose **New Database...**



3. Give the database a name, the default is AFPDM for Autoform DM server Installation.

Creating an account

1. Open **Security** and navigate to the **Logins** folder.
2. Right-click **Logins** and select **New Login....**



3. Click the **General** page

General page

Here you should configure the account to use SQL Server authentication. The values assumed by default during installation are:

Login name: pdm

SQL Server authentication: Select the checkbox

Password: pdm

Default database: AFPDM

Login - New

Select a page

- General
- Server Roles
- User Mapping
- Securables
- Status

Script ? Help

Login name: pdm Search...

☐ Windows authentication

☒ SQL Server authentication

Password:

Confirm password:

☐ Specify old password

Old password:

☐ Enforce password policy

☐ Enforce password expiration

☐ User must change password at next login

☐ Mapped to certificate

☐ Mapped to asymmetric key

☐ Map to Credential

Add

Mapped Credentials

Credential	Provider
------------	----------

Remove

Default database: master

Default language: <default>

OK Cancel

Connection

Server: .SQLEXPRESS

Connection:

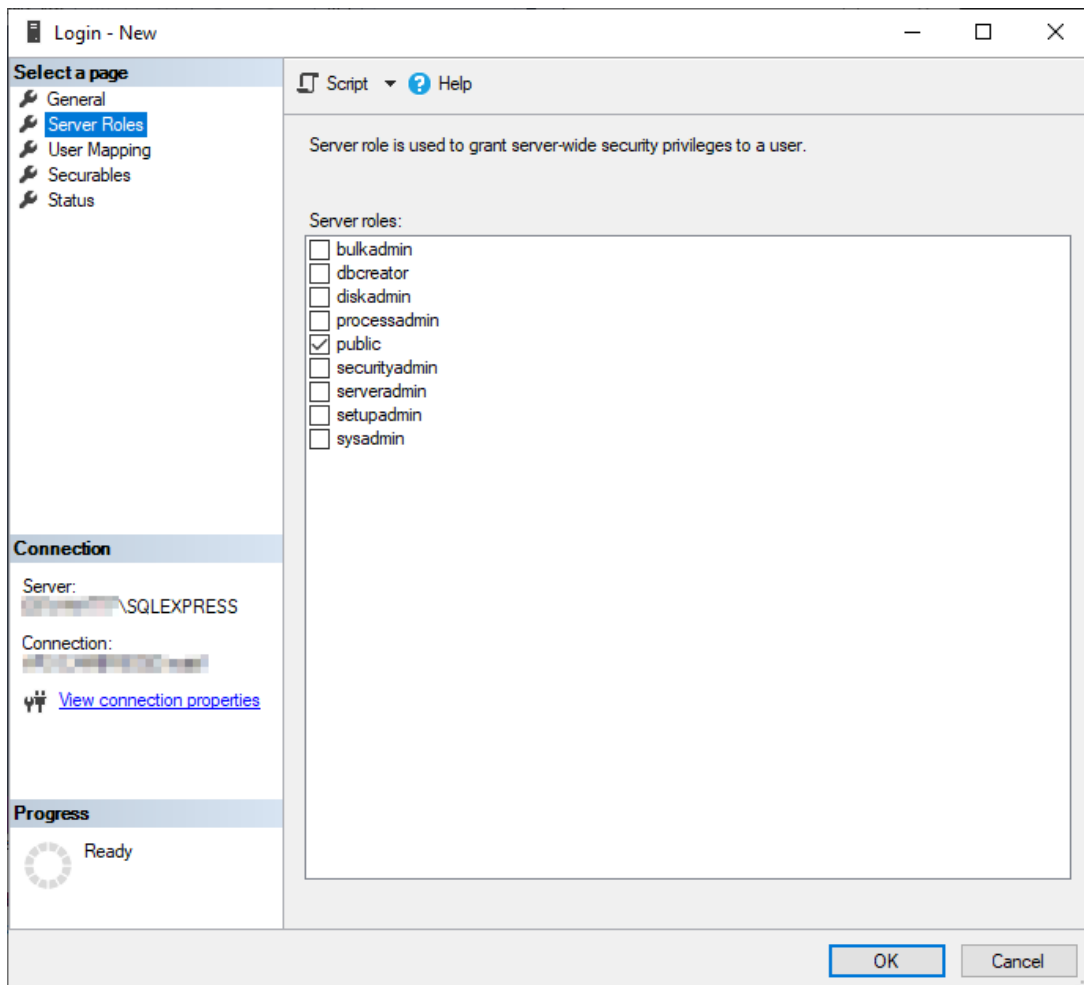
[View connection properties](#)

Progress

Ready

Server Roles

Click the **Server Roles** page and select the **public** checkbox.



User Mapping

1. Select the **User Mapping** page and ensure the **AFPDM** checkbox is selected.

For new installations and upgrades, ensure the following checkboxes are selected:

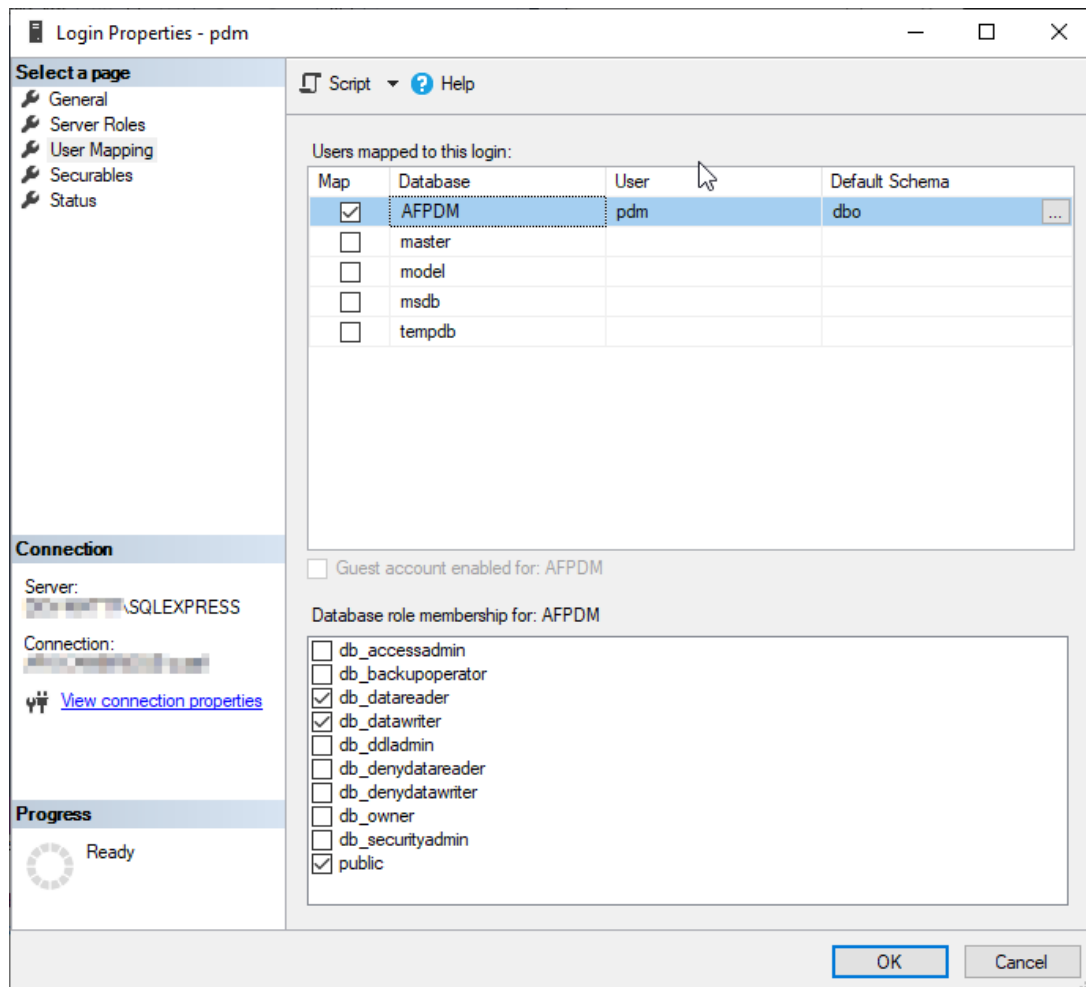
db_ddladmin, (so tables can be created/changed)

db_datareader

db_datawriter

Otherwise (or after an installation/upgrade is completed) only the **db_datareader** and **db_datawriter** checkboxes should be selected.

2. Click **OK** to create the user.



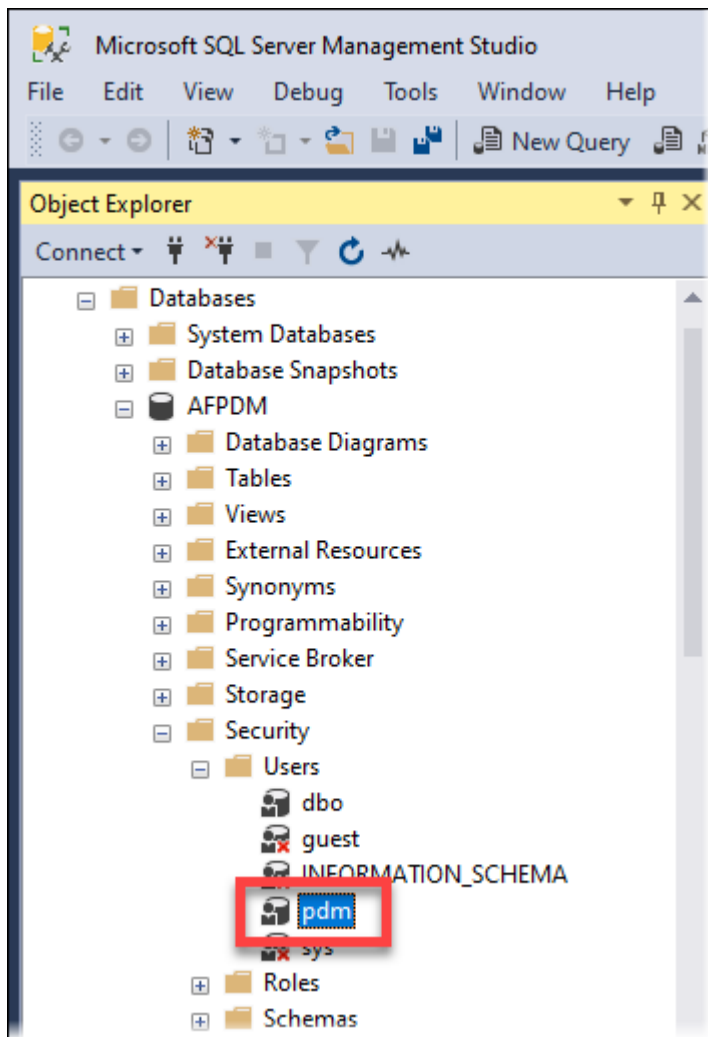
Check User Roles

The final stage is to check that the database has been created correctly. Follow these steps:

1. Navigate to the database in *Server Management Studio*, open **Security** then click **Users**.

There should now be a 'pdm' user in the users for this database.

2. Right-click on this user and select **Properties** in the context menu.



3. Check that the default schema is 'dbo' – this is for a standard setup of Autoform DM Server. Under membership, the user should have the following checkboxes selected:

db_ddladmin, (so tables can be created/changed)

db_datareader

db_datawriter

Otherwise (or after an installation/upgrade is completed) only the **db_datareader** and **db_datawriter** checkboxes should be selected.